



Killearn Road, SE6

£600,000

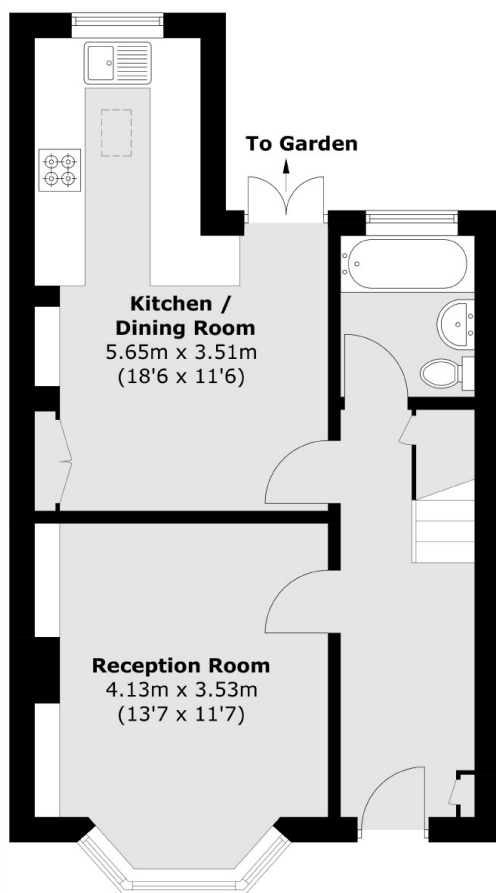
A pretty brick-fronted Victorian house in the heart of the Corbett Estate. There is a characterful bay-fronted reception room, three bedrooms, a well presented kitchen diner with a mature rear garden and fully powered garden room/workshop.

Killearn Road is a sought after residential road in the Corbett Estate moments from Mountsfield Park. Well positioned for both Hither Green and Catford stations, which provides a range of commuter services into Central London.

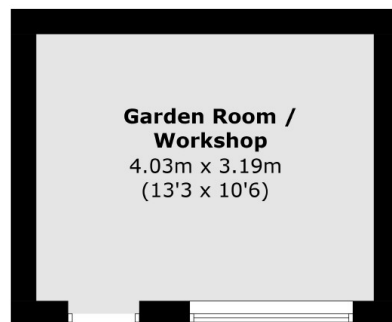
Features

- Victorian
- Well Presented
- Characterful Reception
- Three Bedrooms
- Corbett Estate
- Chain Free

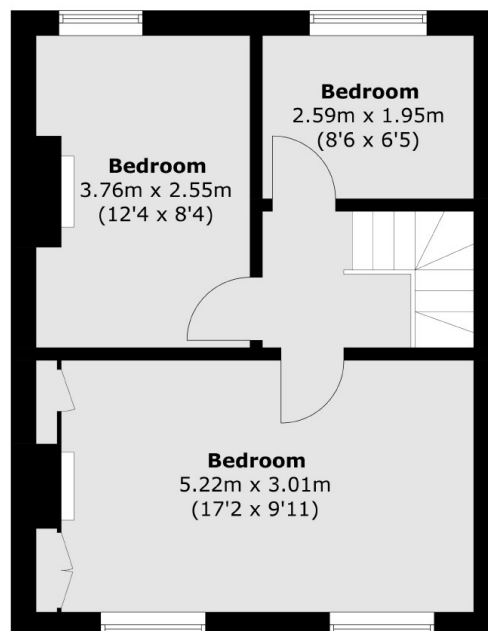
Killearn Road, London, SE6



Ground Floor



(Not Shown In Actual
Location / Orientation)



First Floor

Total area (approx.): 78.5 sq. m (845.0 sq. ft)
Outbuilding area (approx.): 13.0 sq. m (139.9 sq. ft)