



Ladywell Road, SE13

£350,000

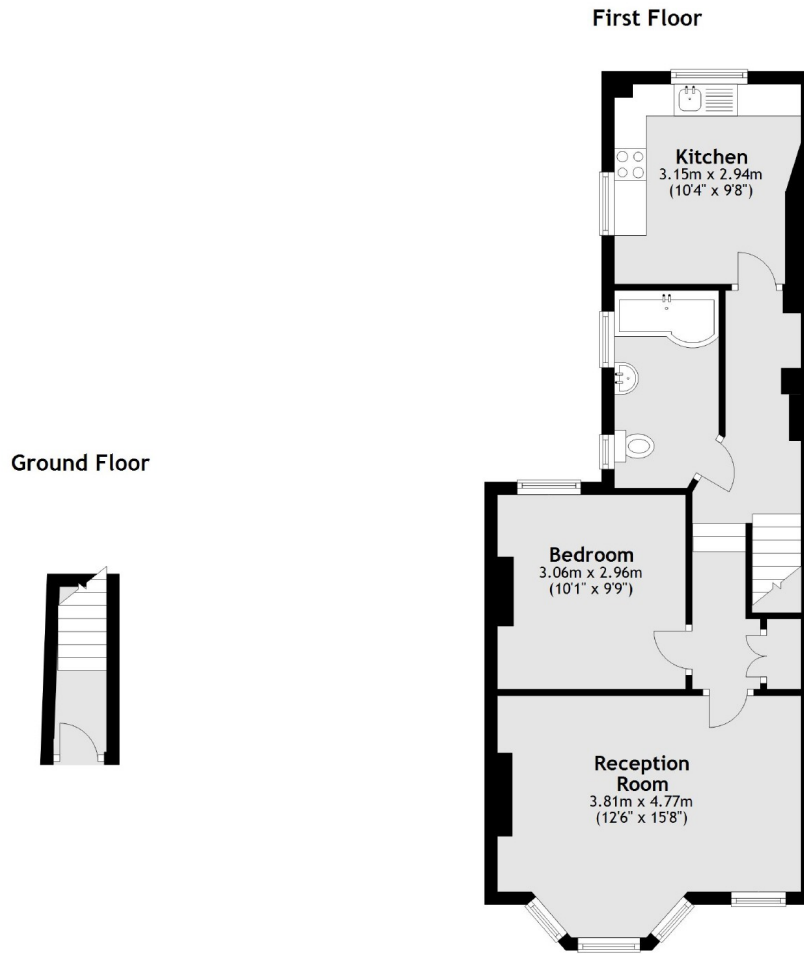
A beautifully finished, bright and spacious one bedroom first floor conversion flat, conveniently located between Ladywell and Crofton Park.

Ladywell Road is a popular road close to the open space of Hilly Fields Park and the amenities of Ladywell Village. Ladywell, Lewisham, Cofton Park and Brockley train stations offer excellent links into the City.

Features

Period Conversion
Over 550 Sq Ft
Hilly Fields Park
Ladywell Village
Close To Transport
Excellent Interior Finish

Ladywell Road, London, SE13



Total area: approx. 52.1 sq. metres (561.3 sq. feet)