



Hither Green Lane, SE13

£495,000

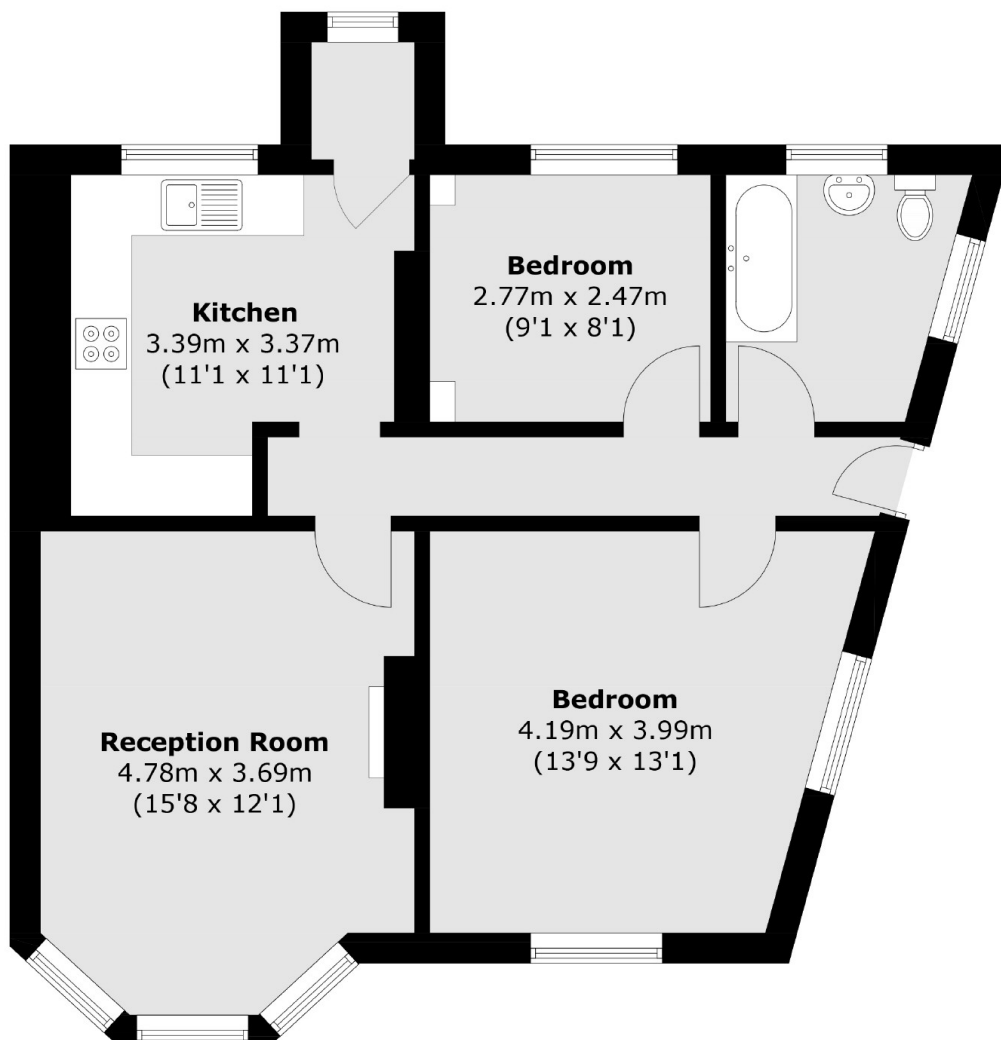
A beautiful two bedroom period converted maisonette, this conversion comes with its own front door, with a side door that grants you access to a well sized private south west facing garden. Internally you are greeted by high ceilings, two double bedrooms, a modern bathroom, and an exceptionally spacious reception area. The property also benefits from double glazing and central heating.

Property benefits from close proximity to local shops, cafés and restaurants. Situated 0.6 miles from Hither Green station and 0.5 miles from Mountsfield Park with open green spaces, tennis courts and bowling green.

Features

- Ground Floor Maisonette
- Two Double Bedrooms
- Large Reception Room
- Double Glazing
- Private Garden
- Easy Reach To Hither Green Station

Hither Green Lane, London, SE13



Total area (approx.): 63.3 sq. m (681.4 sq. ft)