



Halesworth Road, SE13

£400,000

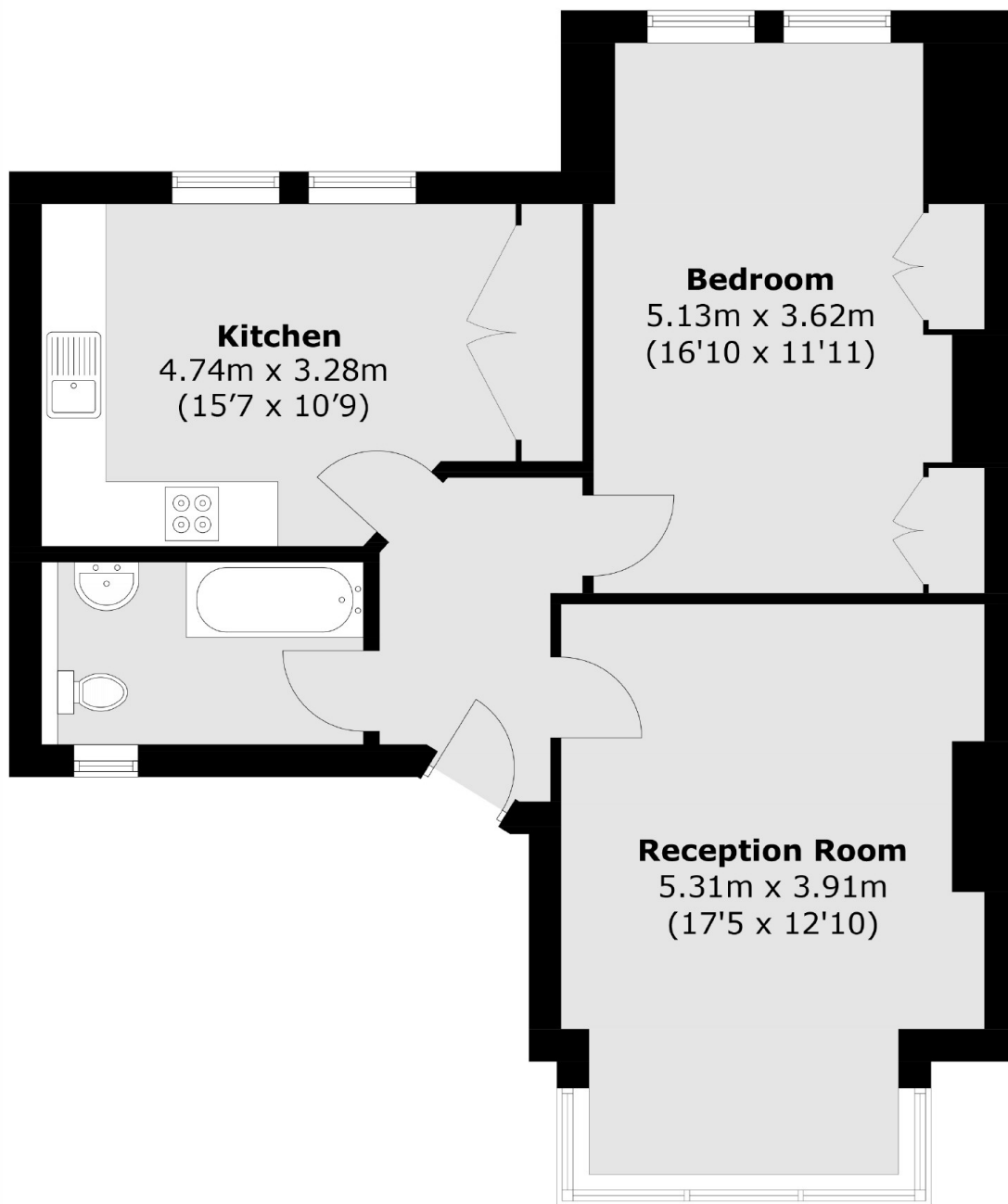
Set on the first floor of an imposing Edwardian house is this perfectly remodelled period conversion. Offering 682 Sq Ft there is a light filled reception room, a generous double bedroom and a beautiful eat-in kitchen sold with a share of the freehold.

Halesworth Road is a lovely residential road located just around the corner from Hilly Fields and between St. Johns, Lewisham and Ladywell train stations giving excellent transport links into London and the city.

Features

- Period Conversion
- Large Double Bedroom
- Large Reception Room
- Eat-In Kitchen
- Share Of Freehold
- Close To Transport

Halesworth Road, London, SE13



First Floor

Total area (approx.): 63.4 sq. m (682.4 sq. ft)