



## Tressillian Road, SE4

£550,000

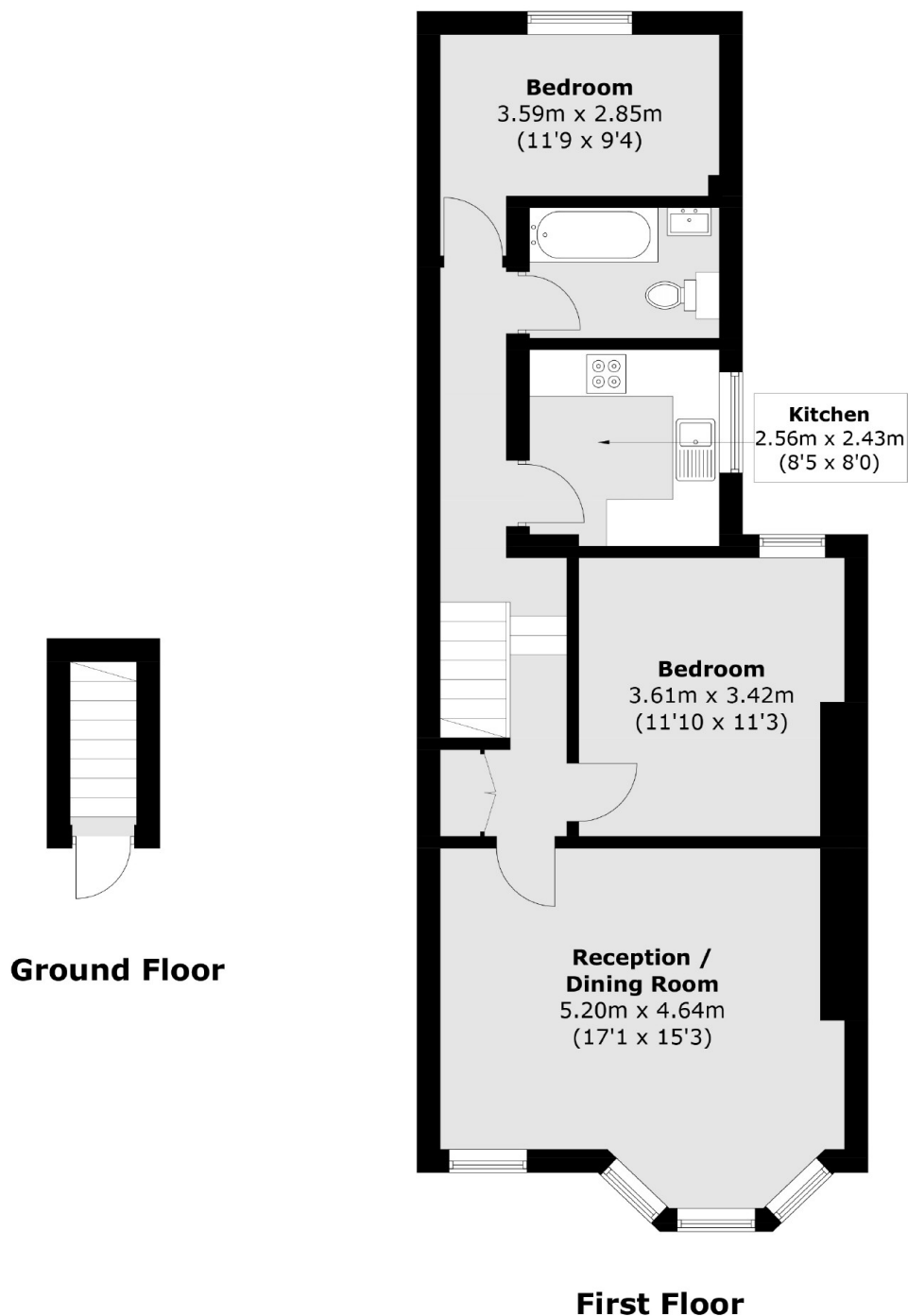
A well presented two bedroom top floor flat set within an imposing period building moments from Hilly Fields in the sought-after Brockley Conservation area.

Tressillian Road is a highly sought after road in the Brockley Conservation area with excellent transport links from Brockley, St. John's and Ladywell train stations.

### Features

Well Presented  
Two Bedrooms  
Large Reception  
Great Transport  
Brockley Conservation  
723 Sq Ft

# Tressillian Road, London, SE4



Total area (approx.): 67.2 sq. m ( 723.3 sq. ft)