



Beecroft Road, SE4

£950,000

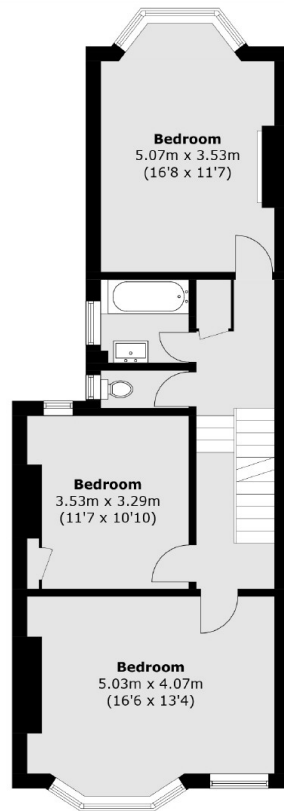
A five double bedroom Victorian terraced house in a sought after position moments from both Crofton Park and Brockley station. There is potential to create a beautiful family home and extend subject to the usual consents.

Beecroft Road is a residential street conveniently located for the cafés, bars and amenities of Brockley Road. Brockley Overground and Crofton Park train stations offer easy access into London and the city.

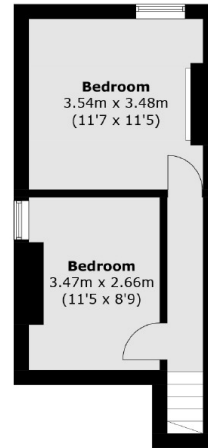
Features

- Five Double Bedrooms
- Two Bathrooms
- Large Rear Garden
- Double Reception
- Modernisation Potential
- Chain Free

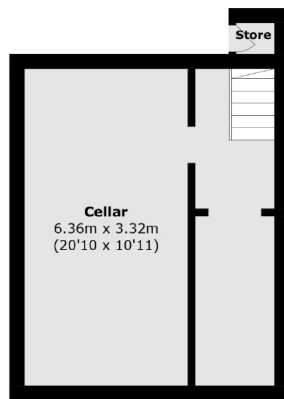
Beecroft Road, London, SE4



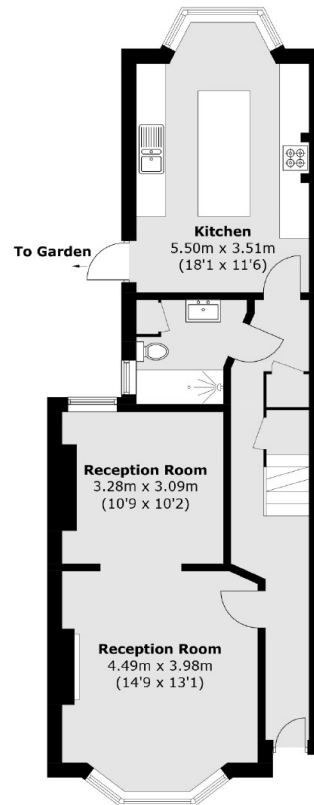
First Floor



Second Floor



Lower Ground Floor



Ground Floor

Total area (approx.): 187.4 sq. m (2,017.2 sq. ft)
(Including Store)