



Overcliff Road, SE13

£1,300,000

Dexters



Overcliff Road, SE13

This impressive Edwardian house has been meticulously renovated throughout with the addition of a loft conversion offering a perfectly framed view of Canary Wharf. Set over four floors and in excess of 1,783 sq ft, there are three double bedrooms, two bathrooms and an open plan kitchen living space leading onto a low maintenance rear garden.

A wide hallway on the ground floor gives access to the bay fronted reception room and rear versatile room. Up to the first floor there is a double bedroom with floor to ceiling wardrobes and second bedroom with original floorboards and fireplace both served by a stylish bathroom. The converted loft occupies the principal bedroom with en-suite shower room and picture frame window with perfect views of Canary Wharf skyline and the Millennium Dome. A bespoke wooden staircase leads down to the living/kitchen area with shelving, bespoke cabinetry and centre island with a frameless glass window seat overlooking the garden. The lower ground floor extension is well zoned for entertaining and living with contemporary exposed brick with slide and pivot doors out to the decked rear garden.

Overcliff Road is a quiet, residential street between Brockley, St Johns and Ladywell Village close to local amenities. St. Johns and Ladywell stations are nearby with Hilly Fields moments away.

Features

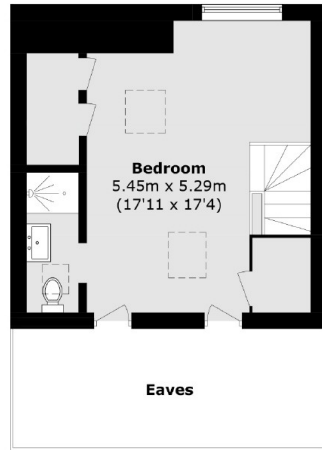
- Edwardian
- Three Bedrooms
- Two Bathrooms
- Fully Renovated
- Loft Conversion
- Dining/Living Extension



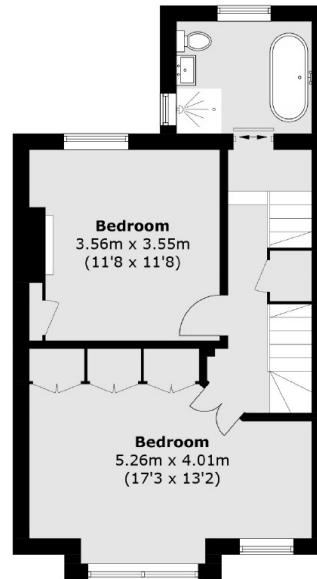




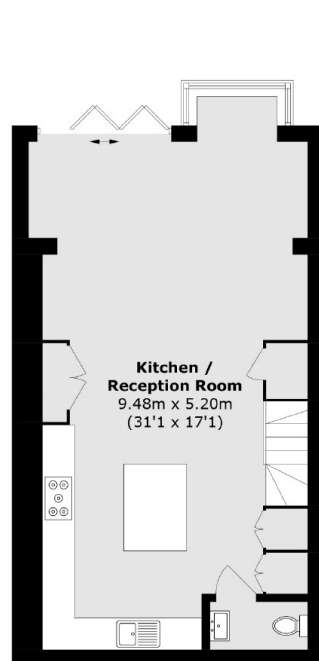
Overcliff Road, London, SE13



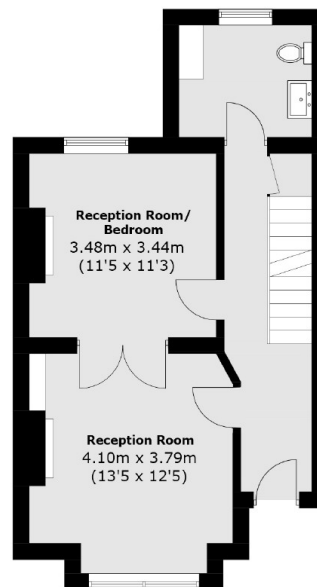
Second Floor



First Floor



Lower Ground Floor



Ground Floor

Total area (approx.): 165.7 sq. m (1,783.5 sq. ft)
(Excluding Eaves)