



Vicars Hill, SE13

£750,000

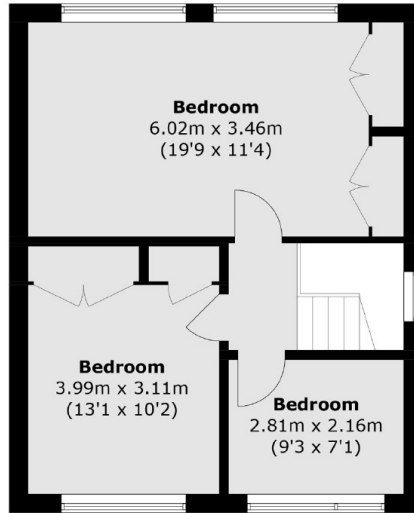
Available for the first time in nearly 70 years is this end of terrace mid-century house next to Hilly Fields and close to Ladywell Village. There are three bedrooms, a spacious reception room and a large mature rear garden with potential for off street parking.

Vicars Hill is a popular road located close to Ladywell Village and Ladywell station and nearby fantastic local amenities. Hilly Fields and Ladywell Fields are also in close proximity.

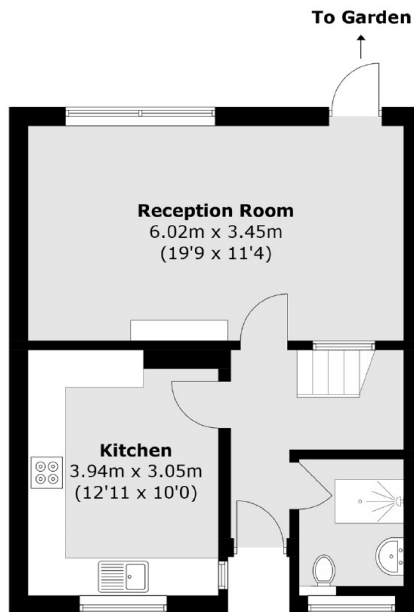
Features

- End Of Terrace
- Three Bedrooms
- Large Reception Room
- Large Rear Garden
- Ladywell Village
- Chain Free

Vicars Hill, London, SE13



First Floor



Ground Floor

Total area (approx.): 90.0 sq. m (968.7 sq. ft)