



## Courthill Road, SE13

### £300,000

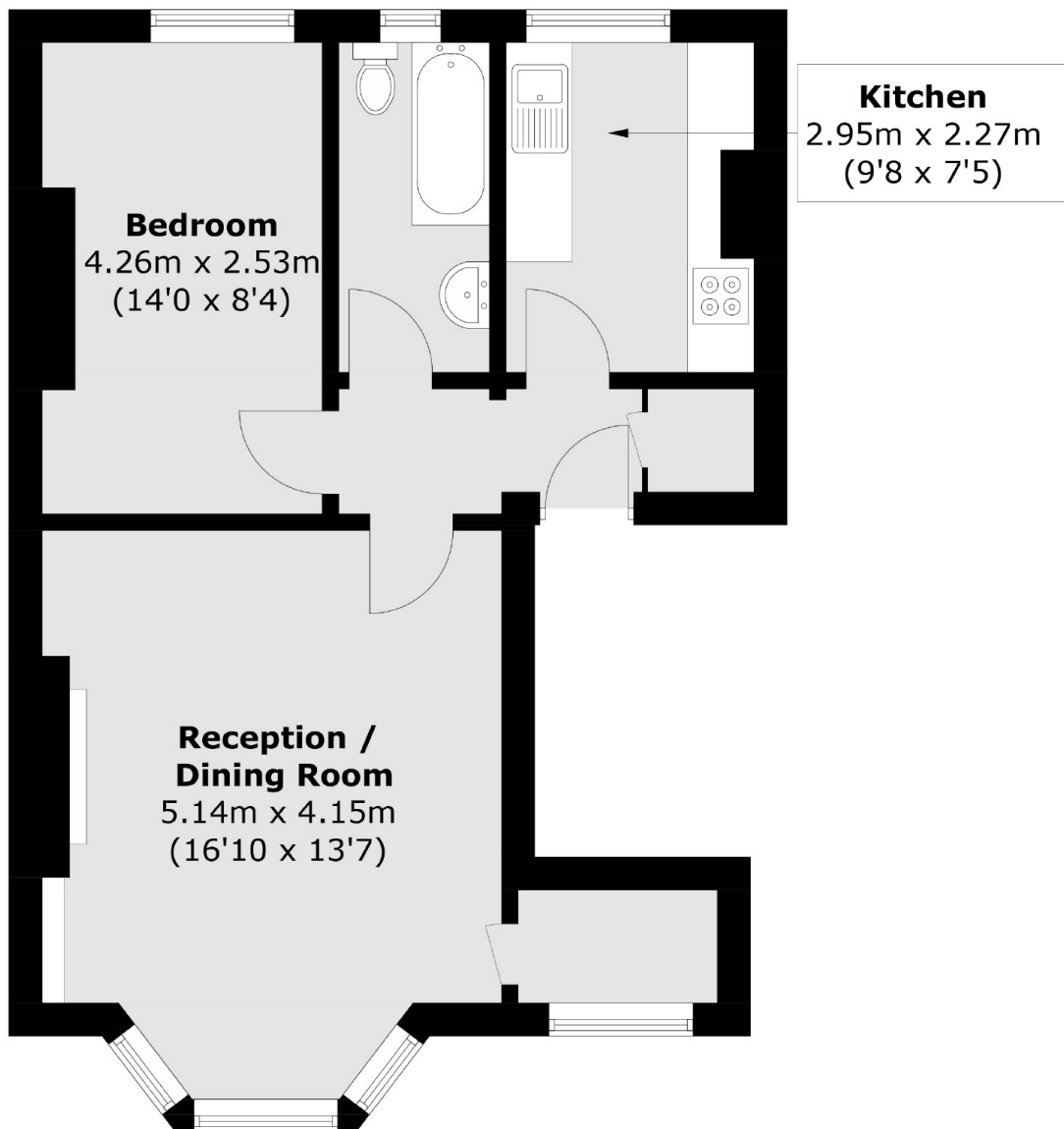
A charming period conversion flat in exacting condition throughout. There is a characterful reception room, a large double bedroom and a remodelled kitchen sold with the benefit of no onward chain.

Courthill road is conveniently located in between Ladywell, Hither Green and Lewisham train stations. The amenities of Lewisham town centre are also within easy reach.

### Features

- Well Presented
- First Floor Flat
- Period Conversion
- Long Lease
- Separate Kitchen
- Chain Free

# Courthill Road, London, SE13



Total area (approx.): 49.1 sq. m (528.5 sq. ft)