



Breakspears Road, SE4

£750,000

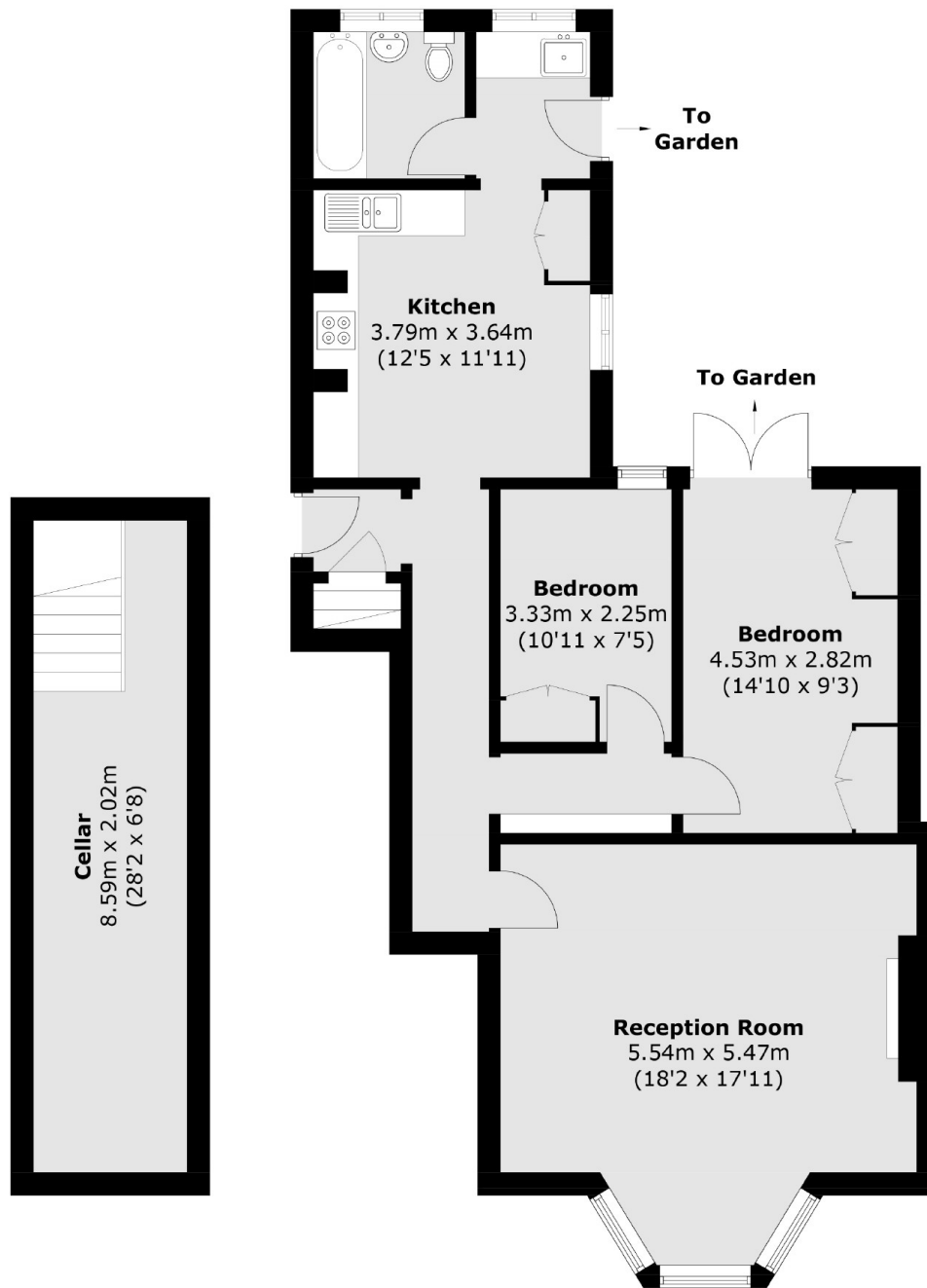
Available for the first time in almost 40 years is this delightful period conversion with a lovingly maintained private rear garden. Offering close to 1,070 Sq Ft, there is a characterful reception room, two bedrooms, a kitchen/diner and a freehold share.

Breakspears Road is a highly sought after road in the Brockley Conservation area with excellent transport links from Brockley, St. John's and Ladywell train stations.

Features

- Two Bedrooms
- Large Reception
- Brockley Conservation
- Private Garden
- Immaculate Condition
- 1,069 Sq Ft

Breakspears Road, London, SE4



Basement Floor

Ground Floor

Total area (approx.): 99.4 sq. m (1,069.9 sq. ft)
(Including Cellar)