



## Shell Road, SE13

£700,000

A well presented end of terrace house favourably positioned moments from Hilly Fields and Ladywell Village. There are four double bedrooms, a generous through lounge, two bathrooms and a south west facing garden with both patio and lawned areas.

Shell Road is a lovely residential road located just around the corner from Hilly Fields and between St. Johns, Lewisham and Ladywell train stations giving excellent transport links.

### Features

- Four Bedrooms
- Two Bathrooms
- Freehold
- End Of Terrace
- Close To Hilly Fields
- Close To Transport



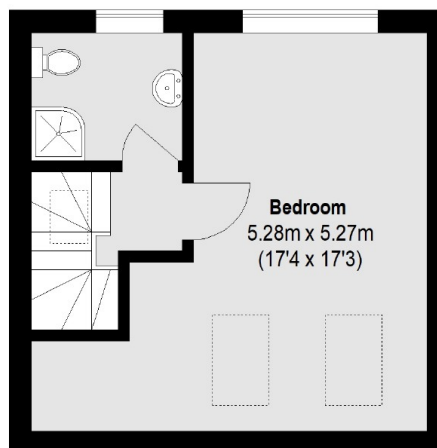
## Shell Road, SE13

The house is approached by a small entrance porch that opens into a broad hallway which has under stairs storage, to the right is a double through lounge with a bay window and hardwood flooring. To the back of the house is a smart kitchen with direct access to the garden.

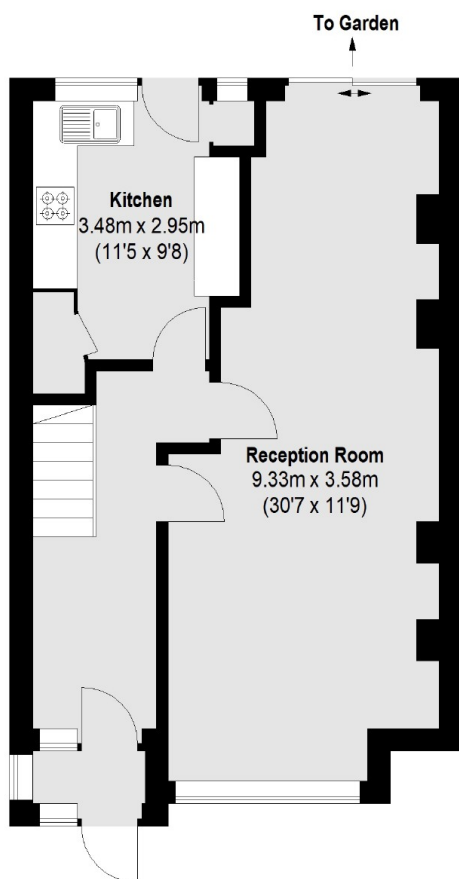
The first floor has three double bedrooms and a modern three piece family bathroom. The recently converted loft offers a generous fourth bedroom and shower room. To the rear of the property is a private garden with patio and lawned areas.



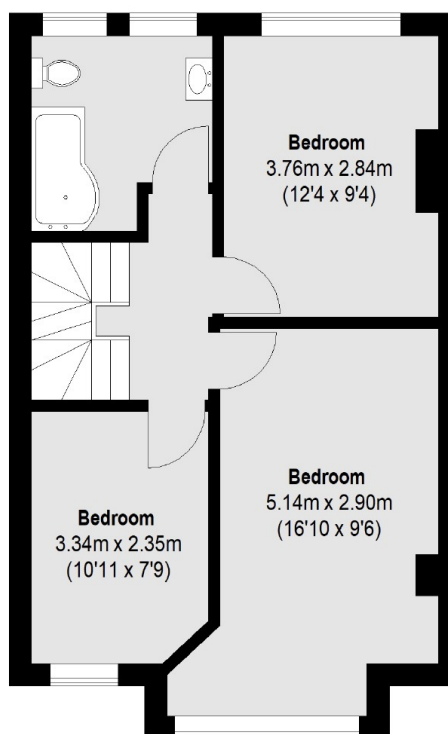
# Shell Road, London, SE13



Second Floor



Ground Floor



First Floor

Total area (approx.): 124.13 sq. m (1336 Sq. ft)