



Dalrymple Road, SE4

£375,000

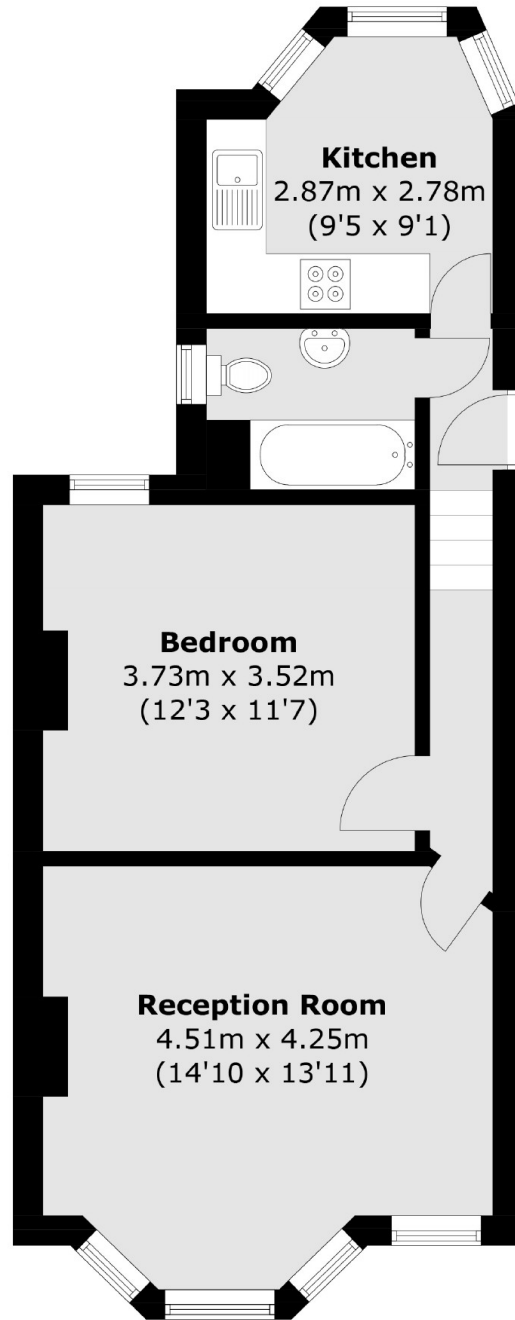
A fully renovated first floor Victorian conversion located close to Crofton Park Station. This property benefits from a spacious living room, separate kitchen, a double bedroom, share of freehold and is also being sold chain free.

Dalrymple Road is located in the heart of Brockley with its vibrant range of local shops, cafés and restaurants nearby. The fantastic transport links from both Brockley and Crofton Park stations can get you to London Bridge and Canary Wharf within 10-15 minutes.

Features

- Victorian Conversion
- Spacious Living Room
- Newly Renovated
- Share Of Freehold
- Chain Free
- Close To Station

Dalrymple Road, London, SE4



Total area (approx.): 46.3 sq. m (498.4 sq. ft)