



## Elverson Road, SE8

£635,000

An impressive two double bedroom Victorian house in exacting condition throughout having been lovingly maintained by the current owners with a well maintained private rear garden.

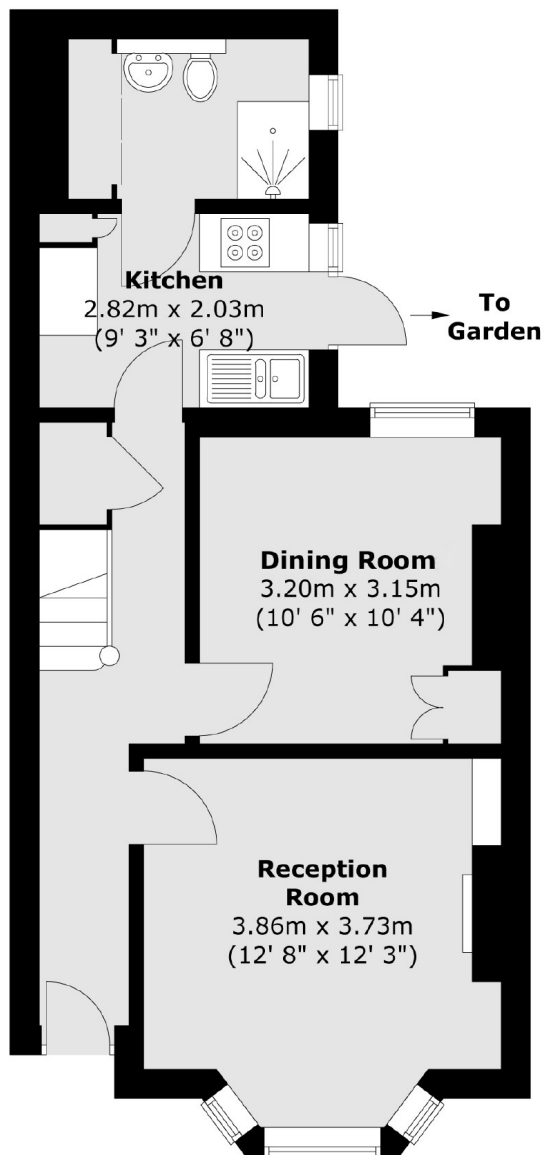
Elverson Road is perfectly positioned for DLR and Overground connections into London and the city via Elverson Rd and St Johns Stations (10 mins into London Bridge). The green spaces of Brookmill Park, Greenwich Park and Blackheath Common are all within easy reach.

### Features

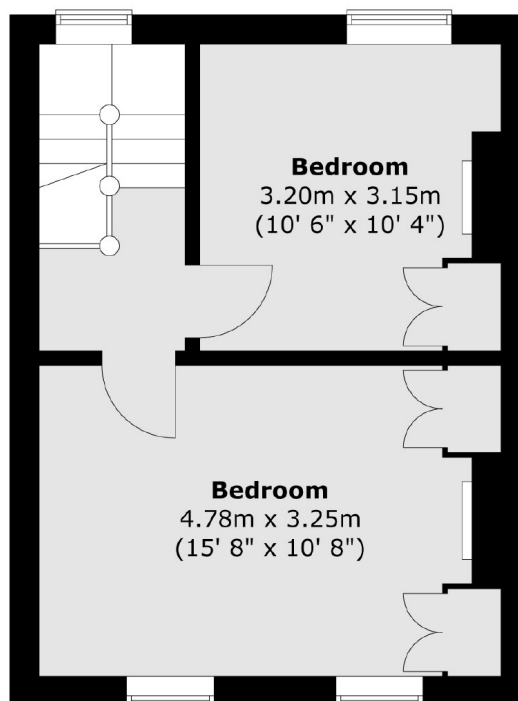
Well Presented  
Victorian Terrace  
Two Double Bedrooms  
Two Reception Rooms  
Close To Transport  
Potential To Extend STPP

# Elverson Road, London, SE8

## Ground Floor



## First Floor



Total area (approx.) : 76.4 sq. m (822 sq. ft)