



Elverson Road, SE8

£650,000

An impressive two double bedroom Victorian house in exacting condition throughout having been lovingly maintained by the current owners with a well maintained private rear garden.

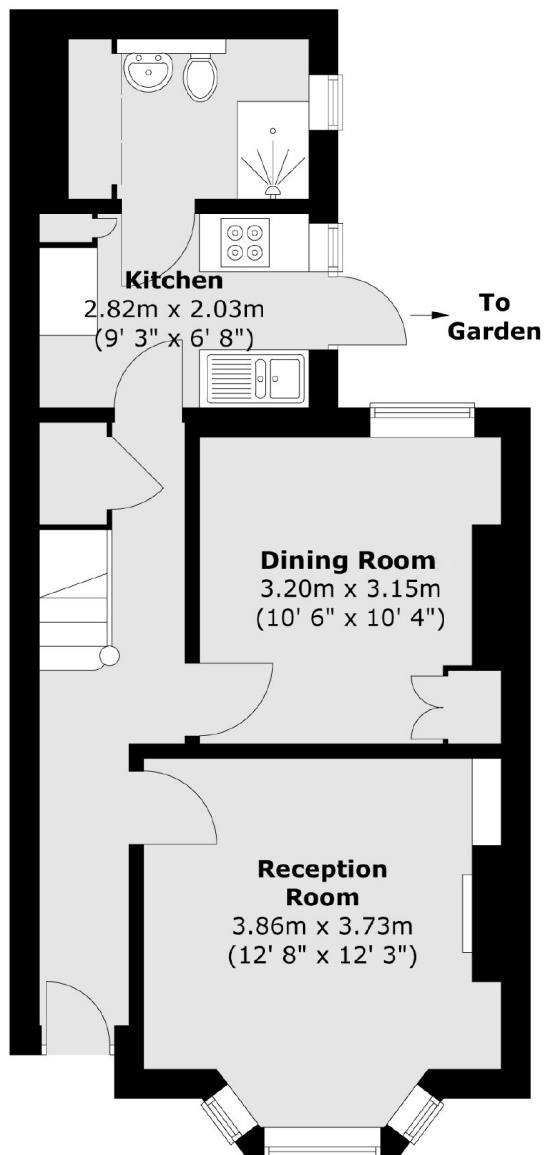
Elverson Road is perfectly positioned for train and DLR connections into London and the city. The green spaces of Brookmill Park, Greenwich Park and Blackheath Common are all within easy reach.

Features

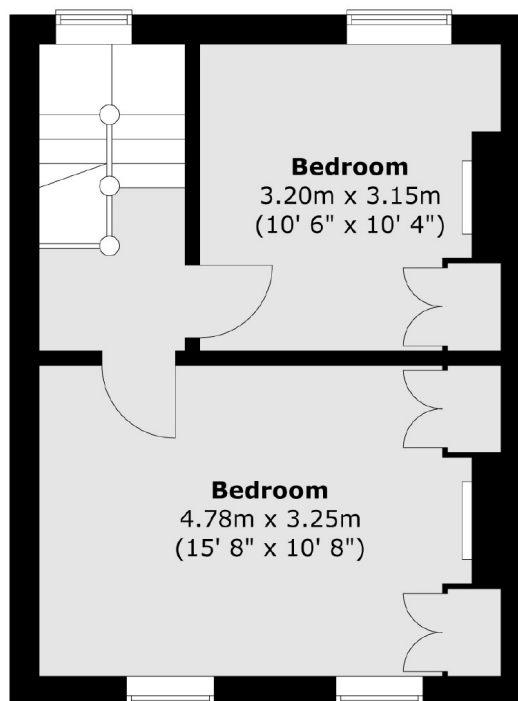
- Well Presented
- Victorian Terrace
- Two Double Bedrooms
- Two Reception Rooms
- Close To Transport
- Private Garden

Elverson Road, London, SE8

Ground Floor



First Floor



Total area (approx.) : 76.4 sq. m (822 sq. ft)