

Mercury Terrace, SE13

£550,000

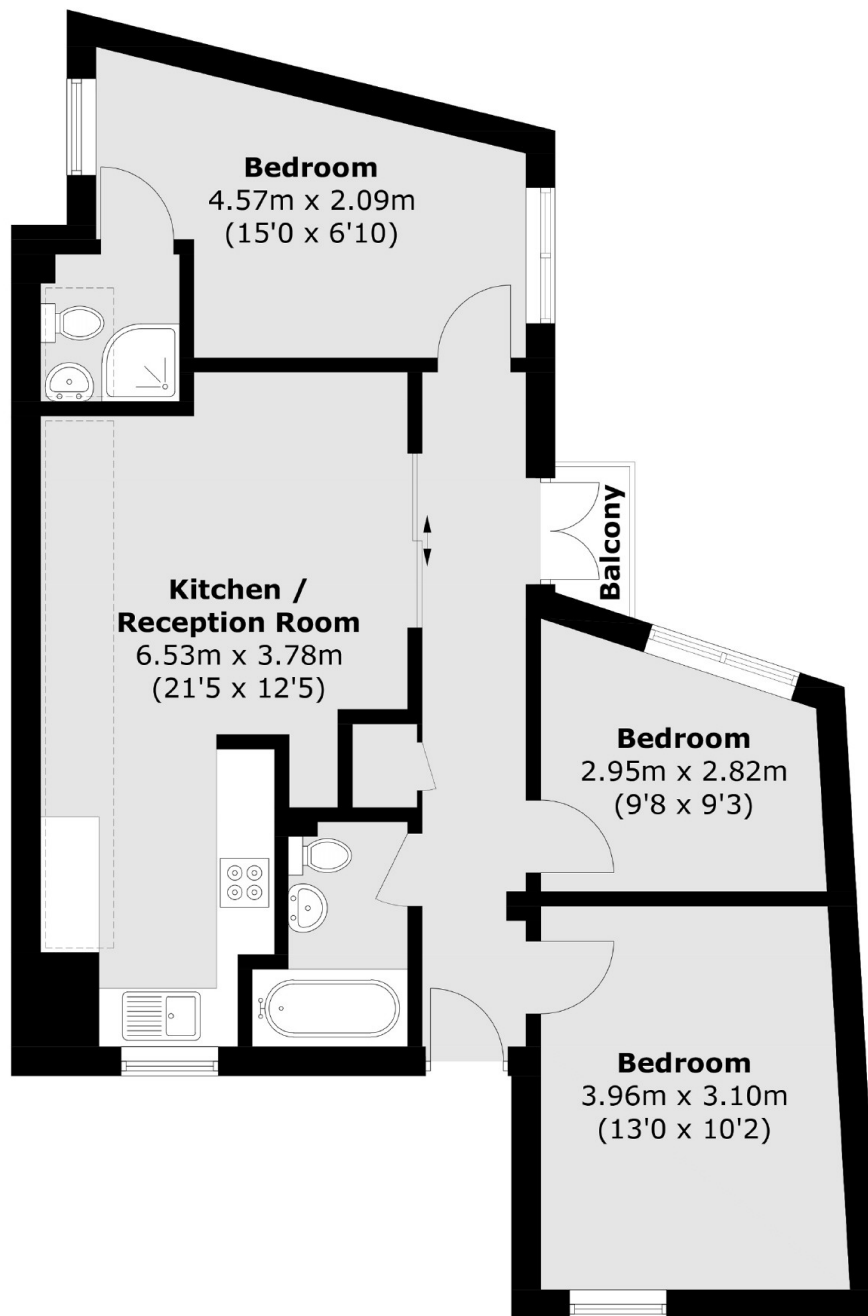
A large lateral apartment with three bedroom apartment, with two bathrooms and private outside space. This second floor apartment has a large reception room with kitchen/diner with South facing skylights bringing in plenty of natural light.

Ladywell has a rich history, reflected in its architecture, including Victorian and Edwardian houses. Trains run regularly via Ladywell Station taking just 11 minutes to reach London Bridge. Situated right in the heart of Ladywell Village with easy access to the variety of independent shops, cafes, and restaurants, allowing for a lively and friendly neighbourhood atmosphere.

Features

- Central Ladywell Village
- Share Of The Freehold
- Three Bedrooms
- Two Bathrooms
- Penthouse Apartment
- Large Balcony
- Brand New Build
- Build Guarantee

Mercy Terrace, London, SE13



Second Floor

Total area (approx.): 68.3 sq. m (735.2 sq. ft)
Balcony: 1.1 sq. m (11.8 sq. ft)