



Mercury Terrace, SE13

£440,000

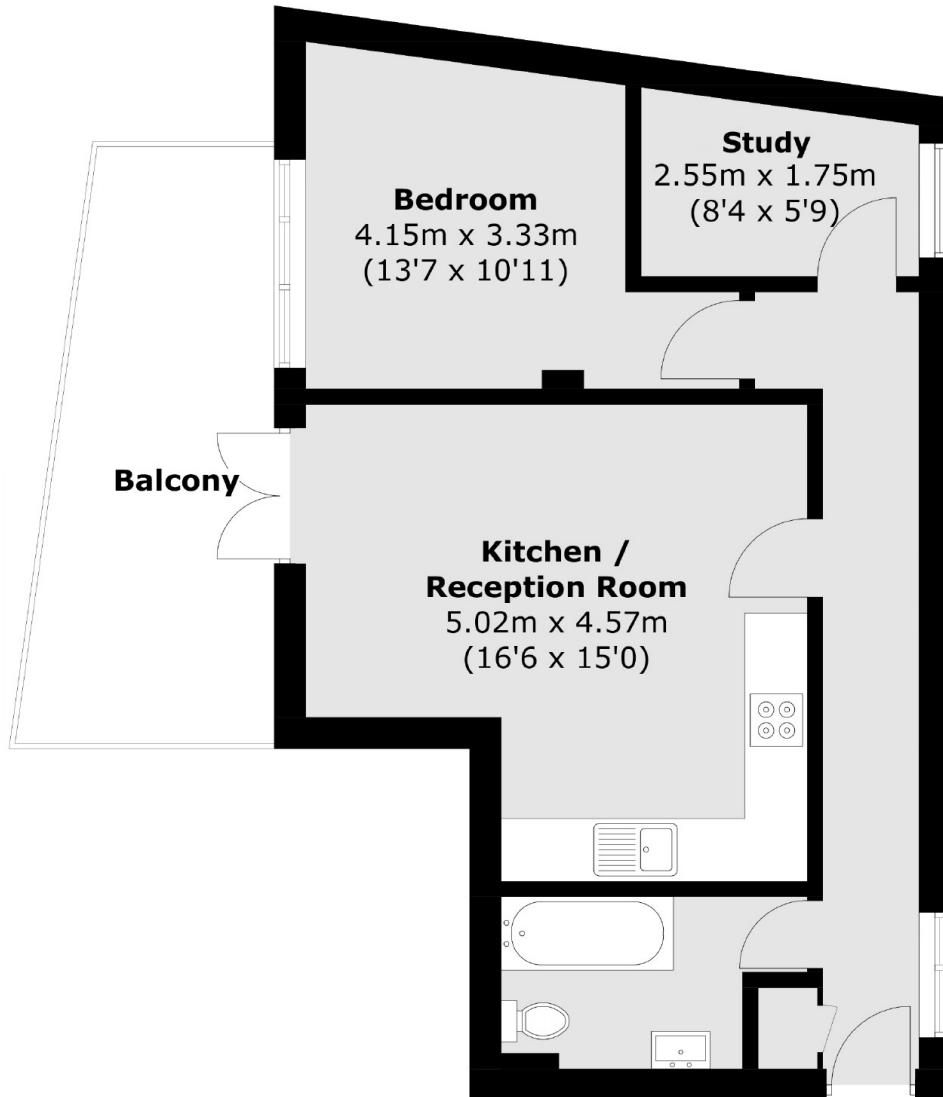
A large one bedroom apartment, with additional study/dressing room/children's room. There is an open plan kitchen/diner, with high end finishings. All situated right in the heart of Ladywell Village, an ever popular location for first time buyers and investors alike!

Transport links are excellent, with Ladywell railway station providing direct services to central London, making it an attractive location for commuters. The area is also well-served by bus routes and is within walking distance of Lewisham town center, which offers additional shopping, dining, and entertainment options.

Features

- One Bedroom Apartment
- Study/Dressing Room
- Juliette Balcony
- Share Of The Freehold
- Low Running Costs
- Near To Ladywell Station
- Ladywell Fields

Mercy Terrace, London, SE13



Second Floor

Total area (approx.): 49.4 sq. m (531.7 sq. ft)
Balcony: 15.7 sq. m (169.0 sq. ft)