



Foxborough Gardens, SE4

£550,000

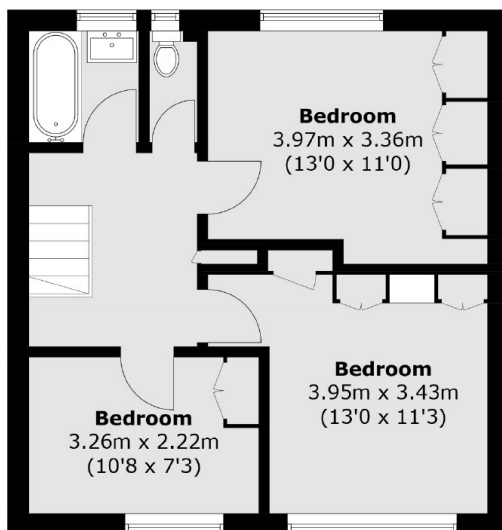
A mid terrace house in a quiet cul-de-sac favourably positioned for Brockley and Ladywell Village. There are three bedrooms, a generous reception room and private front and rear gardens, with renovation opportunity and offered with no onward chain.

Foxborough Gardens is well positioned for both Brockley and Ladywell Village centres with excellent transport links and frequent services into London and the City from Crofton Park, Ladywell and Brockley stations.

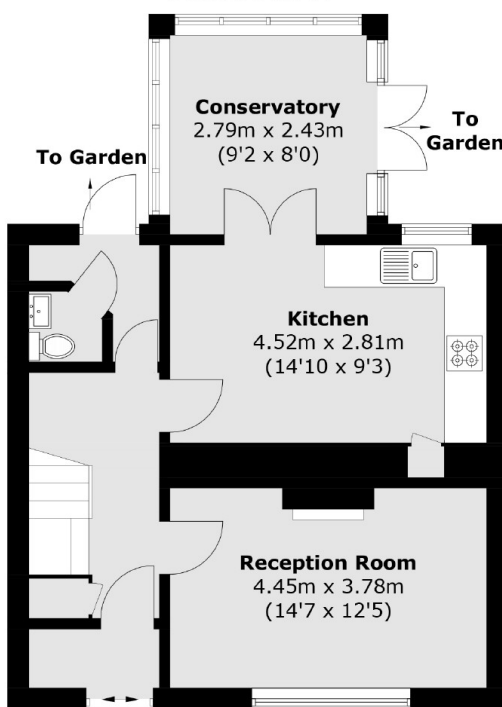
Features

- Three Bedrooms
- Generous Reception Room
- Private Rear Garden
- Cul-De-Sac
- Close To Transport
- Chain Free

Foxborough Gardens, London, SE4



First Floor



Ground Floor

Total area (approx.): 94.1 sq. m (1,012.9 sq. ft)