



Ladcroft Road, SE13

£1,050,000

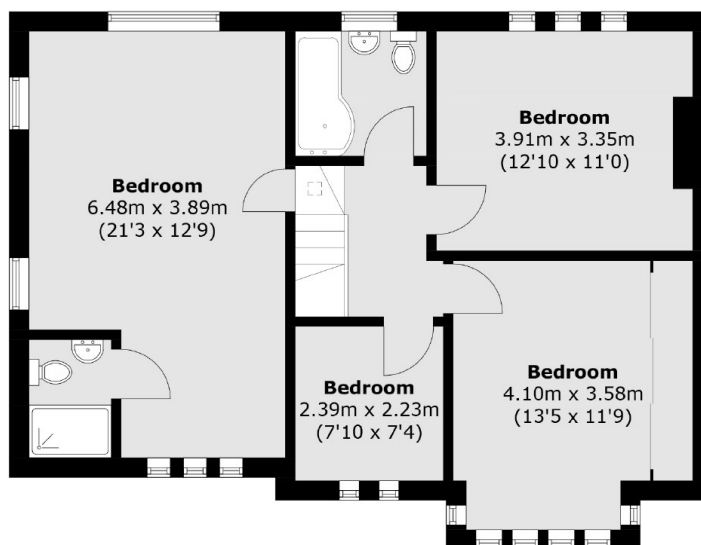
A fantastic double fronted five bedroom end of terrace house moments Hilly Fields Park. There is off-street parking and an exceptionally large private rear garden.

Ladcroft Road is a lovely residential road located just around the corner from Hilly Fields and between St. John's, Lewisham and Ladywell train stations giving excellent transport links.

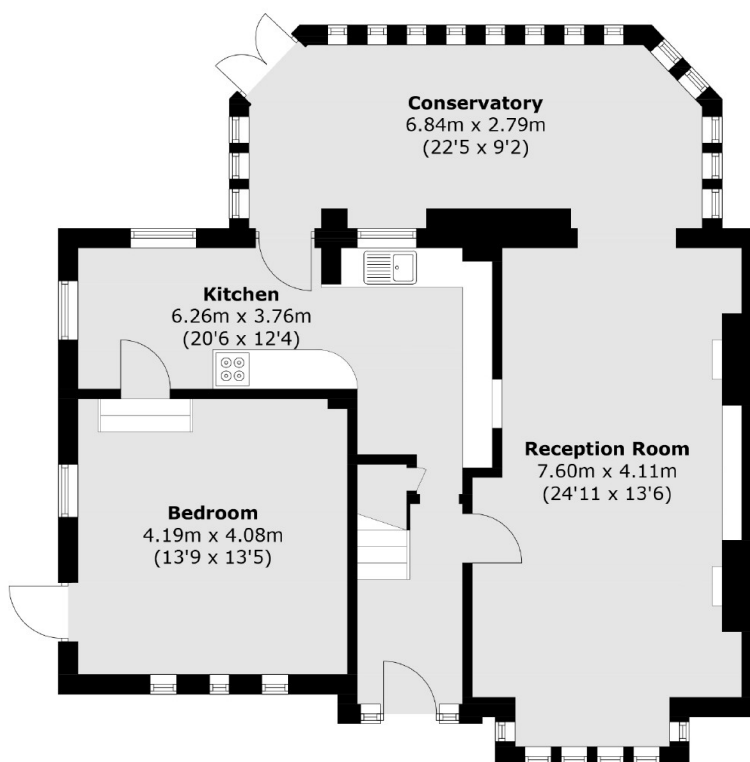
Features

- Five Bedrooms
- Two Bathrooms
- Conservatory
- End Of Terrace
- Off Street Parking
- Large Rear Garden

Ladycroft Road, London, SE13



First Floor



Ground Floor

Total area (approx.): 160.1 sq. m (1,723.3 sq. ft)