



Foxberry Road, SE4

£950,000

A lovingly well maintained end of terrace Victorian family home. There is a bay fronted double reception room, three double bedrooms served by a two piece bathroom suite and a generous kitchen diner leading to a well maintained rear garden.

Foxberry Road is a desirable road and only a few minutes walk to Brockley station and the vibrant range of local shops, cafés and restaurants.

Features

- Three Bedrooms
- End Of Terrace
- Victorian House
- Freehold
- Chain Free
- Well Maintained Rear Garden



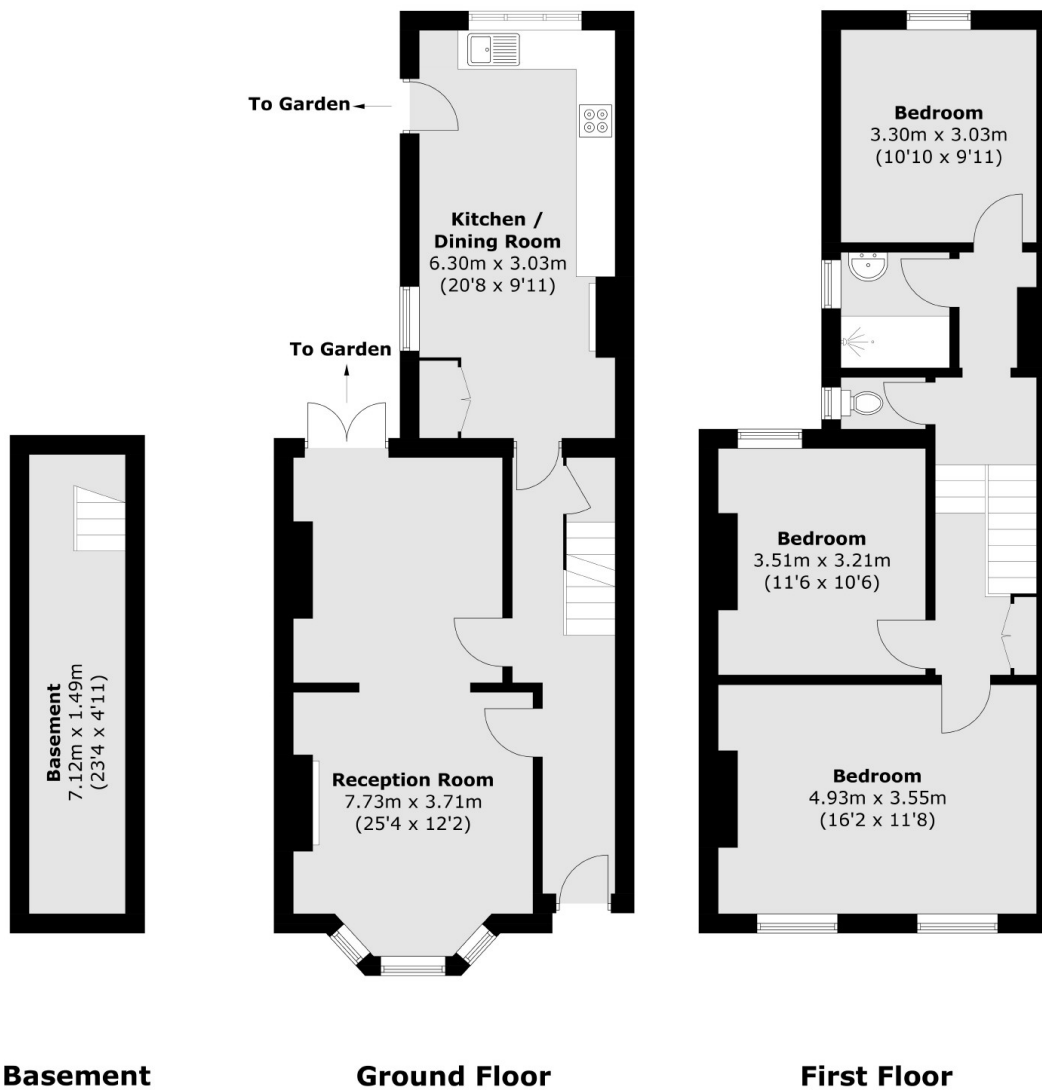
Foxberry Road, SE4

The entrance hall leads into a double reception room with bay window and high ceilings. To the rear of the property is well proportioned kitchen/diner with direct access to a private easterly facing garden, a handy cellar completes the ground floor.

On the first floor the principle bedroom is located to the front. There are two further double bedrooms served by a remodelled shower room and separate WC.



Foxberry Road, London, SE4



Total area (approx.): 122.3 sq. m (1,316.5 sq. ft)