



Kneller Road, SE4

£825,000

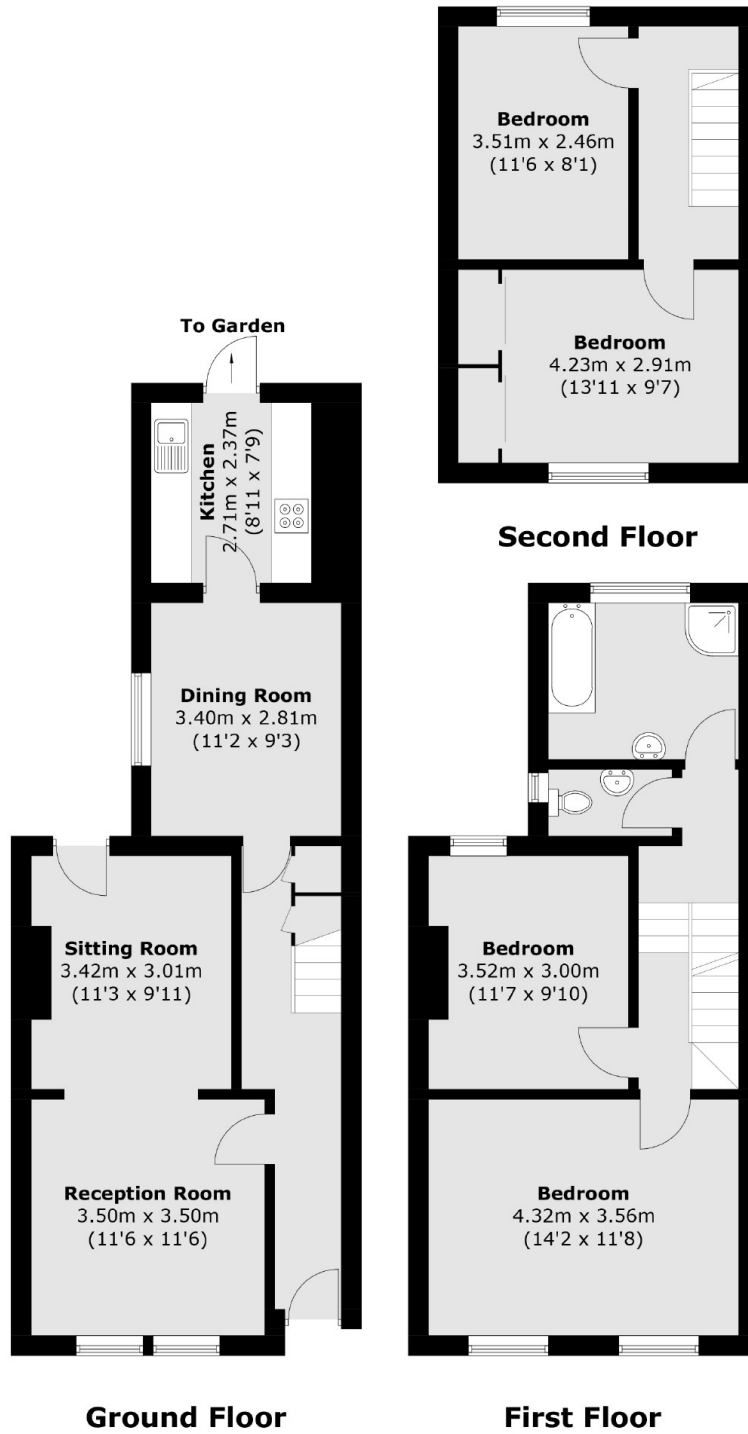
A four double bedroom Victorian terraced house arranged over three floors and 1,326 sq ft. There is a double reception, a separate dining room and a low maintenance rear garden.

Kneller Road is a quiet residential road and only a few minutes walk to Brockley station and the vibrant range of local shops, cafés and restaurants.

Features

- Well Presented
- Four Bedrooms
- Victorian House
- Freehold
- Close To Transport
- Low Maintenance Rear Garden

Kneller Road, London, SE4



Total area (approx.): 123.2 sq. m (1,326 sq. ft)