



Ladywell Road, SE13

£875,000

Located just a few steps from Hilly Fields, this beautiful Edwardian home has three spacious bedrooms, double reception and a conservatory leading onto a south facing garden.

Ladywell Road is a popular road close to the open space of Hilly Fields Park and the amenities of Ladywell Village within the catchment for excellent primary and secondary schools. Ladywell and Lewisham train stations offer excellent links into the City.

Features

- Three Bedrooms
- Double Reception
- Edwardian Terrace
- Close To Hilly Fields
- Close To Transport
- South Facing Garden



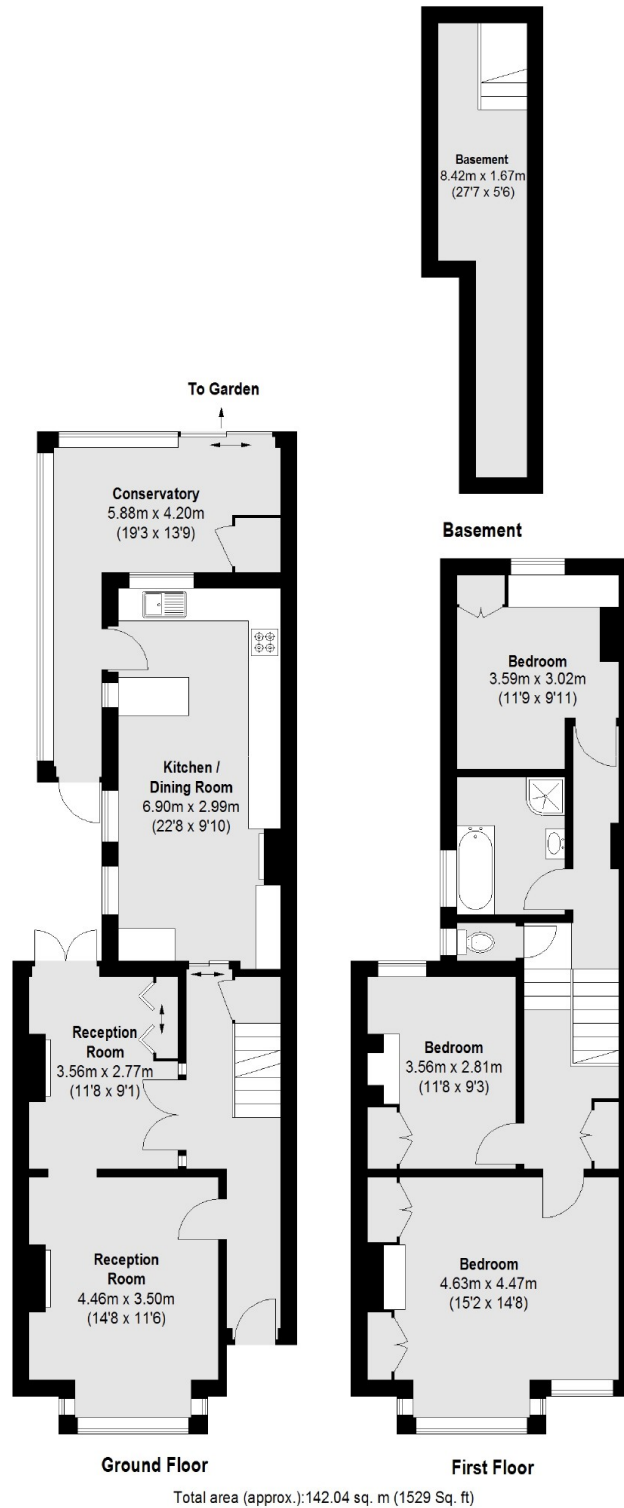
Ladywell Road, SE13

As you enter the ground floor, you have two reception rooms with period features and a kitchen to the rear leading into the wraparound conservatory which opens up onto a good size garden with an amazing patio area perfect for al fresco dining. A large cellar completes the ground floor space.

On the first floor, you have three double bedrooms with a bathroom and separate WC. There is also double loft space which offers the potential to convert subject to the usual consents.



Ladywell Road, London, SE13



Total area (approx.): 142.04 sq. m (1529 Sq. ft)