



Howson Road, SE4

£850,000

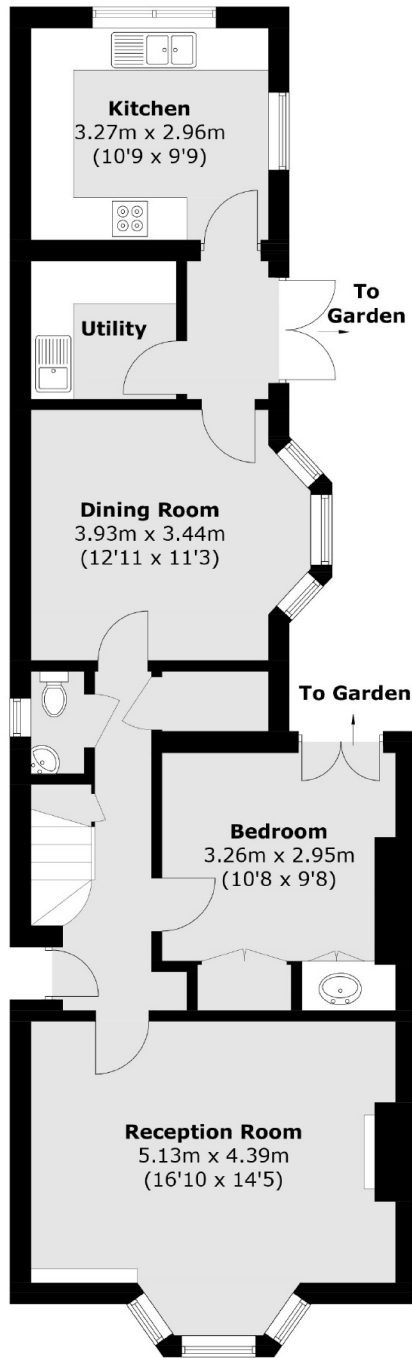
A fantastic end of terrace Victorian home offering in excess of 1,515 Sq Ft with a large east facing garden. It has plenty of potential to extend into the side return and loft STPP.

Howson Road is a desirable road in the heart of Brockley with its vibrant range of local shops, cafés and restaurants nearby. The fantastic transport links from both Brockley and Crofton Park stations offer frequent services into London and the City.

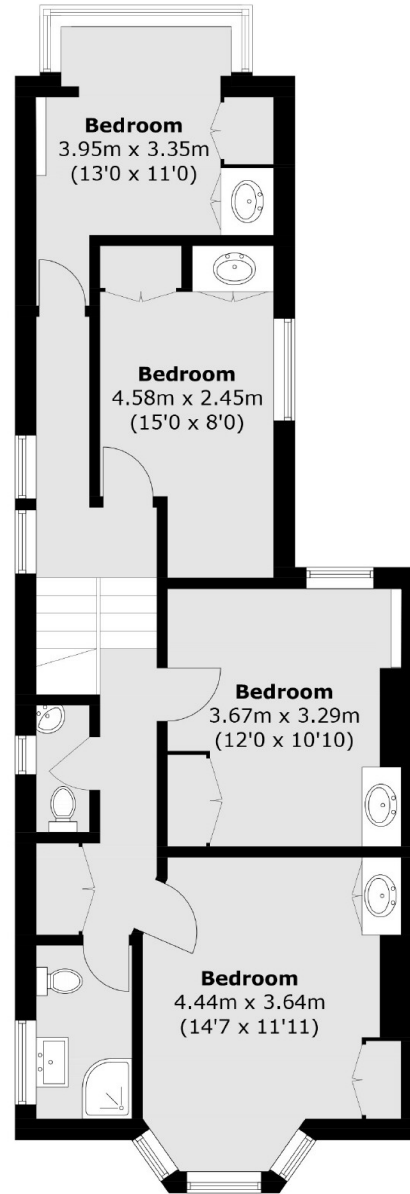
Features

- Victorian Property
- Freehold
- Chain Free
- Large East Facing Garden
- Potential To Extend STPP
- Close To Transport

Howson Road, London, SE4



Ground Floor



First Floor

Total area (approx.): 140.8 sq. m (1,515.5 sq. ft)