



Rushey Mead, SE4

£350,000

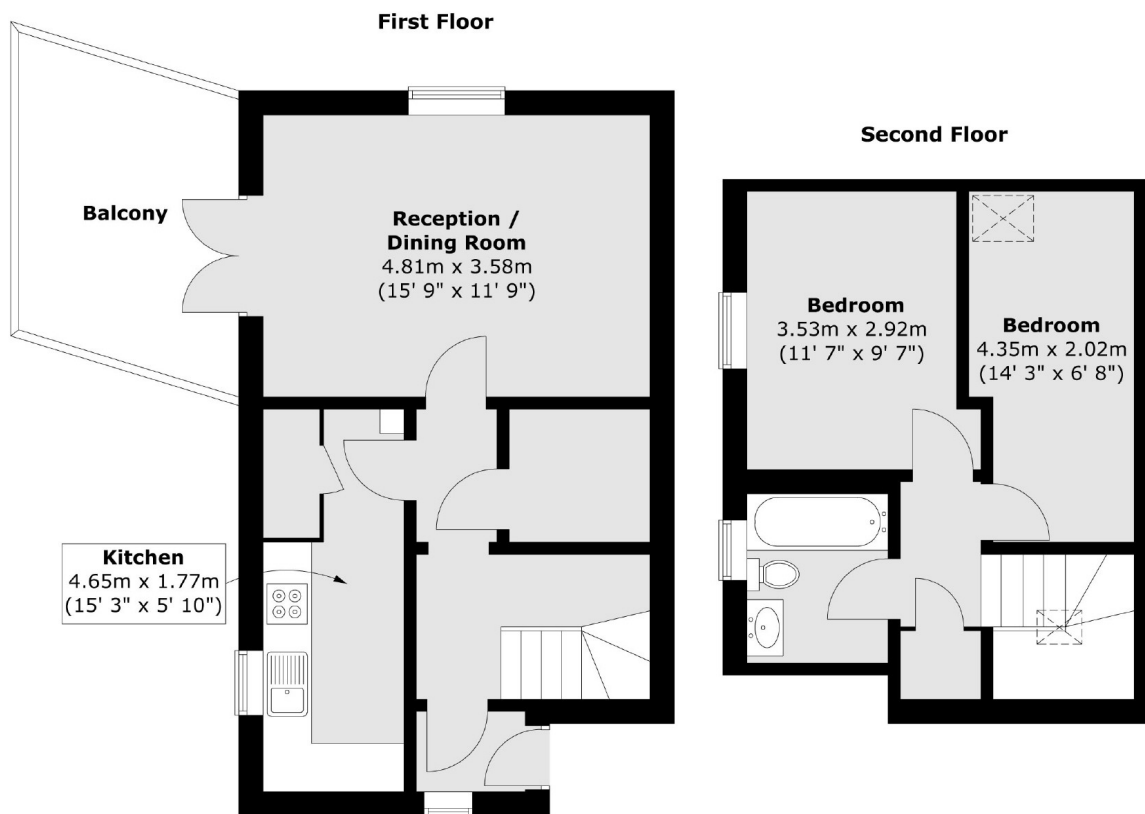
A well presented split level apartment measuring 736 sq ft. There are two double bedrooms, a generous reception room and large private balcony.

Rushey Mead is well position for both Brockley and Ladywell Village centres with excellent transport links and frequent services into London and the City from Crofton Park, Ladywell and Brockley stations.

Features

Two Double Bedrooms
Large Reception Room
Private Balcony
Well Presented
Great Transport Links
Chain Free

Rushey Mead, London, SE4



Total area (approx.) : 68.4 sq. m (736 sq. ft)
Total balcony area (approx.) : 8.9 sq. m (96 sq. ft)