

## Cumberland Place, SE6

£250,000

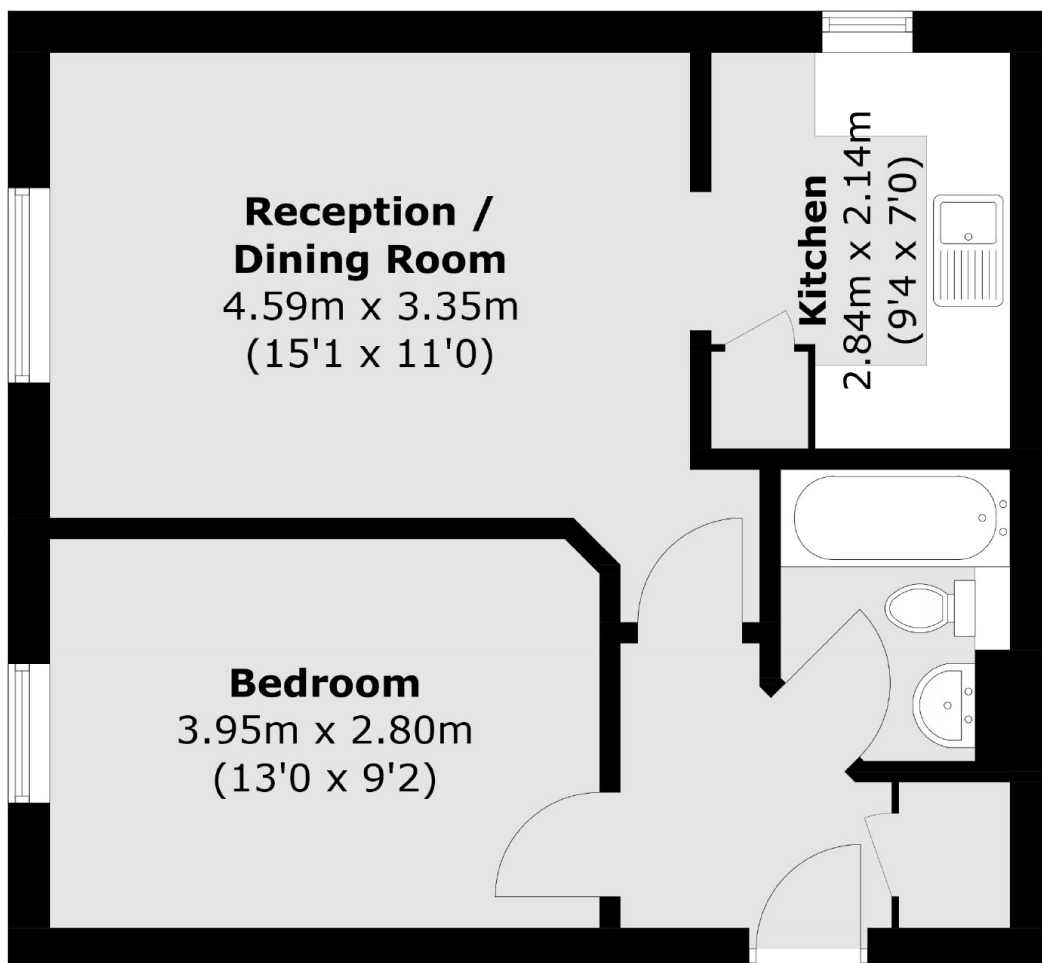
A well presented one bedroom ground floor apartment situated within a quiet private development. Comprising a large reception room, double bedroom, remodelled kitchen and bathroom with the added benefit of an allocated parking space.

Cumberland Place is located within easy reach of Hither Green station which has regular services into London and the City.

### Features

- Well Presented
- Double Bedroom
- Large Reception Room
- Allocated Parking
- Quiet Development
- Chain Free

# Cumberland Place, London, SE6



Total area (approx.): 43.6 sq. m (469.3 sq. ft)