



Mount Pleasant Road, SE13

£275,000

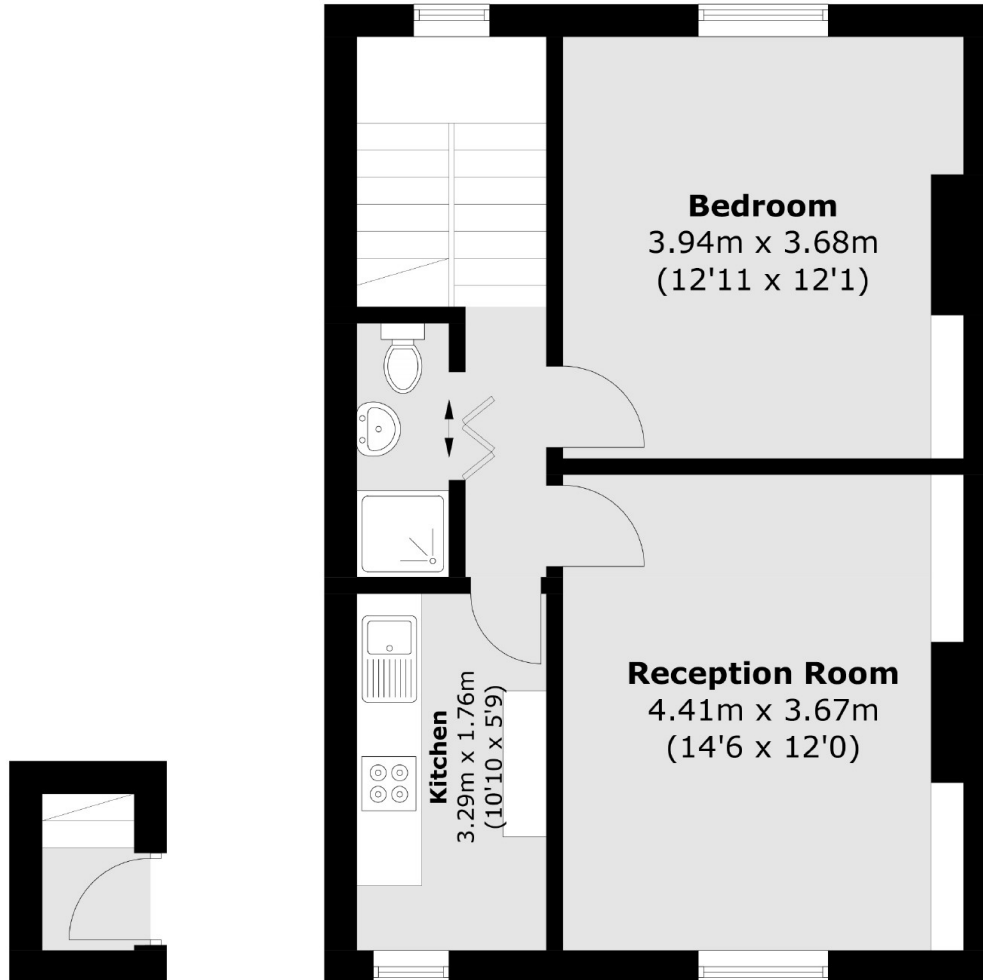
Guide Price: £275,000 to £300,000 - A delightful top floor flat set within an attractive period building. There is a bright reception room, a large double bedroom and remodelled kitchen.

Mount Pleasant Road is a quiet residential road equidistant from Hither Green, Ladywell and Catford stations with frequent service into London and the City.

Features

- Large Double Bedroom
- Bright Reception Room
- Well Presented
- Long Lease
- Close To Stations
- 524 Sq Ft

Mount Pleasant Road, London, SE13



Second Floor

Third Floor

Total area (approx.): 48.7 sq. m (524.2 sq. ft)