



Beecroft Road, SE4

£890,000

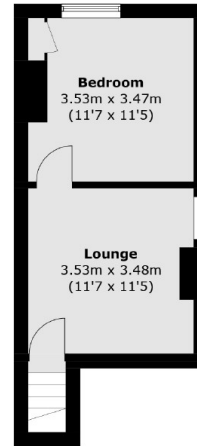
A four double bedroom Victorian terraced house with off street parking, arranged over three floors and 1,784 Sq Ft in a highly desirable location. There is potential to improve throughout and extend on the ground floor and into the loft subject to the usual consents.

Beecroft Road is a residential street conveniently located for the cafés, bars and amenities of Brockley Road. Brockley Overground and Crofton Park train stations offer easy access into London and the City.

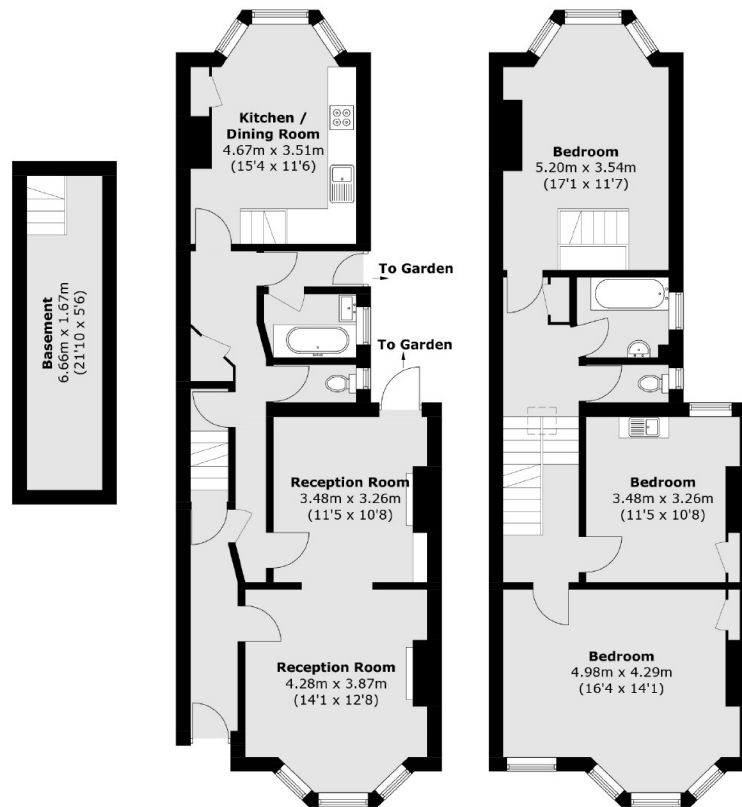
Features

- Four Double Bedrooms
- Two Bathrooms
- Large Rear Garden
- Double Reception
- Modernisation Potential
- Off Street Parking

Beecroft Road, London, SE4



Second Floor



Basement

Ground Floor

First Floor

Total area (approx.): 166.7 sq. m (1,794.3 sq. ft)