



## Beecroft Road, SE4

£1,000,000

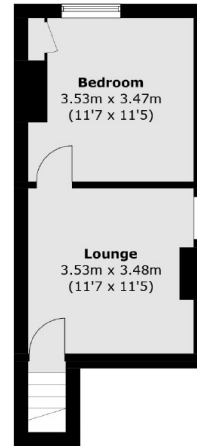
A four double bedroom Victorian terraced house arranged over three floors and 1,784 Sq Ft in a highly desirable location. There is potential to improve throughout and extend on the ground floor and into the loft subject to the usual consents.

Beecroft Road is a residential street conveniently located for the cafés, bars and amenities of Brockley Road. Brockley Overground and Crofton Park train stations offer easy access into London and the City.

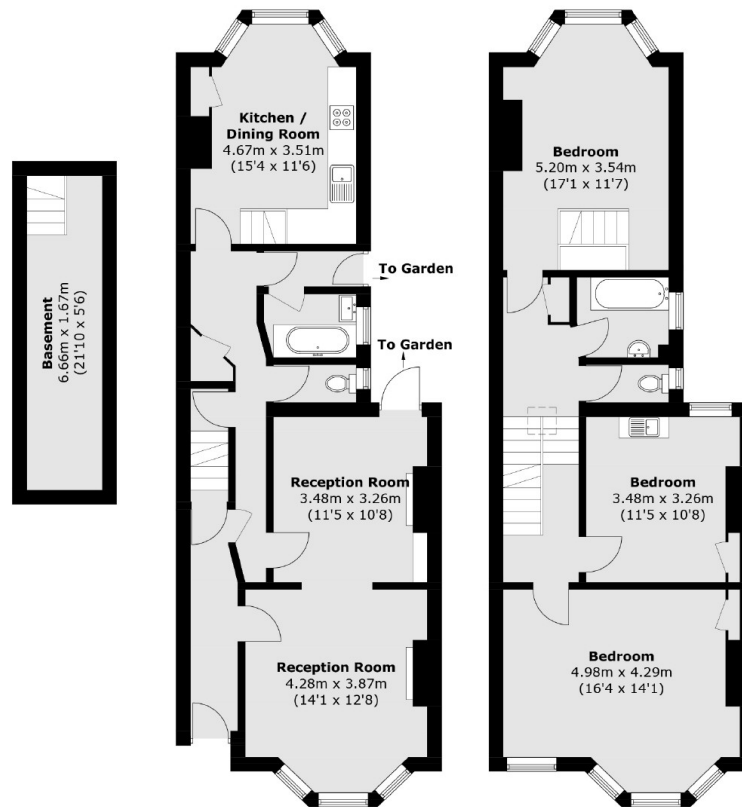
### Features

- Four Double Bedrooms
- Two Bathrooms
- Large Rear Garden
- Double Reception
- Modernisation Potential
- Chain Free

# Beecroft Road, London, SE4



**Second Floor**



**Basement**

**Ground Floor**

**First Floor**

Total area (approx.): 166.7 sq. m (1,794.3 sq. ft)