



## Peppermead Square, SE13

£650,000

A well presented modern house situated in a quiet cul-de-sac moments from Ladywell Village. There are three double bedrooms, two bathrooms, an open plan reception room/kitchen area leading out to a private south facing garden.

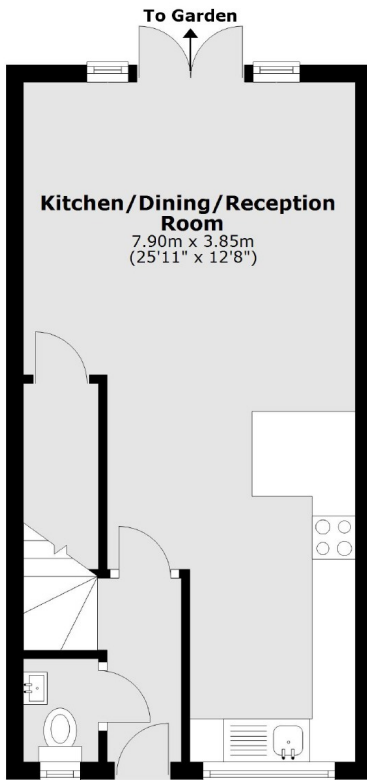
Peppermead Square is conveniently located for Ladywell and Crofton Park stations and the amenities of Ladywell village, also close to both Ladywell Fields and Hilly Fields Park. Ideal for the commuter being a short walk to Ladywell station giving frequent services into Charing Cross, London Bridge and Cannon Street.

### Features

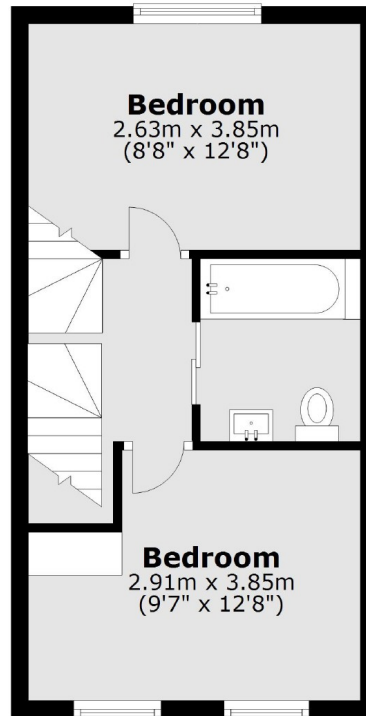
- Three Double Bedrooms
- Two Bathrooms
- Private Garden
- Wooden Flooring Throughout
- Cul-De-Sac - Allocated Parking
- Close To Transport

# Peppermead Square, London, SE13

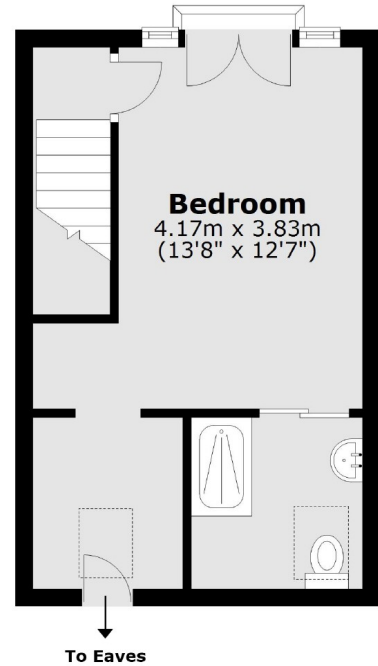
## Ground Floor



## First Floor



## Second Floor



Total area: approx. 84.8 sq. metres (912.7 sq. feet)