



George Lane, SE13

£300,000

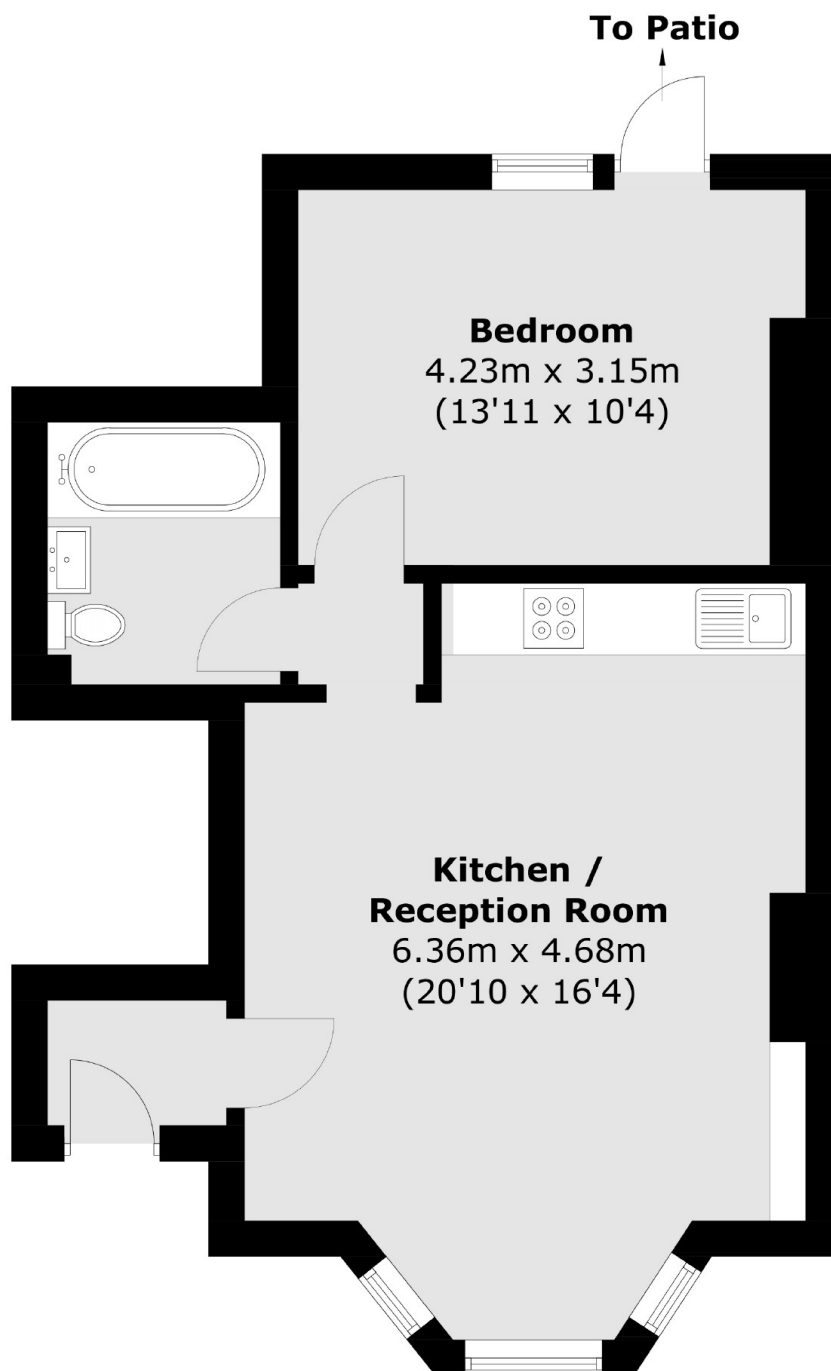
A well presented share of freehold ground floor flat with a private entrance set within an imposing Victorian building. There is a spacious reception/dining room with plenty of natural light, a recently remodelled bathroom and a large bedroom leading to a private patio.

George Lane is a popular residential road equidistant from Hither Green, Ladywell and Catford stations with frequent services into London and the City.

Features

- Double Bedroom
- Large Reception Room
- Remodelled Bathroom
- Private Entrance
- Large Front Garden
- Private Patio

George Lane, London, SE13



Total area (approx.): 47.4 sq. m (510.2 sq. ft)

Dexters

Brockley
369 Brockley Road
London
SE4 2AG
Sales
020 8815 2220

Energy Rating: C. We aim to make our particulars both accurate and reliable. However they are not guaranteed; nor do they form part of an offer or contract. If you require clarification on any points then please contact us, especially if you're traveling some distance to view. Please note that appliances and heating systems have not been tested and therefore no warranties can be given as to their good working order.

 **RICS** | Regulated
Estate Agent
and Letting Agent

dexters.co.uk