



Wearside Road, SE13

£1,200,000

Dexters



Wearside Road, SE13

Moments from Ladywell Village, this imposing and stunningly presented double fronted semi-detached house with a double storey side extension, offering in excess of 1800 Sq Ft with gated off-street parking.

Tucked away behind a quiet residential street, this double fronted house boasts an exceptionally designed double storey side extension and ample gated parking space. Upon entering the property, you are greeted with a generous porch and hallway that provides access into the two separate reception rooms.

Moving round into the vast open plan kitchen/dinning and entertaining space you will find a smart fully integrated kitchen which blends seamlessly with the dining space and light filled entertaining area, will also find a downstairs W/C and a separate office room.

Across the first floor, there are four double bedrooms with the master bedroom benefiting from a wrap around dressing room and en-suite, there is also another family bathroom.

Wearside Road is located a short walk from the amenities of Ladywell Village and Ladywell station which provides quick and easy access into central London.

Features

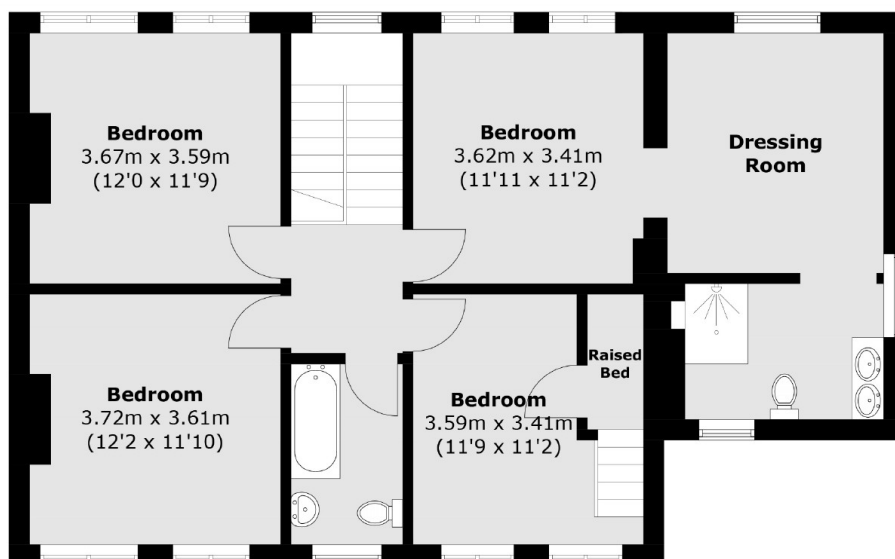
- Double Fronted House
- Semi-Detached
- Double Storey Side Extension
- Gated Off Street Parking
- Generous Rear Garden
- Over 1800 Sq Ft



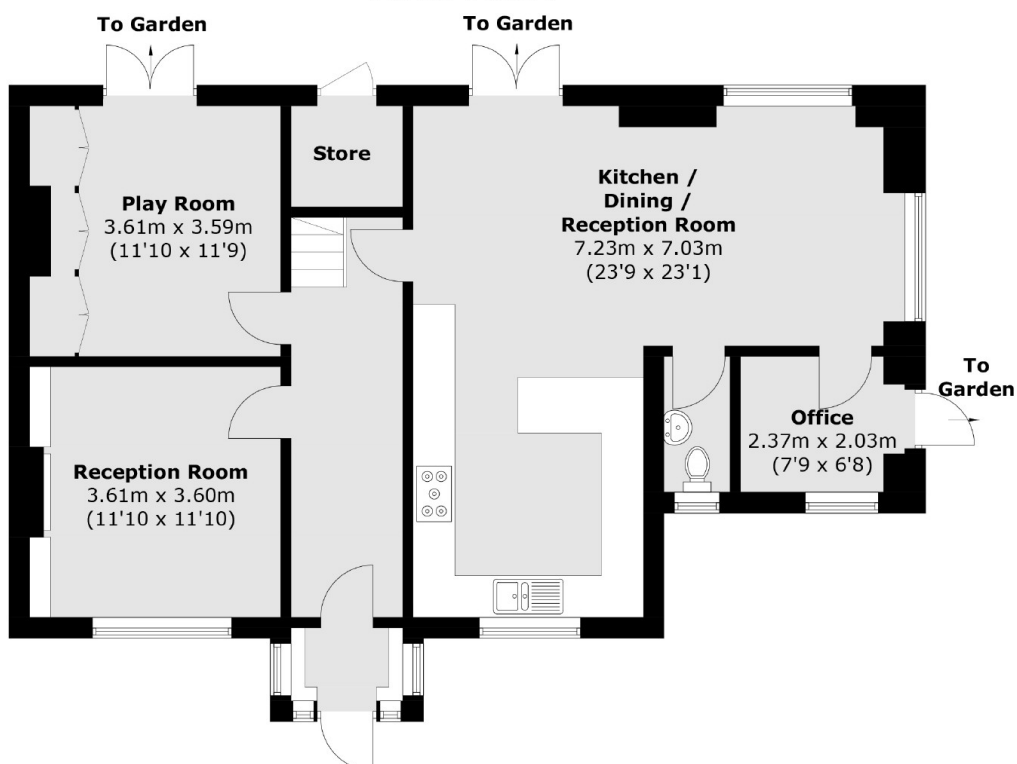




Wearside Road, London, SE13



First Floor



Ground Floor

Total area (approx.): 168.8 sq. m (1,816.9 sq. ft)
Store (approx.): 2.4 sq. m (25.8 sq. ft)