



Crescent Way, SE4

£280,000

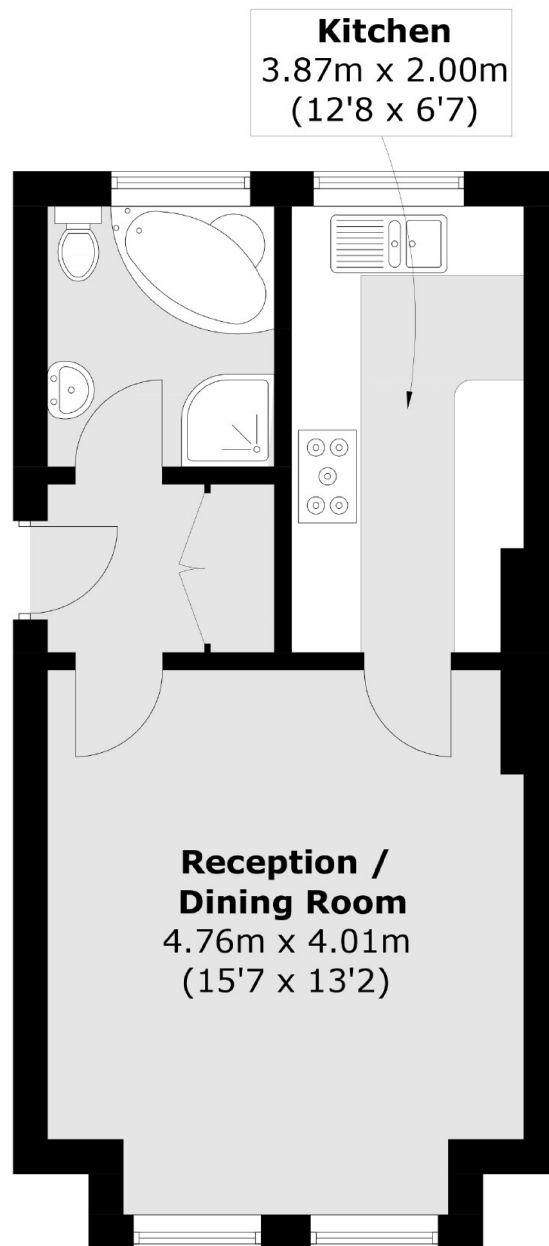
A well presented and thoughtfully laid out ground floor period conversion with separate kitchen and access to a communal garden. The property is centrally located for Brockley Station and Hilly Fields park.

Crescent Way is a highly sought after road in the Brockley Conservation area with excellent transport links from Brockley, St Johns and Lewisham train stations.

Features

- Super Studio
- Separate Kitchen
- Brockley Conservation
- Ground Floor
- Period Conversion
- Communal Garden

Crescent Way, London, SE4



Total area (approx.): 34.9 sq. m (375.6 sq. ft)