



Adelaide Avenue, SE4 £775,000

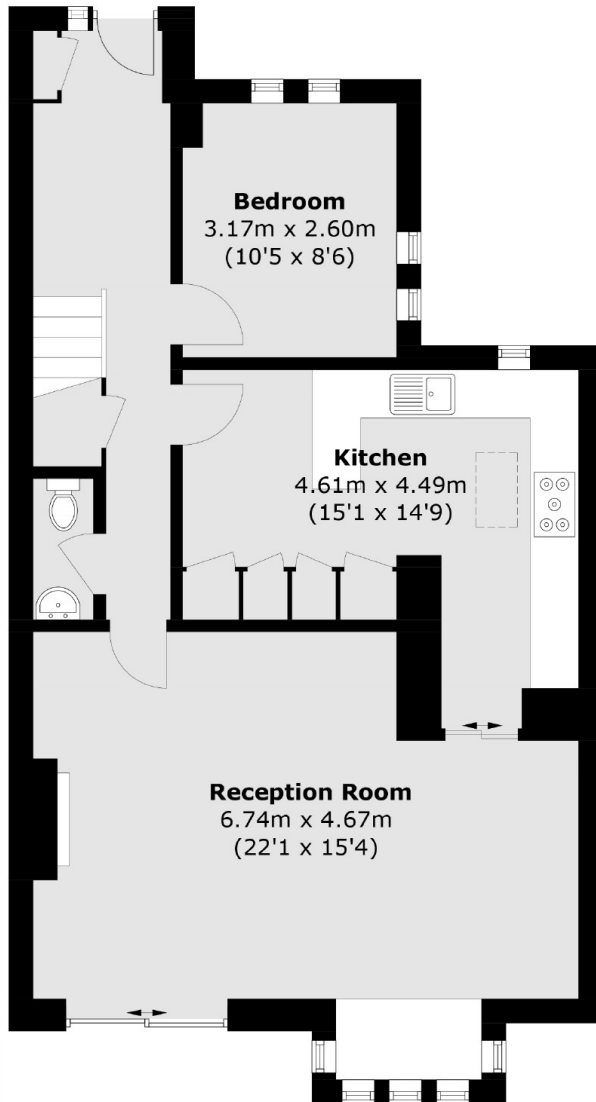
A superb semi-detached freehold home occupying a sought-after position moments from Hilly Fields Park offering 1,213 Sq Ft of living space and off street parking for two cars.

Adelaide Avenue is a desirable road in the Brockley Conservation area and moments from Brockley Road with its vibrant range of local shops, cafés and restaurants nearby. The fantastic transport links from both Brockley and Crofton Park stations can get you to London Bridge and Canary Wharf in 10 and 15 minutes respectively.

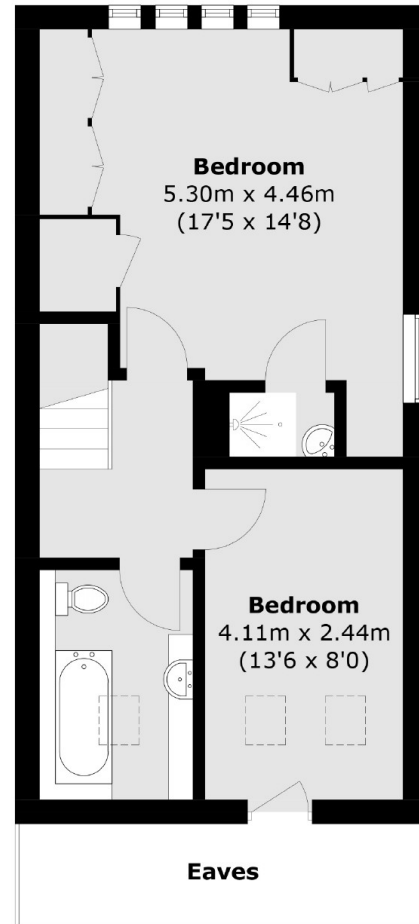
Features

- Freehold
- Three Bedrooms
- Off Street Parking
- Low Maintenance Rear Garden
- Fantastic Condition
- Brockley Conservation Area

Adelaide Avenue, London, SE4



Ground Floor



First Floor

Total area (approx.): 112.7 sq. m (1,213.1 sq. ft)
(Excluding Eaves)