



## Loampit Hill, SE13

£350,000

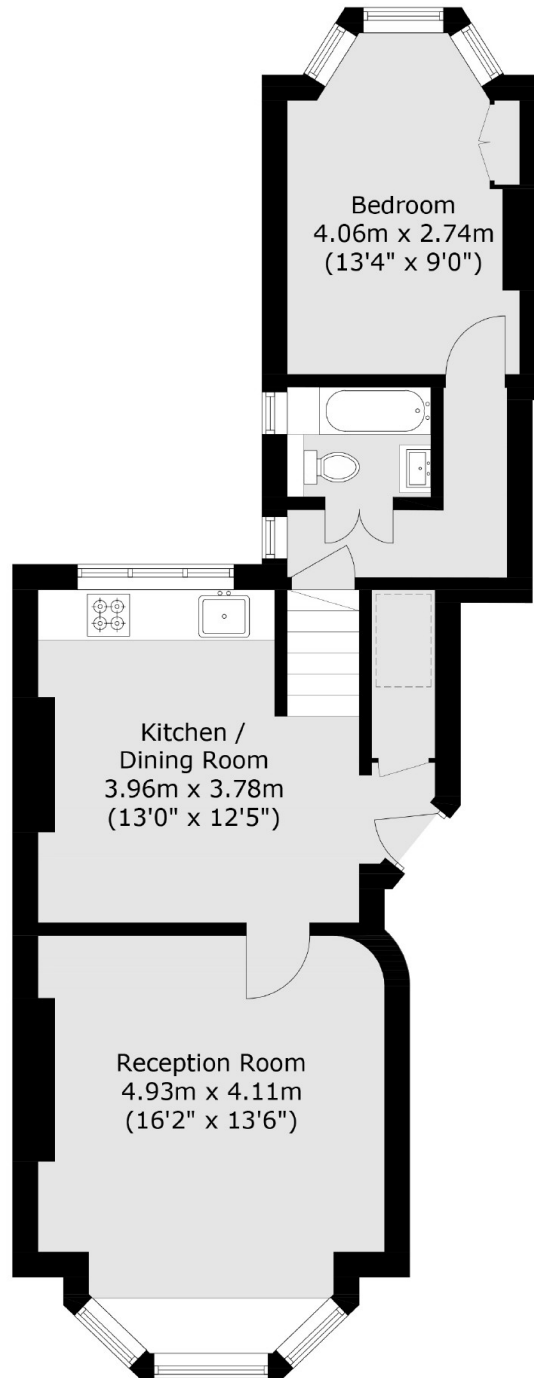
A well presented period conversion in great condition and high ceilings throughout. There is a spacious reception room, separate kitchen diner and a large double bedroom.

Loampit Hill is conveniently located between Hilly Fields Park and Brookmill Park, with Brockley Market just round the corner and well positioned for both St Johns and Lewisham train stations with easy commute into London Bridge.

### Features

- Double Bedroom
- Separate Kitchen Diner
- Chain Free
- Convenient Location
- Well Presented
- Spacious Flat

# Loampit Hill, London, SE13



Total area (approx.): 53.3 sq. m (573.7 sq. ft)