



Odell Walk, SE13

£325,000

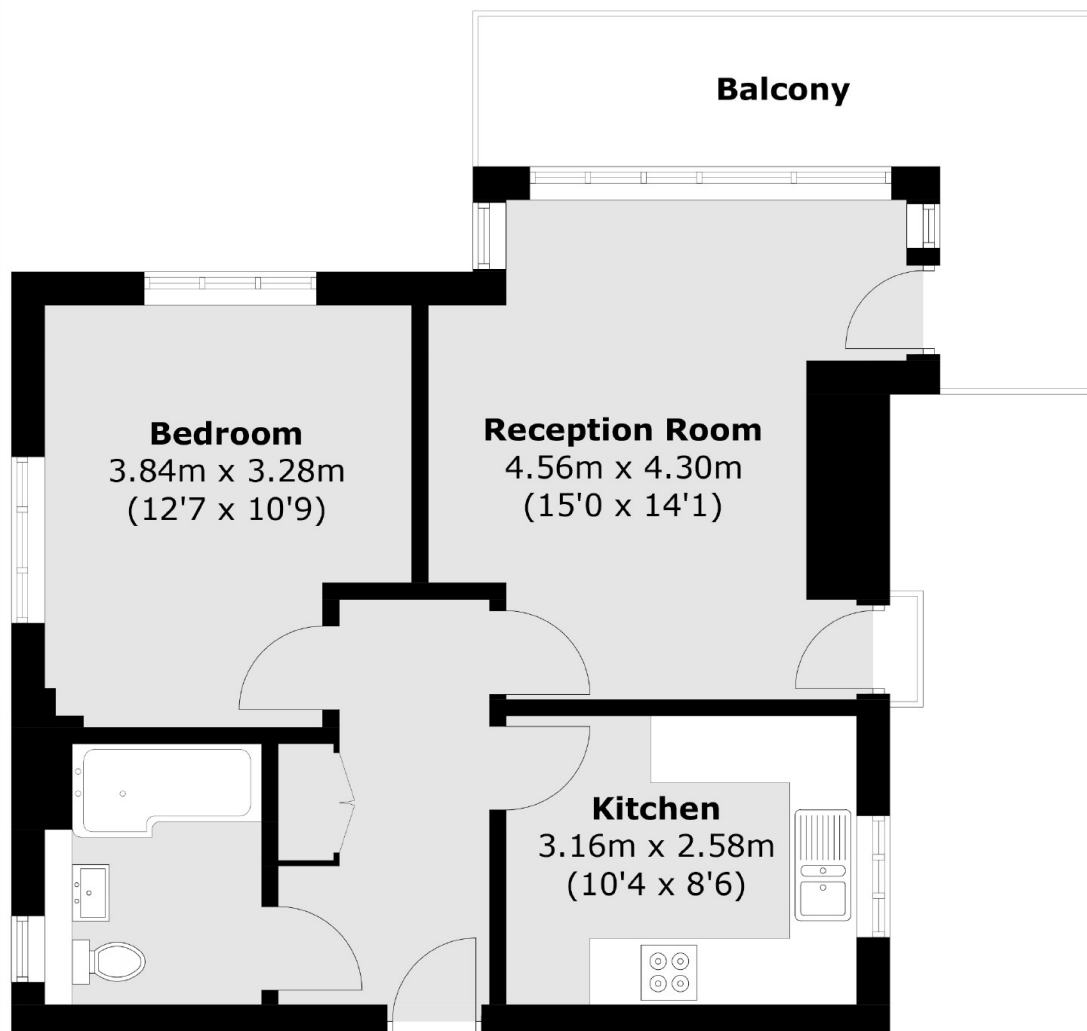
An exceptional modern apartment in immaculate condition throughout offering 538 Sq Ft of living space with a large 108 Sq Ft private Wrap around balcony. There is a large double bedroom, generous reception, contemporary kitchen and newly fitted bathroom.

Odell Walk is conveniently located for both Lewisham and Ladywell Village with Lewisham market and shopping centre moments away. Well positioned for Lewisham train and DLR stations with easy commute into London Bridge, London Victoria and Canary Wharf.

Features

- Double Bedroom
- Generous Reception
- Modern Throughout
- 108 Sq Ft Wrap Around Balcony
- Abundant Natural Light
- Close To Stations

Odell Walk, London, SE13



Total area (approx.): 50.0 sq. m (538.2 sq. ft)
Balcony (approx.): 10.1 sq. m (108.7 sq. ft)