



Loampit Vale, SE13

£425,000

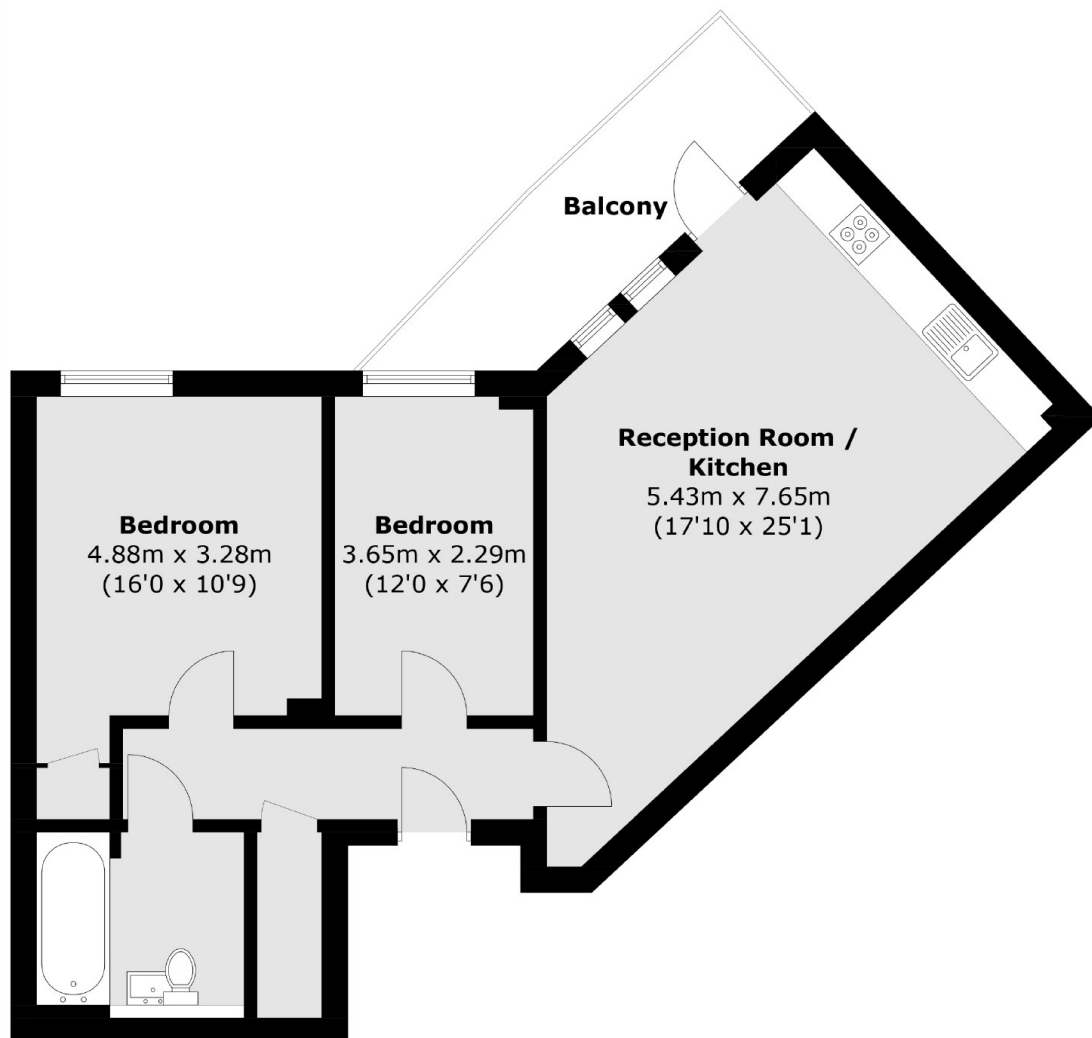
A two bedroom apartment on the third floor of Centralis House with a communal garden. This open plan, lateral flat has a good size balcony with far reaching views over Ladywell.

Loampit Vale is conveniently located for both Lewisham and Ladywell Village with Brockley Market moments away. Well positioned for both St Johns and Lewisham train stations with easy commute into London Bridge and Canary Wharf.

Features

- Two Double Bedrooms
- Sizeable Balcony
- Communal Garden
- Lift Access
- Secure Bike Storage
- Chain Free

Loampit Vale, London, SE13



Third Floor

Total area (approx.): 63.1 sq. m (679.2 sq. ft)
(Excluding Balcony: 7.8 sq. m (83.9 sq. ft))