



Whitburn Road, SE13

£700,000

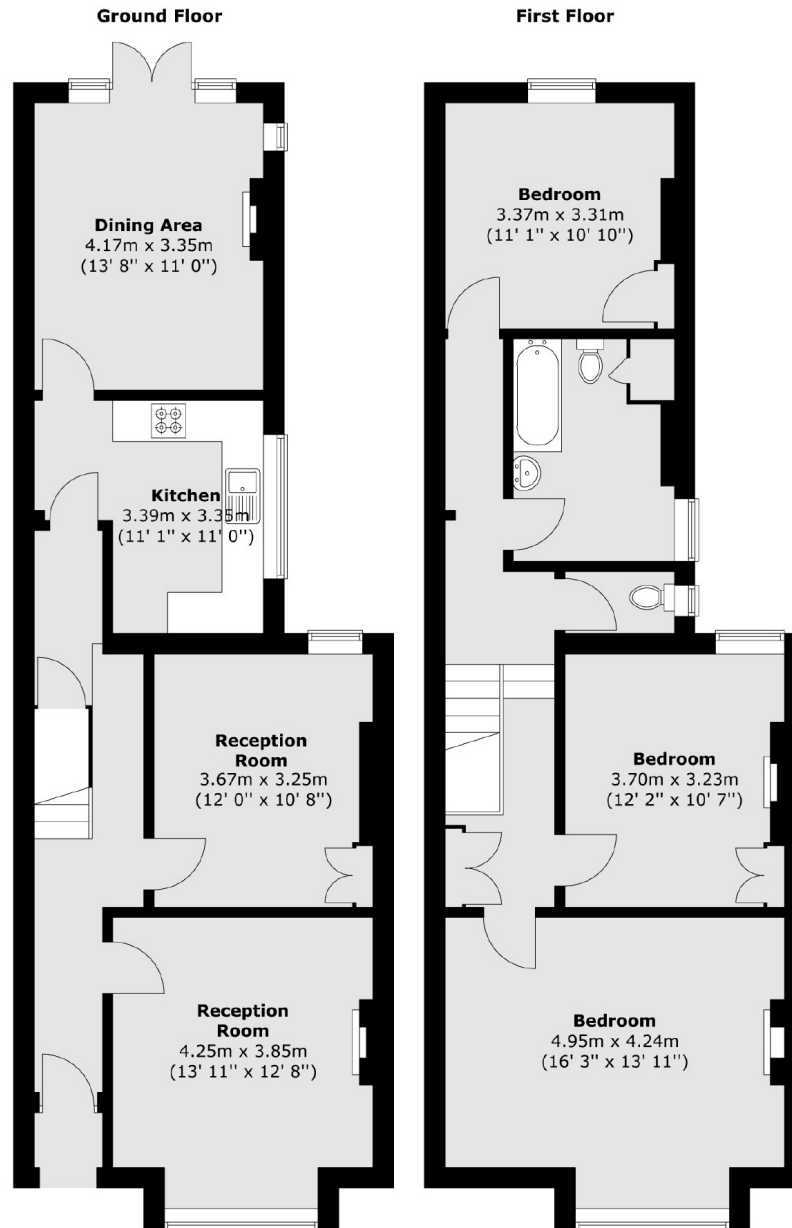
An incredible opportunity to fully renovate an end of terrace Edwardian family home measuring 1,399 Sq Ft. There are three bedrooms, a large reception room, kitchen/diner leading to a south east facing garden and sold with no onward chain.

Whitburn Road is located a short walk from Ladywell station allowing quick and easy access into central London. In addition, Lewisham DLR is within easy reach for services into Canary Wharf. The amenities of Ladywell Village and Lewisham High Street are also located just around the corner.

Features

- End Of Terrace
- Edwardian
- Three Double Bedrooms
- Large Reception
- Chain Free
- 1,399 Sq Ft

Whitburn Road, London, SE13



Total area (approx.) : 130 sq. m (1399 sq. ft)