



Darfield Road, SE4

£350,000

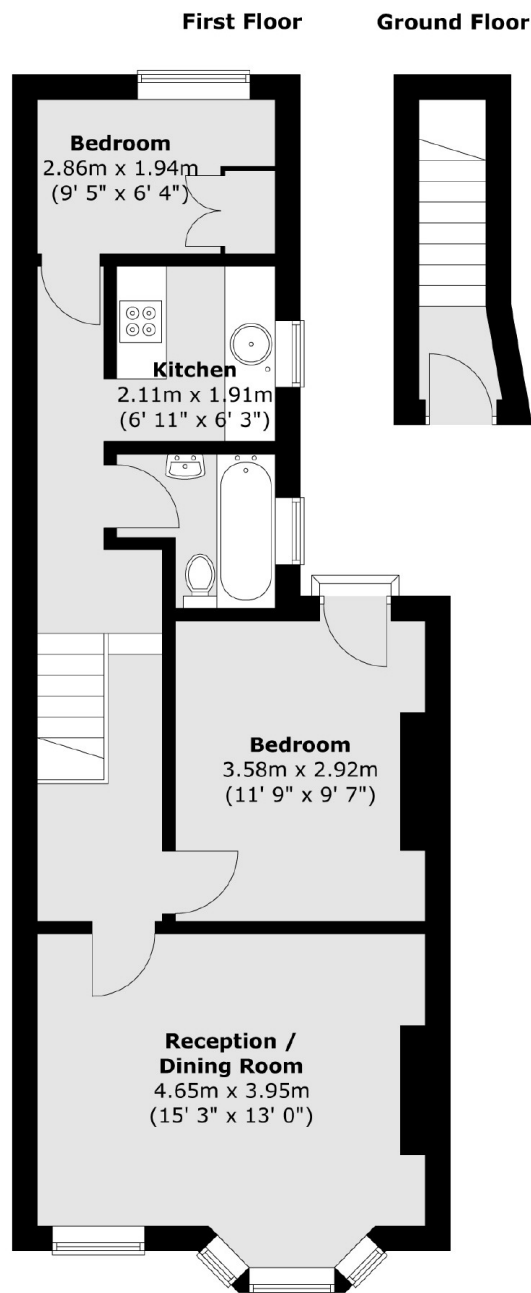
A well presented Victorian conversion measuring 598 Sq Ft favourably positioned moments from Crofton Park station. There is a double bedroom with a Juliette balcony, a versatile second bedroom, a large reception room and three piece bathroom suite.

Darfield Road is conveniently located for Crofton Park station and the open spaces of Hilly Fields and Brockley Cemetery. The great independent cafés and shops of Crofton Park are also on your door step.

Features

- Two Bedrooms
- Juliette Balcony
- Period Conversion
- Large Reception
- Close To Station
- 598 Sq Ft

Darfield Road, London, SE4



Total area (approx.) : 55.6 sq. m (598 sq. ft)