



Tyrwhitt Road, SE4

£1,900,000

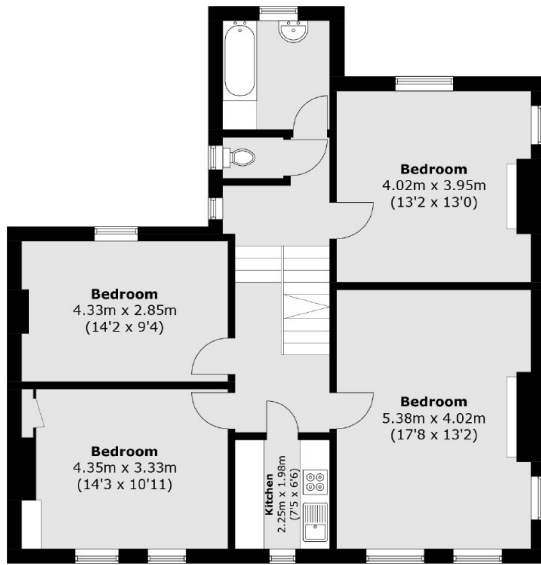
An impressive seven bedroom double fronted semi-detached house measuring in excess of 3,150 sq ft. There is a large west facing garden with a separate garage for off street parking.

Tyrwhitt Road is an attractive tree lined street located in the Brockley Conservation area with transport links from Brockley and Crofton Park train stations.

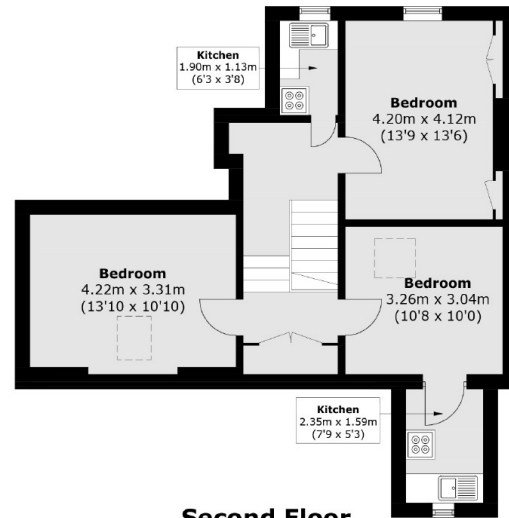
Features

Victorian House
Seven Bedrooms
3159 Sq Ft
Garage
Large West Facing Garden
Period Features

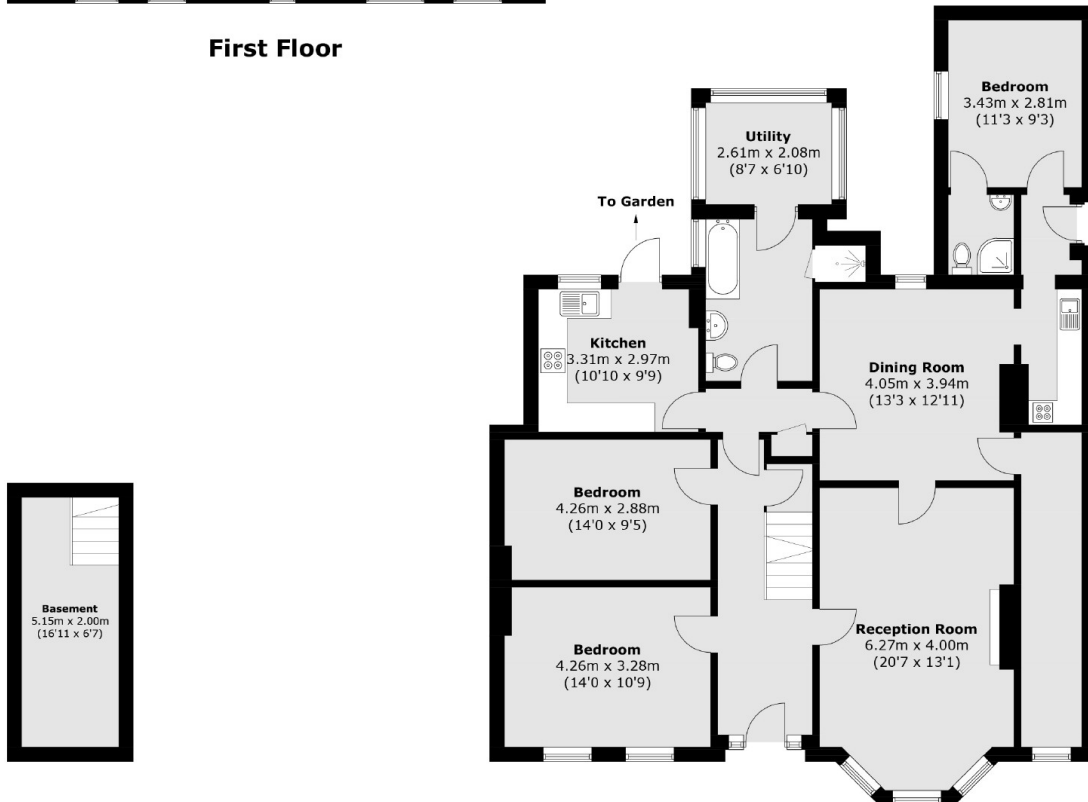
Tyrwhitt Road, London, SE4



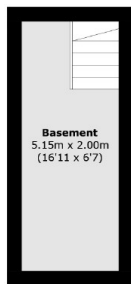
First Floor



Second Floor



Ground Floor



Basement

Total area (approx.): 293.5 sq. m (3,159.3 sq. ft)
(Including Basement)