



Farley Road, SE6

£310,000

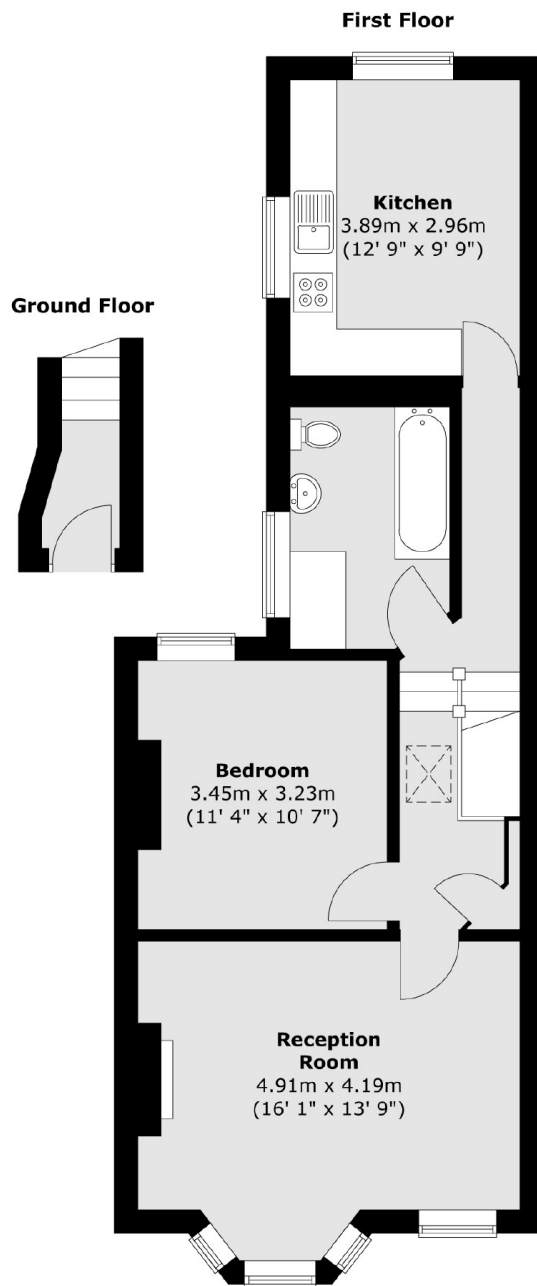
A top floor double bedroom period conversion in excessive of 640 Sq Ft well positioned moments from Mountsfield Park.

Farley Road is a quiet residential road close to Hither Green, Ladywell and Catford stations with frequent service into London and the City.

Features

- Double Bedroom
- Large Reception Room
- Modernisation Potential
- Victorian Conversion Flat
- Top Floor Flat
- Excellent Transport Links

Farley Road, London, SE6



Total area (approx.) : 59.8 sq. m (644 sq. ft)