



£400,000

🔑 TENURE: Freehold

📊 EPC RATING: B

💷 COUNCIL TAX BAND: C

## Stafford

Dewsbury Crescent  
Stafford Staffordshire



***This spacious family home offers well proportioned rooms with flexible living accommodation and having been finished to a high standard throughout, you will not be disappointed.***

The internal accommodation comprises a large and airy entrance hallway which has access to the large contemporary kitchen/diner, leading to utility room, bay fronted lounge with French doors on to the rear garden, guest WC and study. To the first floor there are four generous sized bedrooms and a family bathroom, with the master bedroom having fitted double wardrobes and an en-suite shower room. Externally the property has a private rear garden laid mainly to lawn with gated access from the driveway. In addition, the property benefits from a tandem driveway and single detached garage to the side of the property. The property is sold with its remaining NHBC warranty, continuing to provide the new build promise satisfaction and is located just a short drive into Stafford Town Centre and mainline railway station, as well as within walking distance to the local park and amenities.

- Double Fronted Detached Home
- Spacious Dining Kitchen & Utility Room
- Lounge & Study
- 4 Bedrooms, En-Suite & Family Bathroom
- Driveway & Brick Built Garage
- Corner Plot With Enclosed Rear Garden

You can reach us **9am to 9pm**, 7 days a week

14 Salter Street, Stafford, Staffordshire, ST16 2JU

**01785 223344**

hello@dourishandday.co.uk





**Entrance Hallway** 13' 0" x 8' 1" (3.97m x 2.46m)

A spacious and light entrance hallway, radiator, telephone point, built in cloaks cupboard and stairs off to the first floor landing. Providing access to the Kitchen/Dining room, Utility, Lounge, Guest W/C and Study.

**Lounge** 16' 0" x 11' 9" (4.88m x 3.58m)

A light lounge having French doors leading to the rear garden, two radiators and bay window to the side elevation.

**Guest WC** 6' 5" x 3' 1" (1.96m x 0.95m)

Comprising low level W.C, pedestal wash hand basin, splash back tiling, side elevation window and radiator.

**Kitchen/Dining Room** 20' 3" x 12' 7" (6.17m x 3.84m)

Modern and contemporary fitted kitchen, comprising wall mounted units. Integrated wall mounted gas condensing boiler. Work top incorporating an AEG six ring gas hob with stainless steel extractor over and a 1 1/2 bowl stainless steel, integrated AEG fridge/freezer. Integrated eye level AEG double oven, AEG dishwasher. A large amount of space for a large dining table or family seating area, With a bay window to the front aspect and two radiators.



You can reach us **9am to 9pm**, 7 days a week

14 Salter Street, Stafford, Staffordshire, ST16 2JU

**01785 223344**

[hello@dourishandday.co.uk](mailto:hello@dourishandday.co.uk)

## **Utility** 7' 4" x 5' 6" (2.24m x 1.68m)

Comprising matching contemporary style wall mounted units, work top, radiator, stainless steel sink, base unit, washing machine and space for a tumble dryer and door to the rear garden.

## **Study** 8' 0" x 7' 8" (2.45m x 2.34m)

A room with flexible usage for example a gymnasium, play room or study, telephone point and radiator.

## **First Floor Landing**

Having access to loft space, radiator and airing cupboard.

## **Master Bedroom** 11' 10" x 9' 2" (3.60m x 2.79m)

Having a range of fitted double height double wardrobes with mirrored doors, two radiators, duel aspect windows and door to the en-suite.

## **En-suite/Shower Room** 4' 9" x 7' 0" (1.45m x 2.14m)

Comprising of a double ceramic tiled shower cubicle, pedestal wash hand basin, low level WC, heated towel radiator, splash back tiling and extractor fan side elevation window.

## **Bedroom Two** 17' 2" x 9' 3" (5.23m x 2.83m)

A good sized double room having a built in cupboard, radiator and two double glazed windows to the front elevation.

## **Bedroom Three** 14' 8" x 8' 0" (4.46m x 2.44m)

A third double room having radiator and built in cupboard, with front and side elevation windows.

## **Bedroom Four** 9' 5" x 10' 8" (2.87m x 3.26m)

A good sized bedroom, having a radiator and double glazed window to the rear elevation.

## **Family Bathroom** 9' 7" x 6' 4" (2.93m x 1.93m)

Comprising a double end panelled bath, low level WC, pedestal wash hand basin, double ceramic tiled shower cubicle, splashback tiling, rear elevation window, extractor fan and heated towel radiator.

## **Outside**

The home is located on a corner plot having a lawned front garden with low height hedge row which extends to the side of the house along with the lawned garden. There is a driveway adjacent to the side lawn which provides ample off road parking and leads to a single brick built garage with gate to the rear garden. The enclosed rear garden is mainly laid to lawn with paved patio adjacent to the home and tall wall side garden boundary. Fitted to the rear of the house is an outside water tap.

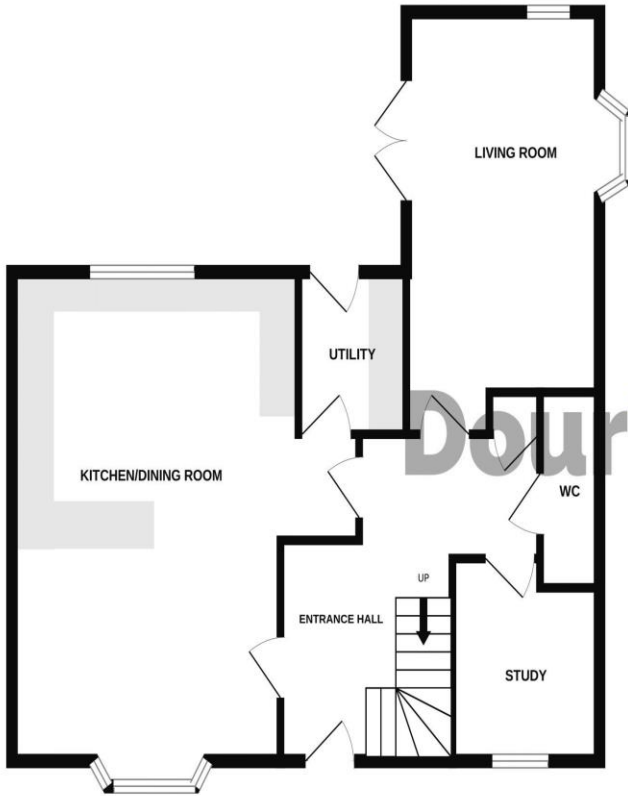
## **Garage**

A single detached garage positioned to the rear of the garden on a Winton Vale and has an up and over door, power and lighting.

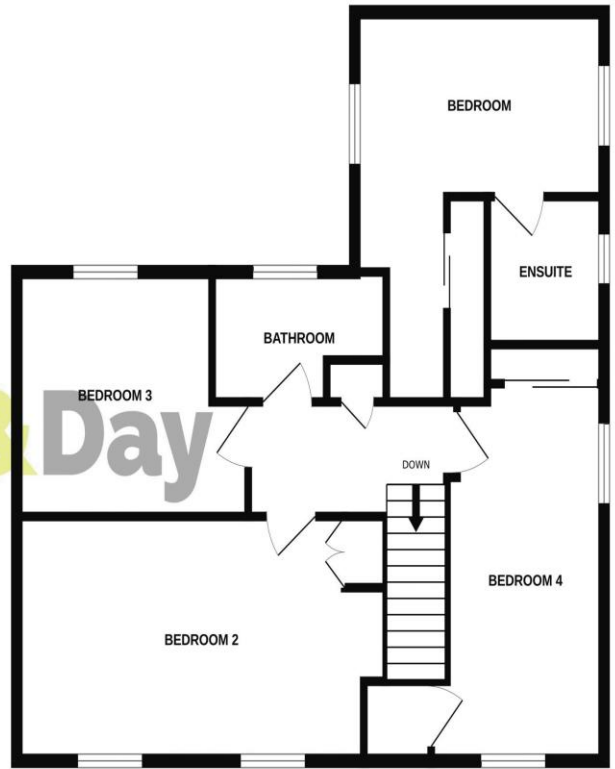




GROUND FLOOR



1ST FLOOR



Whilst every attempt has been made to ensure the accuracy of the floorplan contained here, measurements of doors, windows, rooms and any other items are approximate and no responsibility is taken for any error, omission or mis-statement. This plan is for illustrative purposes only and should be used as such by any prospective purchaser. The services, systems and appliances shown have not been tested and no guarantee as to their operability or efficiency can be given.

Made with Metropix ©2024

Score	Energy rating	Current	Potential
92+	A		93 A
81-91	B		
69-80	C		
55-68	D		
39-54	E		
21-38	F		
1-20	G		



**IMPORTANT NOTICE** Dourish & Day for themselves and for the vendor or lessors of this property whose agents they are given notice that: (i) the particulars are set out as a general outline only for the guidance of intending purchasers or lessees, and do not constitute, nor constitute part of, an offer of contract, (ii) all descriptions, dimensions, references to condition and necessary permissions for use and occupation, and other details are given in good faith and are believed to be correct but any intending purchasers or tenants should not rely on them as statement or representation of fact but must satisfy themselves by inspection or otherwise as to the correctness of each of them, (iii) no person in the employment of Dourish & Day has any authority to make or give any representation or warranty whatever in relation to this property.

You can reach us **9am to 9pm, 7 days a week**

14 Salter Street, Stafford, Staffordshire, ST16 2JU

**01785 223344**

hello@dourishandday.co.uk