



£895,000

🔑 TENURE: Freehold

📊 EPC RATING: C

💷 COUNCIL TAX BAND: F

Stowe-By-Chartley Stafford

Station Road Stowe-By-Chartley
Stafford Staffordshire



What a delightful opportunity awaits you! Presenting this exquisite four-bedroom cottage, nestled in the highly desirable village of Stowe-by-Chartley.

This enchanting home is filled with character and charm, offering a warm and inviting entrance hall, a cosy living room, a spacious conservatory with panoramic garden views, a formal dining room, a unique piano room, a generous kitchen/breakfast area, and a convenient guest WC—all on the ground floor. Ascend to the first floor, where you'll find four spacious double bedrooms, including a master with an ensuite and a well-appointed family bathroom. Each room exudes a sense of tranquillity and comfort, perfect for creating cherished family memories. Externally, the property is set on an expansive plot, featuring meticulously landscaped gardens that include a tennis court, a charming orchard, and a productive vegetable patch. The gardens offer stunning views of the surrounding rural countryside, providing a serene backdrop for relaxation and outdoor activities. This property is truly a gem, combining the allure of classic cottage charm with modern comforts. Don't miss the chance to fall in love with this unique and beautiful home. Call us today to arrange your viewing!

- Beautiful Four Bedroom Characterful Home
- Living Room, Conservatory & Piano Room
- Large Kitchen, Dining Room
- Four Bedrooms, Ensuite & Family Bathroom
- Large Spacious Gardens, Orchard & Tennis Court
- Located In A Highly Desirable Village

You can reach us 9am to 9pm, 7 days a week

14 Salter Street, Stafford, Staffordshire, ST16 2JU

01785 223344

hello@dourishandday.co.uk



Entrance Hallway

Accessed through a barn style entrance door to the front elevation and having, wood flooring and a radiator.

Guest WC 5' 11" x 6' 8" (1.80m x 2.03m)

Having a white suite comprising of a pedestal wash basin and low-level WC. There is space for plumbed appliances, a wall mounted gas central heating boiler, wood flooring, a chrome towel radiator and a double glazed window to the front elevation.

Sitting Room 18' 9" x 11' 11" (5.71m x 3.62m)

A spacious room and having, open staircase leading up to the first floor landing, Engineered oak flooring, a radiator and a double glazed window to the front elevation.

Living Room 14' 9" x 11' 11" (4.49m x 3.63m)

A bright & spacious living room having a multi-fuel cast-iron stove set within the chimney breast on a stone hearth. There is Engineered oak



You can reach us **9am to 9pm**, 7 days a week

14 Salter Street, Stafford, Staffordshire, ST16 2JU

01785 223344

hello@dourishandday.co.uk

flooring, a radiator and double glazed windows to both the front & rear elevations.

Conservatory 15' 11" x 12' 3" (4.85m x 3.73m)

Accessed from the living room through double glazed double doors. The brick based conservatory features double glazed windows & doors to the surrounds which consists of Argon gas filled double glazed panels and having, tiled flooring with electric under floor heating, panelled radiator, and double glazed double doors which lead out onto the rear garden.

Piano Room 10' 5" x 11' 8" (3.18m x 3.55m)

A versatile room which features exposed oak wooden window frames & underfloor heating. Engineered oak flooring, double glazed windows enjoying views of the private & enclosed rear garden, and double glazed door providing access to/from the kitchen.

Kitchen 28' 0" x 11' 11" (8.54m x 3.64m)

A substantial kitchen which features a matching range of fitted wall, base & drawer units with fitted granite countertops incorporating an inset composite sink/drainage unit with chrome mixer tap over. There is a range of built-in cooking appliances including a built-in oven/grill, electric hob with cooker hood over, microwave oven, fridge/freezer & dishwasher. There is ceramic splashback tiling to the wall surface areas, tiled flooring, a panelled radiator and a double glazed window to the side elevation. There are downlights and a double glazed stable rear door.

First Floor Landing

Having access to the loft space and internal doors off providing access to all bedrooms & bathroom.

Bedroom One (Dressing Area) 6' 5" x 11' 11" (1.95m x 3.62m)

Providing access to the bedroom, walking through there is a built-in double wardrobe.

Bedroom One 12' 1" x 14' 10" (3.69m x 4.52m)

A spacious double bedroom and having, additional access to loft space, a radiator and double glazed windows to both the side & rear elevations.

En-suite (Bedroom One) 5' 10" x 5' 11" (1.79m x 1.80m)

Fitted with a white suite comprising of a low-level WC, wash hand basin set into top with chrome mixer tap over & storage beneath and a ceramic tiled walk-in shower cubicle housing a mains shower. There are downlights, a double glazed window to the rear elevation, chrome towel radiator and having, ceramic splashback tiling to the wall surfaces & vinyl flooring.





Bedroom Two 8' 7" x 11' 11" (2.62m x 3.63m)

A second double bedroom, having a built-in storage cupboard, radiator and a double glazed window to the front elevation.

Bedroom Three 11' 1" x 8' 9" (3.38m x 2.66m)

A third double bedroom, again featuring a built-in cupboard, a radiator and a double glazed window to the front elevation, with through access to bedroom two.

Bedroom Four 10' 2" x 12' 0" (3.11m x 3.65m)

A fourth double bedroom which features double glazed windows to both the side & rear elevations and having, a radiator.



You can reach us **9am to 9pm**, 7 days a week

14 Salter Street, Stafford, Staffordshire, ST16 2JU

01785 223344

hello@dourishandday.co.uk

Bathroom 7' 2" x 8' 5" (2.19m x 2.56m)

Fitted with a white suite comprising of a low-level WC, a pedestal wash hand basin with chrome taps, and a panelled bath with chrome taps, shower over & screen to side. There is a matching bidet, tiled walls, a radiator, downlights and a double glazed window to the side elevation.

Externally & Grounds

Accessed through electric double width gates over a driveway providing access to the property & double garage. There is a large block paved outdoor seating & entertaining area which surrounds the property onto a large lawned garden. The grounds also comprise of a Tennis Court, an Orchard, vegetable growing area with an adjoining greenhouse. There is a further large area of cut lawned garden providing additional outdoor garden entertaining. The gardens also feature an array of established flowerbeds, plants, shrubs & trees. The garden is well-presented and maintained throughout and a great feature of the home.

Double Garage 18' 6" x 17' 0" (5.63m x 5.18m)

A double garage which features two levels and accessed via a double width electronically operated up and over garage door to the front elevation. Inside, there is a staircase providing access to the first floor of the garage which provides a large & useful additional storage area. The garage also benefits from having both power & lighting installed and double glazed windows overlooking the garden.

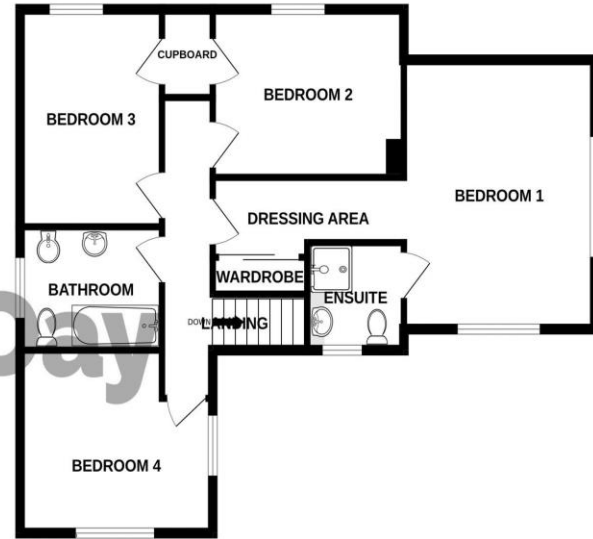
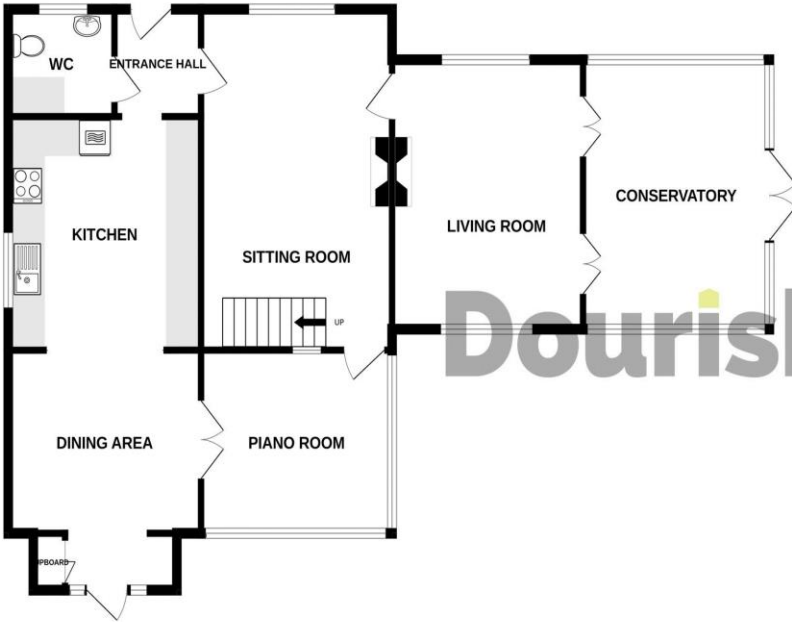
Workshop 16' 3" x 12' 3" (4.96m x 3.74m)

A versatile and useful space featuring an electronically operated up and over garage door to the front elevation, benefitting from both power & lighting and again, having windows overlooking the garden.



GROUND FLOOR

1ST FLOOR



Whilst every attempt has been made to ensure the accuracy of the floorplan contained here, measurements of doors, windows, rooms and any other items are approximate and no responsibility is taken for any error, omission or mis-statement. This plan is for illustrative purposes only and should be used as such by any prospective purchaser. The services, systems and appliances shown have not been tested and no guarantee as to their operability or efficiency can be given.
Made with Metropix ©2024

Score	Energy rating	Current	Potential
92+	A		
81-91	B		87 B
69-80	C		80 C
55-68	D		
39-54	E		
21-38	F		
1-20	G		



IMPORTANT NOTICE Dourish & Day for themselves and for the vendor or lessors of this property whose agents they are given notice that: (i) the particulars are set out as a general outline only for the guidance of intending purchasers or lessees, and do not constitute, nor constitute part of, an offer of contract, (ii) all descriptions, dimensions, references to condition and necessary permissions for use and occupation, and other details are given in good faith and are believed to be correct but any intending purchasers or tenants should not rely on them as statement or representation of fact but must satisfy themselves by inspection or otherwise as to the correctness of each of them, (iii) no person in the employment of Dourish & Day has any authority to make or give any representation or warranty whatever in relation to this property.

You can reach us **9am to 9pm**, 7 days a week

14 Salter Street, Stafford, Staffordshire, ST16 2JU

01785 223344

hello@dourishandday.co.uk