



£420,000

🔑 TENURE: Freehold

📊 EPC RATING: D

💷 COUNCIL TAX BAND: D

Hillcroft Park Stafford

Brean Road Hillcroft Park
Stafford Staffordshire



This superb extended detached home might be just what you're looking for, and it offers excellent value for the asking price! Situated in a highly sought-after area, it is within walking distance to reputable schools and amenities, and only a short bike ride away from the beautiful Cannock Chase.

The interior features an entrance porch, hallway, guest WC, living room, sitting/dining room, and a kitchen/dining room. Upstairs, you'll find a modern family bathroom and four generously sized bedrooms. Outside, the property includes a block-paved driveway, a single garage, and a spacious, private, well-established landscaped rear garden.

- Extended Detached Family Home
- Living Room & Sitting/Dining Room
- Large Kitchen/Dining Room
- Four Bedrooms, Family Bathroom & Guest WC
- Block Paved Driveway & Single Garage
- Landscaped Private Established Garden

You can reach us **9am to 9pm**, 7 days a week

14 Salter Street, Stafford, Staffordshire, ST16 2JU

01785 223344

hello@dourishandday.co.uk



Entrance Porch

Accessed through a double glazed entrance door with full-height double glazed panels, having a radiator, tiled flooring and further opaque glazed internal door leading into the entrance hallway.

Entrance Hallway

A welcoming entrance hallway, having stairs off, rising to the first floor landing & accommodation and a radiator.

Guest WC 2' 7" x 6' 9" (0.80m x 2.07m)

Fitted with a contemporary suite comprising of a low-level WC & wash hand basin with tiled splashbacks. The room also features marble effect tiled flooring and a double glazed window to the side elevation.

Living Room 19' 0" x 11' 7" (5.79m x 3.54m) maximum room measurements

An extended, bright & spacious reception room that features a living flame gas fire set within a decorative surround with a marble effect hearth. There is also a radiator and a double glazed window to the front elevation.

Sitting/Dining Room 11' 7" x 11' 8" (3.53m x 3.55m)

A second good sized reception room, having a radiator and a double glazed sliding door leading out onto the rear garden patio area.

Kitchen & Dining Space 16' 2" x 12' 8" (4.93m x 3.85m)

A large extended kitchen featuring an array of wall, base & drawer units with under-counter lighting & fitted worktops which incorporate an inset stainless steel sink/drainer with mixer tap, whilst also having an integrated fridge & integrated



You can reach us **9am to 9pm**, 7 days a week

14 Salter Street, Stafford, Staffordshire, ST16 2JU

01785 223344

hello@dourishandday.co.uk

dishwasher & space for a Range style cooker with existing wide stainless steel extractor hood above.

First Floor Landing

Having a double glazed opaque window to the side elevation & radiator.

Bedroom One 12' 4" x 11' 10" (3.76m x 3.61m)

A double bedroom, with a radiator and a double glazed window to the front elevation.

Bedroom Two 11' 9" x 9' 8" (3.57m x 2.95m)

A second double bedroom with a radiator and a double glazed window to the rear elevation.

Bedroom Three 9' 4" x 12' 8" (2.85m x 3.86m)

A third double bedroom, with a radiator and a double glazed window to the front elevation.

Bedroom Four 8' 5" x 6' 7" (2.57m x 2.0m)

Having a fitted wardrobe, airing cupboard, further built-in cupboard, a radiator and a double glazed window to the rear elevation.

Bathroom 8' 6" x 6' 0" (2.58m x 1.82m)

Fitted with a contemporary suite comprising of a low-level WC, a wash hand basin set into top with mixer tap over, a tiled shower cubicle with mains shower and a panelled bath with mixer tap. The room also benefits from recessed downlights, tiled flooring, a chrome towel radiator, and a double glazed opaque window to the rear elevation.

Outside Front

The property is approached over a large block paved driveway and occupies a lovely plot. The driveway provides off-street vehicle parking and access to the garage and main entrance door to the front elevation. To the side of the driveway is lawned foregarden with a variety of established planting beds.

Garage 16' 11" x 8' 11" (5.16m x 2.71m)

Having an up and over garage door to the front elevation, a pedestrian door to the rear elevation & double glazed window to the side elevation. The garage also benefits from having both power & lighting installed and also features plumbing for a washing machine.

Outside Rear

A beautifully presented & well established, enclosed rear garden that features an excellent degree of privacy and consists of an outdoor paved patio seating & entertaining area which leads onto a shaped lawned garden with an array of established planting beds and also an apple tree.

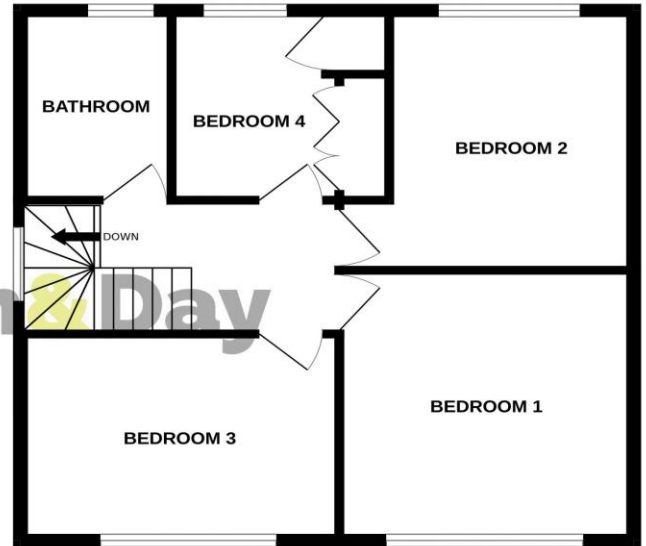
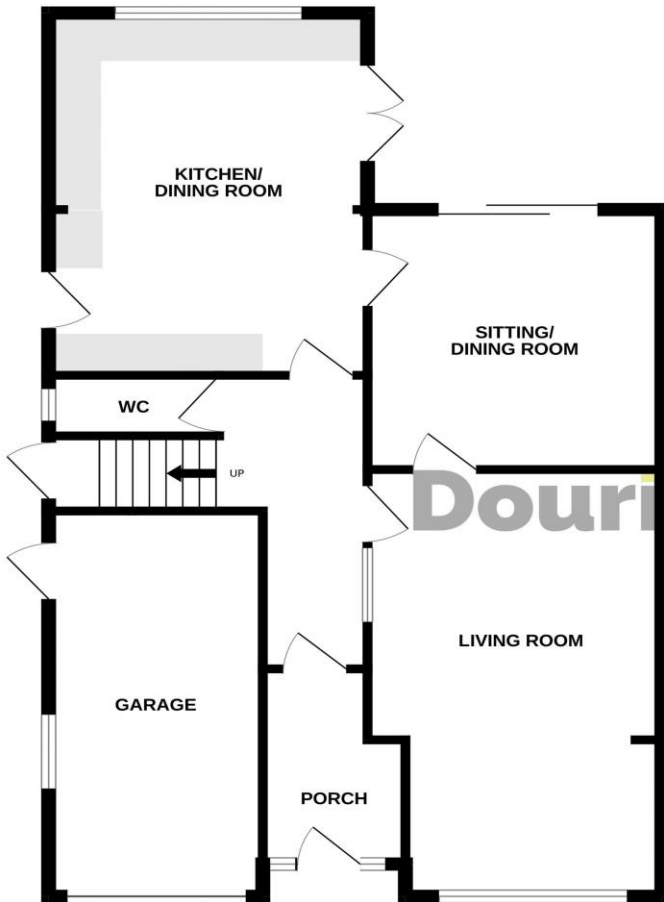
ID Checks

Once an offer is accepted on a property marketed by Dourish & Day estate agents we are required to complete ID verification checks on all buyers and to apply ongoing monitoring until the transaction ends. Whilst this is the responsibility of Dourish & Day we may use the services of MoveButler, to verify Clients' identity. This is not a credit check and therefore will have no effect on your credit history. You agree for us to complete these checks, and the cost of these checks is £30.00 inc. VAT per buyer. This is paid in advance, when an offer is agreed and prior to a sales memorandum being issued. This charge is non-refundable.



GROUND FLOOR

1ST FLOOR



Dourish & Day

Score	Energy rating	Current	Potential
92+	A		
81-91	B		
69-80	C		
55-68	D	63 D	78 C
39-54	E		
21-38	F		
1-20	G		

Whilst every attempt has been made to ensure the accuracy of the floorplan contained here, measurements of doors, windows, rooms and any other items are approximate and no responsibility is taken for any error, omission or mis-statement. This plan is for illustrative purposes only and should be used as such by any prospective purchaser. The services, systems and appliances shown have not been tested and no guarantee as to their operability or efficiency can be given.
Made with Metropix ©2024



IMPORTANT NOTICE Dourish & Day for themselves and for the vendor or lessors of this property whose agents they are given notice that: (i) the particulars are set out as a general outline only for the guidance of intending purchasers or lessees, and do not constitute, nor constitute part of, an offer of contract, (ii) all descriptions, dimensions, references to condition and necessary permissions for use and occupation, and other details are given in good faith and are believed to be correct but any intending purchasers or tenants should not rely on them as statement or representation of fact but must satisfy themselves by inspection or otherwise as to the correctness of each of them, (iii) no person in the employment of Dourish & Day has any authority to make or give any representation or warranty whatever in relation to this property.

You can reach us **9am to 9pm**, 7 days a week

14 Salter Street, Stafford, Staffordshire, ST16 2JU

01785 223344

hello@dourishandday.co.uk