



£245,000

KEY TENURE: Freehold

≡ EPC RATING: D

£ COUNCIL TAX BAND: B

## Stafford

131 Corporation Street  
Stafford Staffordshire ST16 3LS



***Are you looking for a spacious, late Victorian, four bedroom, bay front terraced home with bags of character and only a short walk into Stafford Town Centre's comprehensive range of shops, amenities, restaurants and mainline line railway station for the daily commuter?***

Look no further, Dourish & Day have you covered! This deceptively large and well presented home would suite a variety of buyers and internally comprises of a storm porch, large entrance hallway with the original Minton tiled floor, living room, dining room and fitted kitchen. To the first floor there are four good sized bedrooms and a family bathroom. Externally the property has a forecourt, secure double width driveway to the rear and rear garden with large garden shed and garden store.

- Spacious Four Bedroom Victorian Property
- Large Entrance Hallway & Living Room
- Dining Room & Fitted Kitchen
- Secure Parking To The Rear & Garden
- Close To Stafford Town Centre Amenities
- Walking Distance To Mainline Railway Station

You can reach us **9am to 9pm**, 7 days a week

14 Salter Street, Stafford, Staffordshire, ST16 2JU

**01785 223344**

hello@dourishandday.co.uk



## Storm Porch

Being accessed through a double glazed door and having a tiled floor and further double glazed door leading to:

## Entrance Hall

A substantial entrance hall having a stunning, original Minton tiled floor, original coving, feature arch, radiator, stairs leading to the first floor landing with understairs storage cupboard.

## Lounge 14' 7" into bay x 12' 4" (4.44m into bay x 3.76m)

A spacious lounge having the original coving, pine fire surround with cast iron inset and granite tiled hearth with open fire grate. Radiator and double glazed walk-in bay window to the front elevation.

## Dining Room 12' 1" inc recess x 11' 0" (3.69m inc recess x 3.35m)

A spacious second reception room having fitted shelving and storage cupboards built into the chimney recess, art nouveau style fire surround housing an open fire grate with a tiled hearth. Wood effect laminate floor, radiator, coving, dado rail and double glazed window to the rear elevation.



You can reach us **9am to 9pm**, 7 days a week

14 Salter Street, Stafford, Staffordshire, ST16 2JU

**01785 223344**

[hello@dourishandday.co.uk](mailto:hello@dourishandday.co.uk)

## **Kitchen** 13' 6" x 8' 8" (4.11m x 2.65m)

Having a range of matching units extending to base and eye level and fitted work surfaces with an inset ceramic one and a half bowl sink drainer with brushed copper mixer tap. Range of integrated appliances including and eye level double oven/grill, four ring gas hob with cooker hood above. Further spaces for appliances, bevelled edge splashback tiling, tiled floor, radiator, two double glazed windows and double glazed door to the side elevation leading to the rear garden.

## **First Floor Landing**

Having access to a substantial loft space and radiator.

## **Bedroom One** 13' 1" x 10' 10" (3.99m x 3.31m)

Having a radiator and double glazed window to the rear elevation.

## **Bedroom Two** 13' 0" x 7' 7" (3.97m x 2.32m)

Having a radiator and double glazed window to the front elevation.

## **Bedroom Three** 10' 2" x 9' 8" (3.09m x 2.94m)

A good-sized third bedroom having a spacious storage cupboard / wardrobe, further cupboard which houses the gas central heating boiler, radiator and double glazed window to the front elevation.

## **Bedroom Four** 7' 3" x 8' 10" (2.21m x 2.69m)

Having a radiator and double glazed window to the rear elevation.

## **Family Bathroom** 7' 3" x 5' 6" (2.21m x 1.67m)

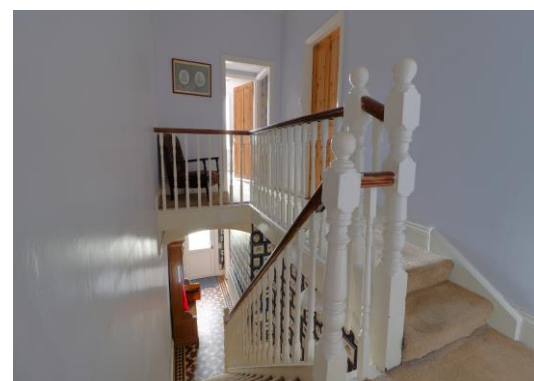
Having a suite comprising of a panelled bath with folding shower screen, traditional style chrome taps and an electric shower over, pedestal wash hand basin with traditional style chrome taps and low level WC. Wood effect flooring, radiator, tiled walls and double glazed window to the side elevation.

## **Outside - Front**

There is forecourt garden with a path leading to the property.

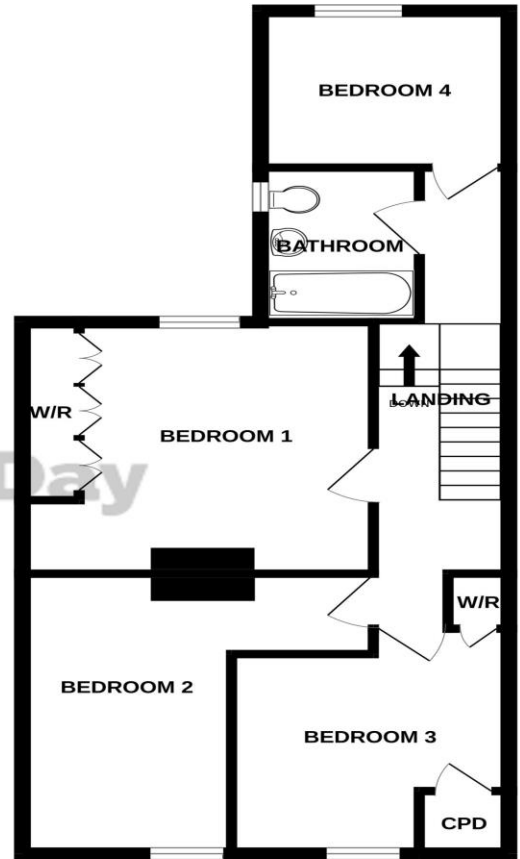
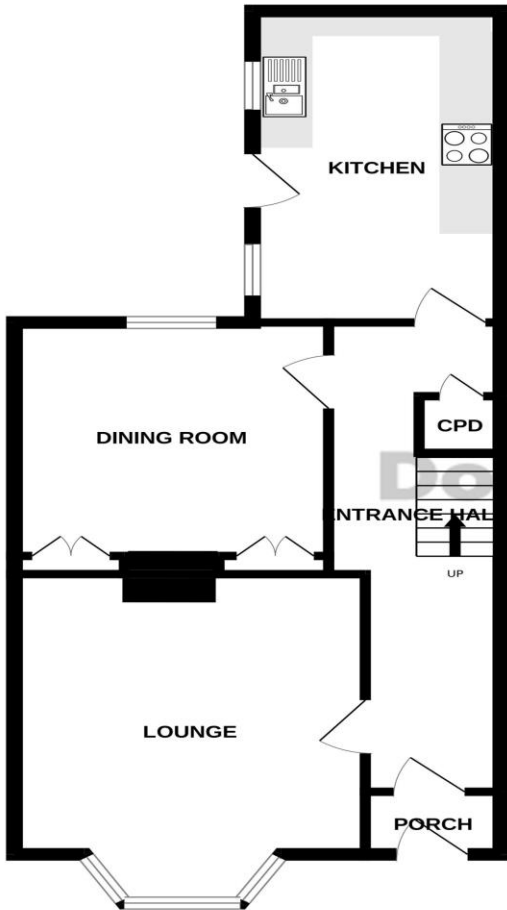
## **Outside - Rear**

The rear garden benefits from rear vehicular access and leads to a paved double width parking area and there is a paved rear garden with block paved seating area and raised vegetable bed. In addition, there is an outside garden store and garden shed both with power and lighting and there is a useful log store.



GROUND FLOOR  
559 sq.ft. (52.0 sq.m.) approx.

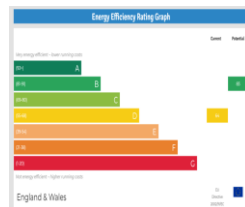
1ST FLOOR  
546 sq.ft. (50.7 sq.m.) approx.



Dourish & Day

TOTAL FLOOR AREA : 1105 sq.ft. (102.7 sq.m.) approx.

Whilst every attempt has been made to ensure the accuracy of the floorplan contained here, measurements of doors, windows, rooms and any other items are approximate and no responsibility is taken for any error, omission or mis-statement. This plan is for illustrative purposes only and should be used as such by any prospective purchaser. The services, systems and appliances shown have not been tested and no guarantee as to their operability or efficiency can be given.  
Made with MetroPix ©2024



**IMPORTANT NOTICE** Dourish & Day for themselves and for the vendor or lessors of this property whose agents they are given notice that: (i) the particulars are set out as a general outline only for the guidance of intending purchasers or lessees, and do not constitute, nor constitute part of, an offer of contract, (ii) all descriptions, dimensions, references to condition and necessary permissions for use and occupation, and other details are given in good faith and are believed to be correct but any intending purchasers or tenants should not rely on them as statement or representation of fact but must satisfy themselves by inspection or otherwise as to the correctness of each of them, (iii) no person in the employment of Dourish & Day has any authority to make or give any representation or warranty whatever in relation to this property.

You can reach us **9am to 9pm**, 7 days a week

14 Salter Street, Stafford, Staffordshire, ST16 2JU

**01785 223344**

hello@dourishandday.co.uk