



£160,000

🔑 TENURE: Leasehold 📊 EPC RATING: N/A 🏠 COUNCIL TAX BAND: A

Doxey Stafford

Castle Grange Park Doxey
Stafford Staffordshire



As the popular saying suggests, "an Englishman's home is their castle," Well, whether man or women, this outstanding park home is certain to transform into a buyer's delightful palace. Positioned at the prime spot on the list of desirable locations, this property boasts breathtaking views to the rear and a tranquil garden perfect for relaxation.

Situated within a small park exclusively for those over 55's, this well-presented home features an entrance hall, spacious living room with an adjacent study area, a modern fitted kitchen/dining room, a bathroom, and two double bedrooms—one of which includes its own ensuite shower room. Outside, a block paved driveway, lawned side and rear garden, and patio offer a low maintenance yet inviting outdoor space.

- Impressive Park Home For Over 55's
- Fantastic Rural Views
- Large Living Room with Study Room
- Modern Fitted Kitchen/Dining Room
- Two Double Bedrooms, En-Suite & Bathroom
- Block Paved Driveway & Gardens

You can reach us 9am to 9pm, 7 days a week

14 Salter Street, Stafford, Staffordshire, ST16 2JU

01785 223344

hello@dourishandday.co.uk



Entrance Hallway

Accessed through double glazed double doors, having a radiator and a useful cloaks cupboard.

Living Room 15' 1" x 14' 6" (4.60m x 4.42m)

A large & bright reception room enjoying dual-aspect views over neighbouring fields. The room features an electric fire set within a decorative surround, two radiators, and three double glazed windows.

Study 4' 1" x 5' 2" (1.25m x 1.57m)

A versatile area located off the living room, having a double glazed window, radiator, and space for a desk.

Kitchen & Dining Area 19' 5" x 11' 0" (5.91m x 3.36m)

Fitted with a modern and matching range of wall, base & drawer units with fitted work surfaces over incorporating an inset 1.5 bowl sink/drainers with chrome mixer tap, and a range of integrated/fitted appliances which include electric oven, hob with extractor above, fridge/freezer & washing machine. There is dual-aspect having double glazed windows to both the front & rear elevations, a double glazed rear door, and a radiator.



You can reach us **9am to 9pm**, 7 days a week

14 Salter Street, Stafford, Staffordshire, ST16 2JU

01785 223344

hello@dourishandday.co.uk

Inner Hallway

Having a loft access point & radiator.

Bedroom One 7' 7" x 11' 10" (2.30m x 3.60m)

A double bedroom, having a built-in double wardrobe, radiator, and double glazed bow window to the front elevation. A further internal door leads into the En-suite shower room.

En-suite (Bedroom One) 6' 9" x 6' 0" (2.07m x 1.83m) (maximum measurements)

Fitted with a white suite comprising of a low-level WC, a pedestal wash hand basin with mixer tap, and a tiled double shower cubicle fitted with a mains-fed shower. There is wood effect flooring, a radiator, and a double glazed window to the front elevation.

Bedroom Two 7' 7" x 9' 11" (2.31m x 3.02m)

A second double bedroom with a built-in wardrobe, radiator, and a double glazed window to the side elevation.

Bathroom 6' 7" x 5' 6" (2.0m x 1.68m)

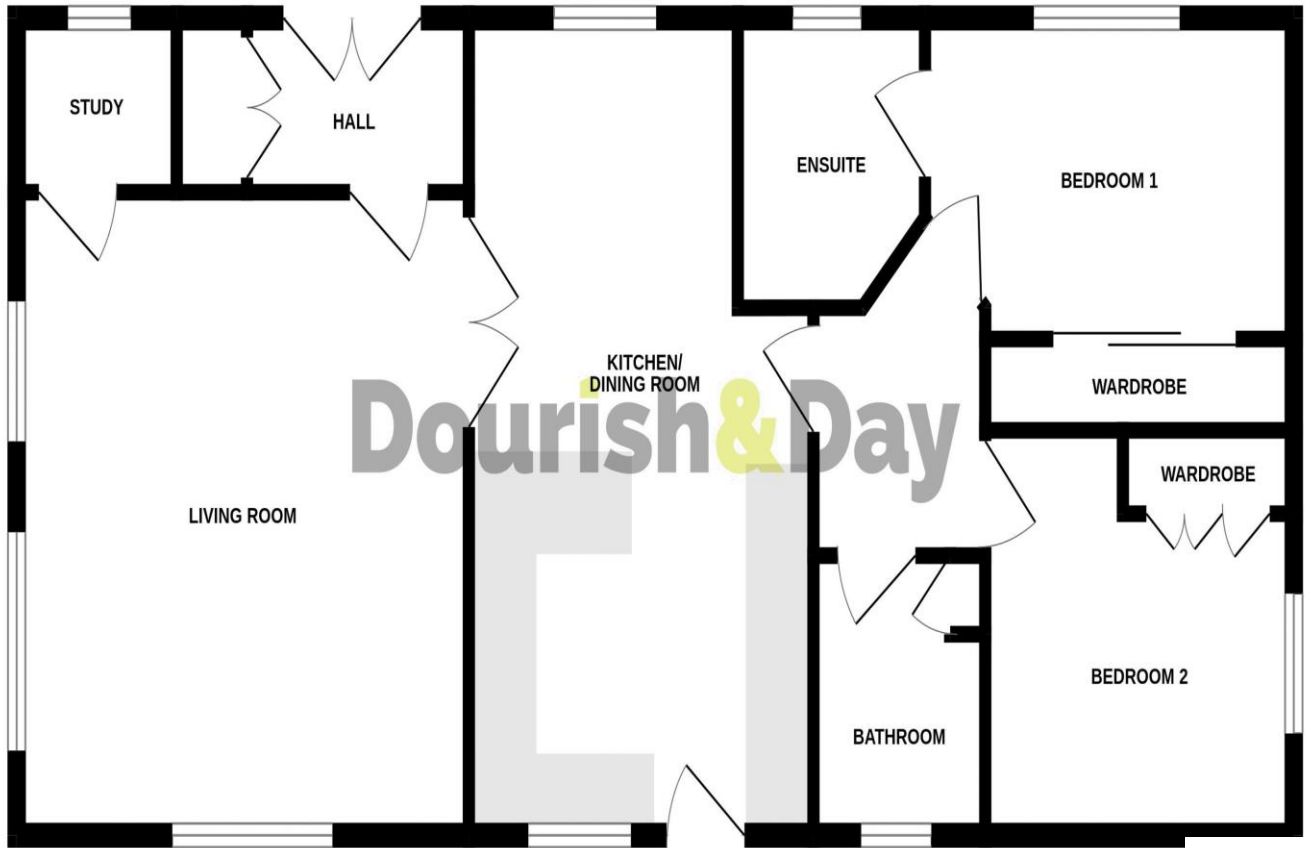
Fitted with a white suite comprising of a low-level WC, a pedestal wash hand basin with mixer tap, and a panelled bath with mixer tap. There is wood effect flooring, a useful storage cupboard, radiator, and a double glazed window to the rear elevation.

Outside Front

The home occupies a lovely plot positioned at the end of the development and is approached over a large block paved driveway which provides ample off-street parking for vehicles, whilst gardens surrounding the property are laid mainly to lawn with paved seating areas.



GROUND FLOOR



PROPERTY EXEMPT FROM AN EPC

Whilst every attempt has been made to ensure the accuracy of the floorplan contained here, measurements of doors, windows, rooms and any other items are approximate and no responsibility is taken for any error, omission or mis-statement. This plan is for illustrative purposes only and should be used as such by any prospective purchaser. The services, systems and appliances shown have not been tested and no guarantee as to their operability or efficiency can be given.
Made with Metropix ©2024



IMPORTANT NOTICE Dourish & Day for themselves and for the vendor or lessors of this property whose agents they are given notice that: (i) the particulars are set out as a general outline only for the guidance of intending purchasers or lessees, and do not constitute, nor constitute part of, an offer of contract, (ii) all descriptions, dimensions, references to condition and necessary permissions for use and occupation, and other details are given in good faith and are believed to be correct but any intending purchasers or tenants should not rely on them as statement or representation of fact but must satisfy themselves by inspection or otherwise as to the correctness of each of them, (iii) no person in the employment of Dourish & Day has any authority to make or give any representation or warranty whatever in relation to this property.

You can reach us **9am to 9pm**, 7 days a week

14 Salter Street, Stafford, Staffordshire, ST16 2JU

01785 223344

hello@dourishandday.co.uk