



£385,000

🔑 TENURE: **Freehold**

📊 EPC RATING: **D**

💷 COUNCIL TAX BAND: **D**

Walton-on-the-Hill Stafford

Kitlings Lane Walton-on-the-Hill
Stafford Staffordshire



Situated in this highly regarded lane within the catchment area of the schools in Walton on the Hill, this superb home boasts well-presented and spacious room proportions on a good sized plot. This deceptively spacious three bedroom detached family home will certainly be popular as it really does tick all the boxes!

The accommodation comprises of an entrance hall, a spacious living room, kitchen/ dining room leading to the conservatory. A separate utility and guest WC completes the ground floor. Upstairs are three bedrooms and a shower room. Outside is that superb plot with plenty of parking on the drive and a garage with an integral door leading into the utility whilst there is well manicured gardens to the rear. Sitting in one of the best parts of town, this property really is a spectacular purchase, so don't miss out and book in your viewing today!

- Beautifully Presented Three Bedroom Detached House
- Living Room, Kitchen/Dining Room, Conservatory
- Ample Off-Road Parking With Garage
- Private Low Maintenance Rear Garden
- Popular Area, Near Schools
- A Short Drive To Stafford Town Centre & Cannock Chase

You can reach us **9am to 9pm**, 7 days a week

14 Salter Street, Stafford, Staffordshire, ST16 2JU

01785 223344

hello@dourishandday.co.uk



Entrance Hallway

Accessed through a double glazed composite entrance door having stairs off, rising to the First Floor Landing & accommodation, wood effect flooring, and radiator.

Living Room 12' 2" x 16' 2" (3.71m x 4.94m)

A spacious reception room featuring a cast-iron stove inset within the chimney breast on a tiled hearth with floating timber mantel over. There is feature ceiling coving, a radiator, and a double glazed bow window to the front elevation.

Kitchen 8' 10" x 19' 6" (2.70m x 5.95m)

An extremely well presented kitchen featuring a modern range of contemporary styled wall, base & drawer units with work surfaces over, extending to form a small breakfast bar area to one end, and incorporating an inset composite 1.5 bowl sink/drainers with chrome mixer tap, and a range of integrated/fitted appliances which include; single electric oven, electric induction hob with a stainless steel extractor hood over, dishwasher, a refrigerator & separate freezer. There is bevelled edge ceramic splashback tiling to the walls, inset ceiling spotlighting to the kitchen area with pendant lighting in the dining area, discreet under-cupboard lighting, wood effect flooring throughout, space to accommodate a dining table & chairs in the dining area which has double glazed bi-folding doors opening into the Conservatory. The kitchen also has a double glazed window to the rear elevation, and further internal door leading into the Utility Room, and a radiator.



You can reach us **9am to 9pm**, 7 days a week

14 Salter Street, Stafford, Staffordshire, ST16 2JU

01785 223344

hello@dourishandday.co.uk

Conservatory 9' 0" x 9' 3" (2.75m x 2.81m)

A brick based double glazed conservatory having double glazed windows and double glazed French doors providing great views and access out to the rear garden.

Utility Room 9' 8" x 8' 1" (2.94m x 2.46m)

A useful space having access off to the Guest WC, and integral door leading into the attached Garage.

Guest WC 2' 8" x 5' 0" (0.81m x 1.52m)

Fitted with a low-level WC, and a pedestal wash hand basin with chrome mixer tap. There is ceramic splashback tiling to the walls, and wood effect flooring.

First Floor Landing

Having a double glazed window to the side elevation, and internal doors off, providing access to all three Bedrooms & Shower Room.

Bedroom One 10' 8" x 9' 10" (3.26m x 2.99m)

A double bedroom having fitted bedroom furniture, radiator, and a double glazed window to the front elevation.

Bedroom Two 8' 2" x 12' 8" (2.48m x 3.85m)

A second double bedroom, again having fitted bedroom furniture, a radiator, and two double glazed windows to the rear elevation.

Bedroom Three 8' 5" x 6' 8" (2.57m x 2.03m)

Having an access hatch to the loft space, a radiator, and a double glazed window to the rear elevation.

Shower Room

Fitted with a white suite comprising of a double walk-in screened shower cubicle, a vanity style wash hand basin with chrome mixer tap over & storage beneath, and a low-level WC.

Outside Front

The property sits back from the Lane and is approached over a double width decorative brick paved driveway providing ample off-road parking, access to the attached single garage, and access to the main front entrance door. There is a mature hedging to the neighbouring borders, a variety of plants & shrubs, and access to the rear of the garden is provided by timber gated access to both sides of the property.

Garage 15' 9" x 8' 0" (4.80m x 2.45m)

A single attached garage having an up and over garage door to the front elevation, an internal pedestrian door leading to/from the Utility Room, a single glazed window to the side elevation, and benefitting from having both power & lighting installed.

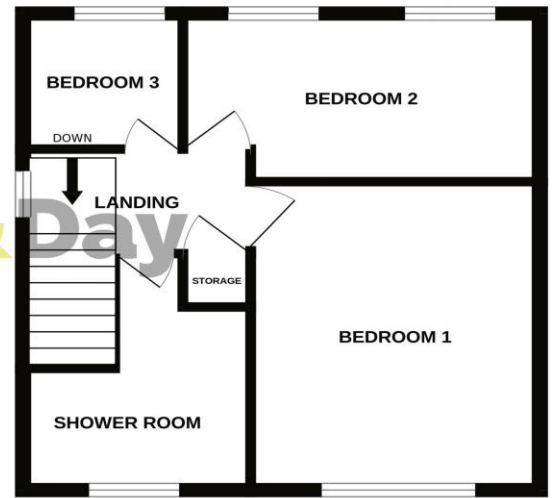
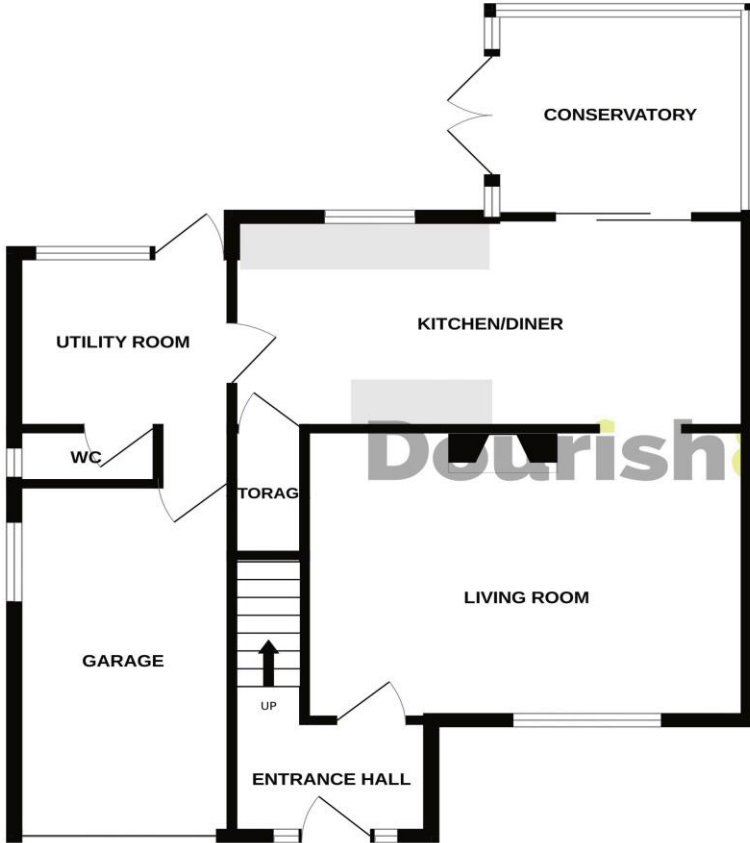
Outside Rear

An enclosed & private rear garden having a paved stone seating/outdoor entertaining area with a matching paved pathway leading through the centre of the garden with lawned garden areas to both sides of the pathway having a variety of mature plants & shrubs. To the far rear of the garden is a planting bed area and a greenhouse, and the garden is enclosed by panelled fencing.



GROUND FLOOR

1ST FLOOR



Energy Efficiency Rating		Current	Potential
Very energy efficient - lower running costs			
(92+)	A		81
(81-91)	B		
(69-80)	C		
(55-68)	D		
(39-54)	E		
(21-38)	F		
(1-20)	G		
Not energy efficient - higher running costs			
England & Wales			EU Directive 2002/91/EC

Whilst every attempt has been made to ensure the accuracy of the floorplan contained here, measurements of doors, windows, rooms and any other items are approximate and no responsibility is taken for any error, omission or mis-statement. This plan is for illustrative purposes only and should be used as such by any prospective purchaser. The services, systems and appliances shown have not been tested and no guarantee as to their operability or efficiency can be given.
Made with Metropix ©2024



IMPORTANT NOTICE Dourish & Day for themselves and for the vendor or lessors of this property whose agents they are given notice that: (i) the particulars are set out as a general outline only for the guidance of intending purchasers or lessees, and do not constitute, nor constitute part of, an offer of contract, (ii) all descriptions, dimensions, references to condition and necessary permissions for use and occupation, and other details are given in good faith and are believed to be correct but any intending purchasers or tenants should not rely on them as statement or representation of fact but must satisfy themselves by inspection or otherwise as to the correctness of each of them, (iii) no person in the employment of Dourish & Day has any authority to make or give any representation or warranty whatever in relation to this property.

You can reach us **9am to 9pm**, 7 days a week

14 Salter Street, Stafford, Staffordshire, ST16 2JU

01785 223344

hello@dourishandday.co.uk