



£650,000

KEY TENURE: **Freehold**

EPC RATING: **C**

COUNCIL TAX BAND: **E**

Coppenhall Stafford

Hyde Lea Bank Coppenhall
Stafford Staffordshire



Indulge in opulence at Mulberry House - a designer residence in Coppenhall.

This five-bedroom masterpiece boasts a grand entrance, living room with a stylish log burner, utility, and a spacious kitchen/dining room with a beautiful log burner and glazed sliding doors revealing picturesque rural views. The first-floor features four bedrooms with a master ensuite, a family bathroom, and an additional double bedroom in the attic with potential for another ensuite. External luxuries include a double-width driveway, a private rear garden with an Indian stone-paved seating area, a manicured lawn, and two garden sheds. The panoramic views are a masterpiece in themselves, ensuring that a glimpse of this house will captivate and enamour.

- A Beautiful Extended Detached Family Home
- Five Bedrooms with En-suite And Family Bathroom
- A Huge Extension Offering a Sitting/Kitchen/Diner
- Additional Attic Conversion Bedroom
- Driveway & Large Private Garden with Rural Views
- Located In the Sought After Village Of Hyde Lea

You can reach us **9am to 9pm**, 7 days a week

14 Salter Street, Stafford, Staffordshire, ST16 2JU

01785 223344

hello@dourishandday.co.uk



Entrance Hallway 22' 5" x 6' 1" (6.84m x 1.86m)

Being accessed through a glazed composite door and having two glazed windows, stairs rise to the first floor landing, tiled floor, and radiator.

Guest WC 3' 10" x 2' 8" (1.17m x 0.81m)

Having a suite comprising of a wash hand basin set within a vanity unit with chrome mixer tap and cupboard beneath and close coupled WC. Tiled floor and chrome towel radiator.

Living Room 16' 5" x 10' 2" (5.01m x 3.10m)

A spacious living room with the main feature of the room being the log burner which is set on an Indian slate base, radiator and double glazed window to the front elevation.



You can reach us **9am to 9pm**, 7 days a week

14 Salter Street, Stafford, Staffordshire, ST16 2JU

01785 223344

hello@dourishandday.co.uk

Open-Plan Kitchen/Dining/Sitting Room

26' 5" x 28' 0" (8.05m x 8.53m)

Without doubt, this fantastic room is the heart of this family home having a range of matching units extending to base and eye level with fitted work surfaces having an inset composite sink unit with chrome mixer taps. Range of integrated cooking appliances including a double oven, induction hob with a built-in extractor fan and located within the island. Integrated dishwasher, tiled floor and radiator. The dining area offers space for a dining table and chairs whilst the sitting room area has a feature log burning stove with a copper surround and glazed sliding doors providing views and access to the rear garden. In addition, there are three skylight windows.



Utility Room 17' 0" x 10' 1" (5.17m x 3.07m)

Having a range of matching units extending to base and eye level and fitted work surfaces with an inset one and a half bowl sink unit with chrome mixer tap. Integrated fridge freezer, bench seat, useful storage cupboard, coat hooks, tiled splashbacks, tiled floor, vertical radiator double glazed window to the front elevation and double glazed door to the side elevation.



First Floor Landing 25' 7" x 7' 3" (7.80m x 2.22m)

The spacious landing includes storage cupboards large double glazed window to the front elevation and stairs rising to the second floor bedroom four.

Bedroom One 13' 10" x 15' 1" (4.22m x 4.59m)

A spacious main bedroom having built-in wardrobes with hanging rails, radiator and double glazed window to the rear elevation.



En-suite (Bedroom One) 5' 1" x 6' 9" (1.56m x 2.07m)

Having a contemporary white suite which includes a double shower cubicle with fitted shower having a rainfall style showerhead and glazed screen, wash hand basin set within a vanity unit with a cupboard beneath and a close couple WC. Tiled floor, tiled walls chrome towel radiator, downlights and double glazed window to the rear elevation.

Bedroom Two 13' 10" x 10' 2" (4.22m x 3.11m)

A double bedroom having a built-in wardrobe which offers hanging rails and storage, radiator and double glazed window to the front elevation.

Bedroom Three 11' 7" x 10' 1" (3.52m x 3.08m)

A further double bedroom having a built-in wardrobe with hanging rail, radiator and double glazed window to the front elevation.





Bedroom Four 6' 4" x 9' 4" (1.94m x 2.85m)

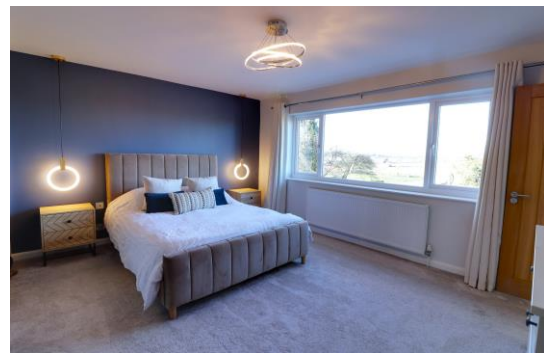
Having a radiator and a double glazed window to the rear elevation.

Bedroom Five 28' 11" x 8' 2" (8.81m x 2.50m)

This attic bedroom is accessed directly from the stairs rising off the first floor landing and is yet again another superb sized bedroom having a large storage cupboard which offers the potential to convert into an ensuite shower room. There is a further storage cupboard with hanging rails, useful under eaves storage, double glazed window to both side elevation.

Bathroom 9' 1" x 10' 1" (2.77m x 3.07m)

A superb, contemporary bathroom which is fitted with a white suite comprising of a freestanding bath with a freestanding tall chrome mixer tap with shower attachment, separate shower cubicle with fitted shower having a rainfall style shower head and glazed screen, wash hand basin set within a vanity unit having chrome mixer taps and a close coupled WC. Part tiled walls, led mirror, tiled floor, towel radiator and double glazed window to the side elevation.



You can reach us **9am to 9pm**, 7 days a week

14 Salter Street, Stafford, Staffordshire, ST16 2JU

01785 223344

hello@dourishandday.co.uk

Outside - Front

The property is approached over a double width gravelled drive which provide ample off-road parking with hedging and gated side access leads to:

Outside - Rear

Being accessed through the side gate, the large rear garden includes an Indian stone paved patio overlooking the remainder of the garden which is mainly laid to lawn with two garden sheds. There is a decorative gravelled area and the garden enjoys superb rural views over adjoining farmland.



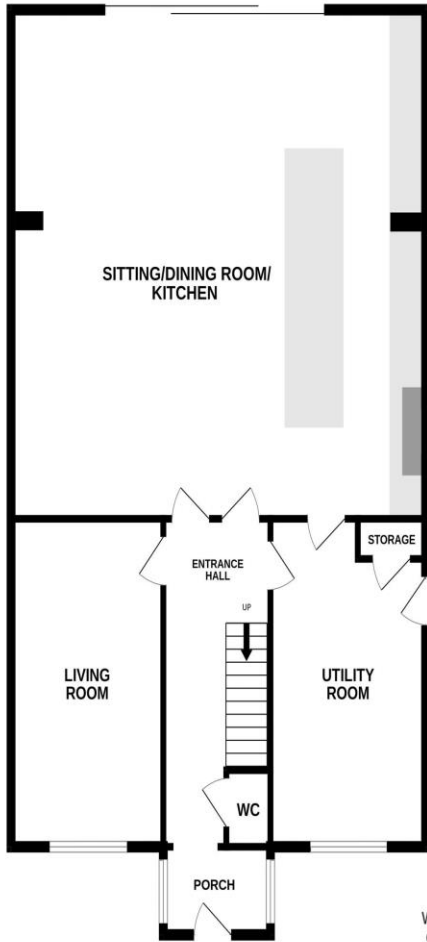
You can reach us **9am to 9pm**, 7 days a week

14 Salter Street, Stafford, Staffordshire, ST16 2JU

01785 223344

hello@dourishandday.co.uk

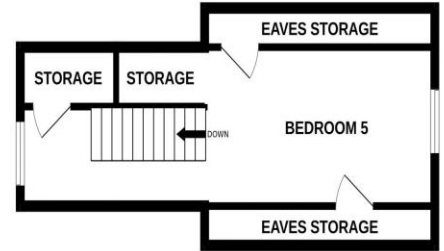
GROUND FLOOR



1ST FLOOR



2ND FLOOR



Whilst every attempt has been made to ensure the accuracy of the floorplan contained here, measurements of doors, windows, rooms and any other items are approximate and no responsibility is taken for any error, omission or mis-statement. This plan is for illustrative purposes only and should be used as such by any prospective purchaser. The services, systems and appliances shown have not been tested and no guarantee as to their operability or efficiency can be given.

Made with Metropix ©2024

Energy Efficiency Rating		Current	Potential
92-100	A		
81-91	B		
69-80	C		
55-68	D		
39-54	E		
21-38	F		
1-20	G		
<small>Best energy efficient - higher rating costs less</small>		71	81
<small>EU Directive 2002/91/EC</small>		<small>www.EPC4U.COM</small>	



IMPORTANT NOTICE Dourish & Day for themselves and for the vendor or lessors of this property whose agents they are given notice that: (i) the particulars are set out as a general outline only for the guidance of intending purchasers or lessees, and do not constitute, nor constitute part of, an offer of contract, (ii) all descriptions, dimensions, references to condition and necessary permissions for use and occupation, and other details are given in good faith and are believed to be correct but any intending purchasers or tenants should not rely on them as statement or representation of fact but must satisfy themselves by inspection or otherwise as to the correctness of each of them, (iii) no person in the employment of Dourish & Day has any authority to make or give any representation or warranty whatever in relation to this property.

You can reach us **9am to 9pm, 7 days a week**

14 Salter Street, Stafford, Staffordshire, ST16 2JU

01785 223344

hello@dourishandday.co.uk