



£500,000

🔑 TENURE: Freehold

📊 EPC RATING: D

💷 COUNCIL TAX BAND: E

Acton Trussell Stafford

Moathouse Close Acton Trussell
Stafford Staffordshire



There's nothing more relaxing than looking out of your window onto the tranquil canal side and that is what we can offer you with this spacious detached family house. Located in the very desirable Acton Trussell towards the head of a private road servicing just a few homes and offered with NO CHAIN.

The family sized home comprises entrance hall with guest WC off, three reception rooms including lounge, dining room and study and fitted kitchen with built in cooking facilities. Upstairs there are four generous sized bedrooms, each with wardrobes, en-suite shower room to the master bedroom and family bathroom. Outside there is a double width driveway to the detached double garage providing ample parking and an enclosed rear garden with patios and lawn. This is a great family home in a fantastic location so don't miss the opportunity and book your viewing.

- Detached Four Bedroom Detached House
- Canalside Location IN Desirable Village
- Three Reception Rooms & Fitted Kitchen
- En-Suite, Family Bathroom & Guest WC
- Detached Double Garage
- No Onward Chain

You can reach us **9am to 9pm**, 7 days a week

14 Salter Street, Stafford, Staffordshire, ST16 2JU

01785 223344

hello@dourishandday.co.uk



Entrance Hallway

Approached through a partial glazed, double glazed front entrance door and leading through into the hallway, which has coving to the ceiling, staircase off, rising to the First Floor Landing & accommodation, radiator, and internal door(s) off, providing access to;

Guest WC

Fitted with a low-level WC, and a vanity style wash hand basin. There is part-ceramic tiling to the walls, ceramic tiled flooring, a towel radiator, and a double glazed window to the front elevation.

Living Room 12' 3" x 12' 0" (3.74m x 3.65m) (increasing to 5.03m width)

Having an exposed brick fireplace incorporating a coal effect living flame gas fire set on a tiled hearth. There is coving to the ceiling, internal glazed double doors leading through into the Dining Room, a double glazed window to the front elevation, and a radiator.

Dining Room 9' 1" x 12' 3" (2.76m x 3.74m)

Having patio doors providing views of, and access out to the rear garden, coving to the ceiling, and a radiator.

Study 9' 9" x 5' 10" (2.98m x 1.79m)

A dual aspect room which has double glazed windows to both the front & side elevations, and a radiator.



You can reach us **9am to 9pm**, 7 days a week

14 Salter Street, Stafford, Staffordshire, ST16 2JU

01785 223344

hello@dourishandday.co.uk

Kitchen 15' 7" x 12' 5" (4.75m x 3.78m)

Fitted with a matching range of wall, base & drawer units with work surfaces over to three sides, and incorporating an inset single drainer sink with mixer tap, and appliances which include; 4-ring gas hob with cooker hood above, electric double oven/grill, and eye-level integrated microwave, with spaces available to accommodate further kitchen appliances. There is ceramic splashback tiling to the walls, ceramic tiled flooring, half-glazed double glazed door to the side elevation, and a double glazed window to the rear elevation.

First Floor Landing

Having an access point to the loft space, ceiling coving, a built-in cupboard, and internal door(s) off, providing access to;

Bedroom One 12' 8" x 9' 9" (3.85m x 2.97m)

A double bedroom fitted with a range of bedroom furniture, and having a double glazed window to the front elevation, radiator, and further internal door leading through into the En-suite.

En-suite (Bedroom One) 6' 0" x 5' 6" (1.84m x 1.67m)

Fitted with a suite comprising of a low-level WC with concealed cistern, a vanity style wash hand basin with chrome mixer tap & storage beneath, and a corner tiled shower cubicle housing an electric shower. In addition, there is ceramic tiling to both the walls, and floor, a double glazed window to the front elevation, and a towel radiator.

Bedroom Two 12' 8" x 9' 4" (3.85m x 2.84m)

A second double bedroom, having built-in wardrobes with sliding mirrored door fronts, a double glazed window to the front elevation, and a radiator.

Bedroom Three 8' 6" x 8' 9" (2.6m x 2.67m)

Having fitted wardrobes, a double glazed window to the front elevation, and a radiator.

Bedroom Four 7' 8" x 8' 8" (2.34m x 2.64m)

A fourth bedroom, again having fitted wardrobes, a double glazed window to the rear elevation, and a radiator.

Bathroom 5' 5" x 8' 11" (1.66m x 2.71m)

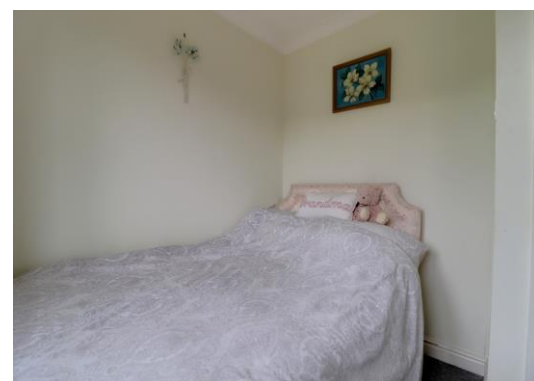
Fitted with a low-level WC with concealed cistern, a corner wash hand basin with chrome mixer tap, and a P-shaped panelled bath with shower screen & electric shower above. In addition, there is ceramic tiling to both the walls & floor, a double glazed window to the rear elevation, and a towel radiator.

Externally

The property is positioned alongside a Canalside fronted approach over a double width driveway providing ample off-street parking and access to the Garage with a paved pathway off providing access to the front entrance having a lawned garden to the front & pedestrian access gate to the side which leads to the enclosed rear garden which has a paved patio seating/outdoor entertaining area which leads onto a lawned garden & corner flowerbed. There is a gated storage area to the rear of the garage.

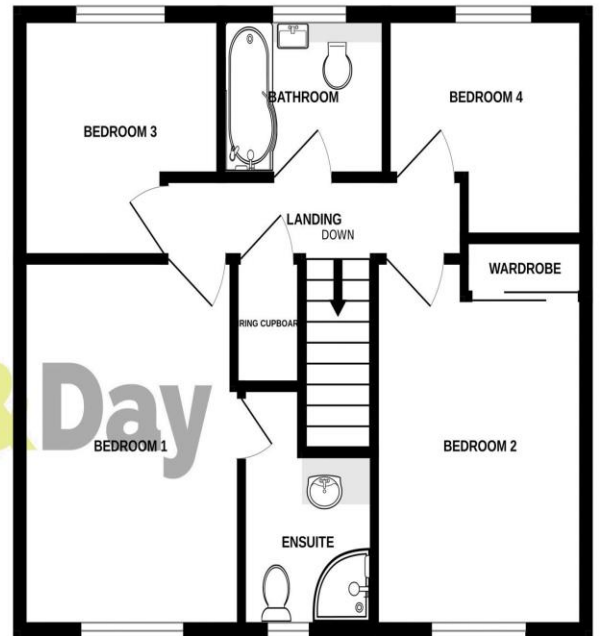
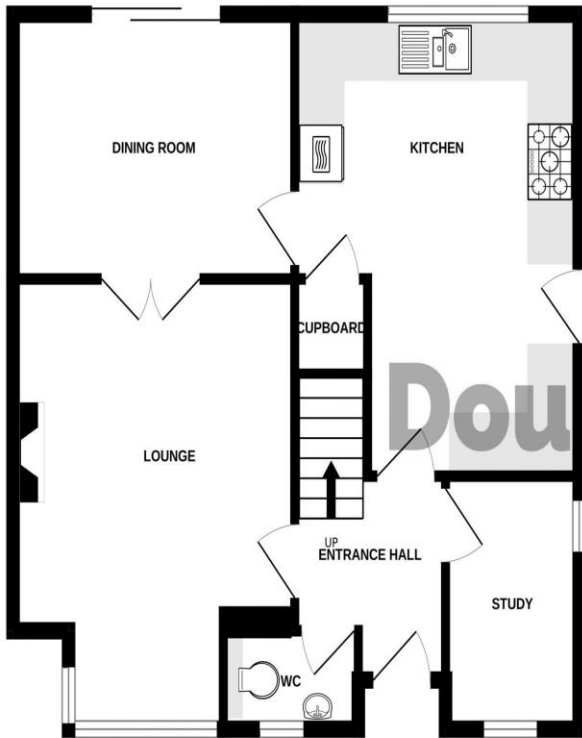
Double Detached Garage 16' 5" x 16' 10" (5.01m x 5.14m)

A brick & pitched tiled roof double garage which has two electronically operated up and over vehicle access doors to the front elevation, a double glazed pedestrian access door to the side elevation providing access to/from the garden, and the garage also benefits from having both power & lighting installed.



GROUND FLOOR

1ST FLOOR



Whilst every attempt has been made to ensure the accuracy of the floorplan contained here, measurements of doors, windows, rooms and any other items are approximate and no responsibility is taken for any error, omission or mis-statement. This plan is for illustrative purposes only and should be used as such by any prospective purchaser. The services, systems and appliances shown have not been tested and no guarantee as to their operability or efficiency can be given.
Made with Metropix ©2023

| Energy Efficiency Rating | | Current | Potential |
|---|---|---------|-----------|
| Very energy efficient - lower running costs | | | |
| (92+) | A | | |
| (81-91) | B | | |
| (69-80) | C | | |
| (55-68) | D | | |
| (39-54) | E | | |
| (21-38) | F | | |
| (1-20) | G | | |
| Not energy efficient - higher running costs | | | |
| | | 86 | 80 |

England & Wales EU Directive 2002/91/EC
www.epcrea.com



IMPORTANT NOTICE Dourish & Day for themselves and for the vendor or lessors of this property whose agents they are given notice that: (i) the particulars are set out as a general outline only for the guidance of intending purchasers or lessees, and do not constitute, nor constitute part of, an offer of contract, (ii) all descriptions, dimensions, references to condition and necessary permissions for use and occupation, and other details are given in good faith and are believed to be correct but any intending purchasers or tenants should not rely on them as statement or representation of fact but must satisfy themselves by inspection or otherwise as to the correctness of each of them, (iii) no person in the employment of Dourish & Day has any authority to make or give any representation or warranty whatever in relation to this property.

You can reach us **9am to 9pm, 7 days a week**

14 Salter Street, Stafford, Staffordshire, ST16 2JU

01785 223344

hello@dourishandday.co.uk