



19 VALE ROAD | TIMPERLEY

£499,950

An immaculate extended family home in a popular residential location within walking distance of Timperley village centre. The accommodation briefly comprises entrance hall, front sitting room, superb open plan living dining kitchen with doors onto the rear garden, cloakroom/WC, three bedrooms and modern family bathroom/WC. To the front of the property the driveway provides off road parking and access to the attached garage with remote up and over doors to the front and rear. There is also gated access to the rear. To the rear is a patio seating area with delightful lawned gardens beyond. Viewing is essential to appreciate the standard of accommodation on offer.

POSTCODE: WA15 7TQ

DESCRIPTION

A traditional semi detached family home in a sought after residential location which has been extended and modernised throughout to create a superb open plan living space that needs to be seen to be appreciated.

The accommodation is approached via a welcoming entrance hall which leads onto the front sitting room. To the rear there is an impressive open plan living dining kitchen with double doors to the side and rear and with a full range of quality integrated appliances. Cloakroom/WC. To the first floor there are three bedrooms and the accommodation is completed by the bathroom/WC.

To the front of the property the driveway provides off road parking and there is gated access to the side. The drive also leads to the attached garage with remote doors to the front and rear and with light, power and water feed. To the rear is a flagged patio seating area with delightful lawned gardens beyond.

The location is ideal being within the catchment area of highly regarded primary and secondary schools and also within walking distance of Timperley village centre and with Altrincham town centre a little further distant.

A superb family home and viewing is essential to appreciate the accommodation on offer.

ACCOMMODATION

GROUND FLOOR

ENTRANCE HALL

PVCu double glazed front door. Natural wood flooring. Radiator. Spindle balustrade staircase to first floor.

SITTING ROOM

12'1" x 11'5" (3.68m x 3.48m)

With a focal point of a living flame gas fire. PVCu double glazed bay window to the front. Radiator. Television aerial point. Picture rail.

CLOAKROOM

With WC and vanity wash basin. Tiled splashback, Recessed low voltage lighting. Extractor fan. Laminate flooring.

OPEN PLAN LIVING DINING KITCHEN COMPRISING

LIVING ROOM

17'4" x 13'6" (5.28m x 4.11m)

Running the full width and with a focal point of a living flame gas fire with stone effect surround and hearth. PVCu double glazed double doors to the side. Natural wood flooring. Radiator. Opening to:

DINING KITCHEN

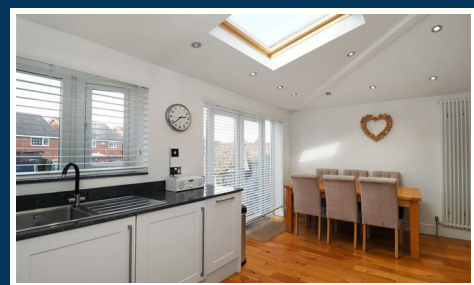
17'3" x 10'2" (5.26m x 3.10m)

Fitted with a comprehensive range of white wall and base units with work surfaces over incorporating stainless steel sink unit with drainer. Integrated oven/grill plus 4 ring gas hob with stainless steel extractor hood. Integrated fridge freezer, dishwasher and washing machine. Radiator. Natural wood flooring. Recessed low voltage lighting. Velux window to the rear. PVCu double glazed window overlooking the rear garden. PVCu double glazed double doors provide access to the rear garden.

FIRST FLOOR

LANDING

Opaque PVCu double glazed window to the side. Loft access hatch.



BEDROOM 1

13'1" x 10'11" (3.99m x 3.33m)

with PVCu double glazed window overlooking the rear garden. Fitted wardrobes. Radiator.

BEDROOM 2

12'8" x 10'11" (3.86m x 3.33m)

PVCu double glazed bay window to the front. Fitted wardrobes. Radiator.

BEDROOM 3

6'9" x 6'2" (2.06m x 1.88m)

PVCu double glazed window to the front. Radiator.

BATHROOM

9'6" x 6'0" (2.90m x 1.83m)

Fitted with a white suite with chrome fittings comprising panelled bath with mains shower over, WC and wash hand basin. Chrome heated towel rail. Tiled walls. Recessed low voltage lighting. Extractor fan. Opaque PVCu double glazed window to the rear.

OUTSIDE

To the front of the property the driveway provides off road parking and there is gated access to the side and access to the garage.

To the rear is a flagged patio seating area with delightful lawned gardens beyond with fence borders. External water feed.

GARAGE

With remote doors to the front and rear. Automatic lighting. Light and power and water feed. Wall mounted Worcester combination gas central heating boiler.

SERVICES

All main services are connected.

POSSESSION

Vacant possession upon completion.

COUNCIL TAX

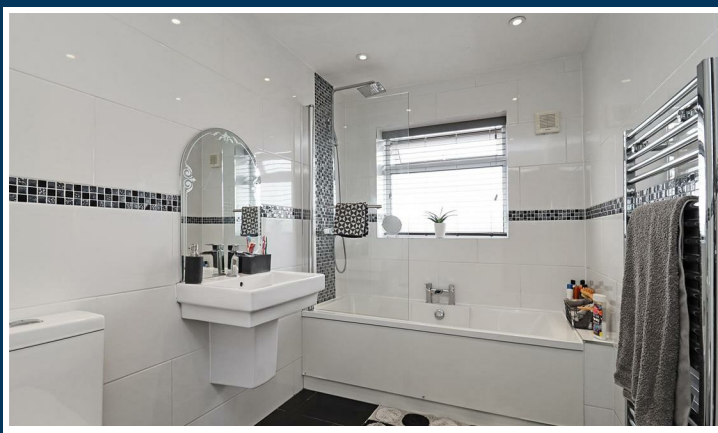
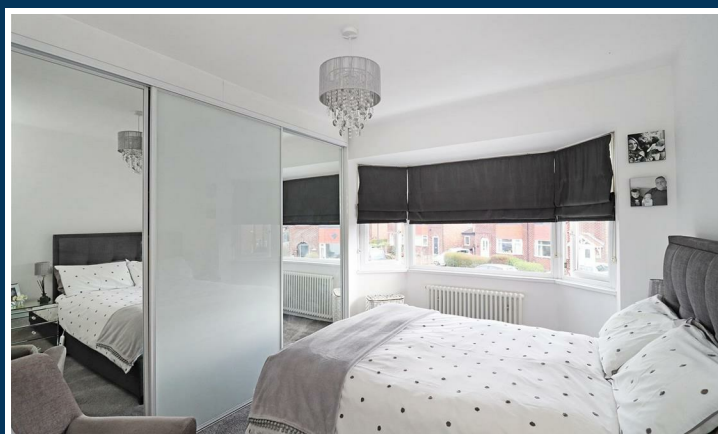
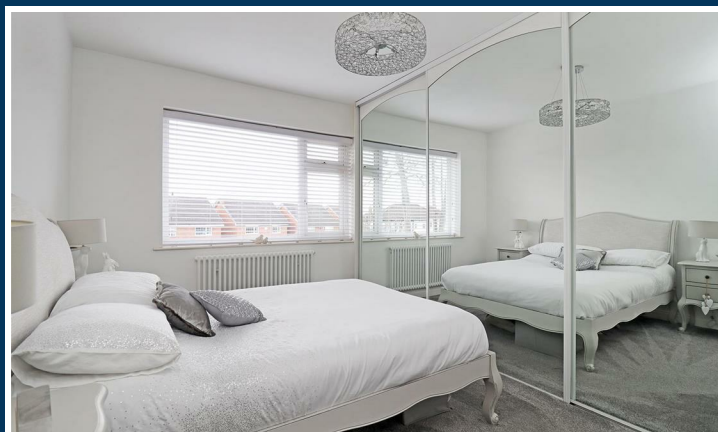
Band "C"

TENURE:

We are informed the property is Freehold. This should be verified by your Solicitor.

NOTE

No appliances, fixtures and fittings have been inspected and purchasers are recommended to obtain their own independent advice.



Ian Macklin & Co, for themselves and the vendors or lessors of this property whose agents they are, give notice that (i) the particulars are set out as a general outline only for the guidance of intending purchasers, and do not constitute, nor constitute part of, an offer or contract; (ii) all descriptions, dimensions, references to condition and necessary permission for use and occupation, and other details are given without responsibility and any intending purchasers should not rely on them as statements or representations of the fact but must satisfy themselves by inspection or otherwise as to the correctness of each item; (iii) no person in the employment of Ian Macklin & Co has any authority to make or give any representations or warranty whatsoever in relation to this property.

GROUND FLOOR

APPROX. 55.8 SQ. METRES (600.2 SQ. FEET)



FIRST FLOOR

APPROX. 38.8 SQ. METRES (417.3 SQ. FEET)



TOTAL AREA: APPROX. 94.5 SQ. METRES (1017.4 SQ. FEET)

Floorplans For Illustrative Purposes Only



HALE BARNs

292 HALE ROAD, HALE BARNs
CHESHIRE, WA15 8SP

T: 0161 980 8011

E: HALEBARNs@IANMACKLIN.COM

HALE

OLD BANK BUILDINGS, 160 ASHLEY ROAD
HALE, CHESHIRE, WA15 9SF

T: 0161 928 9510

E: HALE@IANMACKLIN.COM

TIMPERLEY

385 STOCKPORT ROAD, TIMPERLEY
CHESHIRE, WA15 7UR

T: 0161 904 0654

E: TIMPERLEY@IANMACKLIN.COM