

Hyman
Estate & Letting



Hill
Agent



60 Greenways Crescent, Shoreham-by-Sea, West Sussex, BN43 6HS

60 Greenways Crescent, Shoreham-by-Sea, BN43 6HS

£550,000 - Freehold

“

An extended three / four bedroom family home with private drive to garage ”

Hyman Hill is delighted to offer for sale this very well presented THREE / FOUR-bedroom EXTENDED end of terrace family home located in a highly popular NORTH SHOREHAM location.

The property has a single-story extension to the rear offering a large, fitted kitchen and lounge diner with study area. Also, on the ground floor there is a sitting room which could also be used as a fourth bedroom and cloakroom. The first floor has three bedrooms and family bathroom.

There outside comprises of a large lawned rear garden with side access to front, PRIVATE DRIVE TO GARAGE and block paved off road parking.

We highly recommend undertaking an internal viewing.

Shoreham-by-Sea is a charming, historic town, 7 miles west of Brighton and 6 miles east of Worthing. The town centre is vibrant offering lots of independent and corporate shops, cafes, pubs and restaurants. The Holmbush Shopping Centre can be found close by providing a large M&S, Next and Tesco.

There is excellent access to the east/west A27 & M23 and public transport services including Shoreham-by-Sea mainline railway station is only a short walk away offering direct trains to Brighton, London and to the west.

The property is in catchment of Primary & Secondary schools, including popular Shoreham Academy with its 'Outstanding' Ofsted rating.

Shoreham by Sea also benefits from a highly popular Beach, South Downs National Park and River Adur affording fantastic water sports and walking opportunities.

-
- Extended family home
 - Three bedrooms
 - Extended lounge dining room
 - Extended kitchen
 - Ground floor cloakroom
 - Sitting room / Bedroom 4
 - Large rear garden
 - Private drive to garage plus off road parking



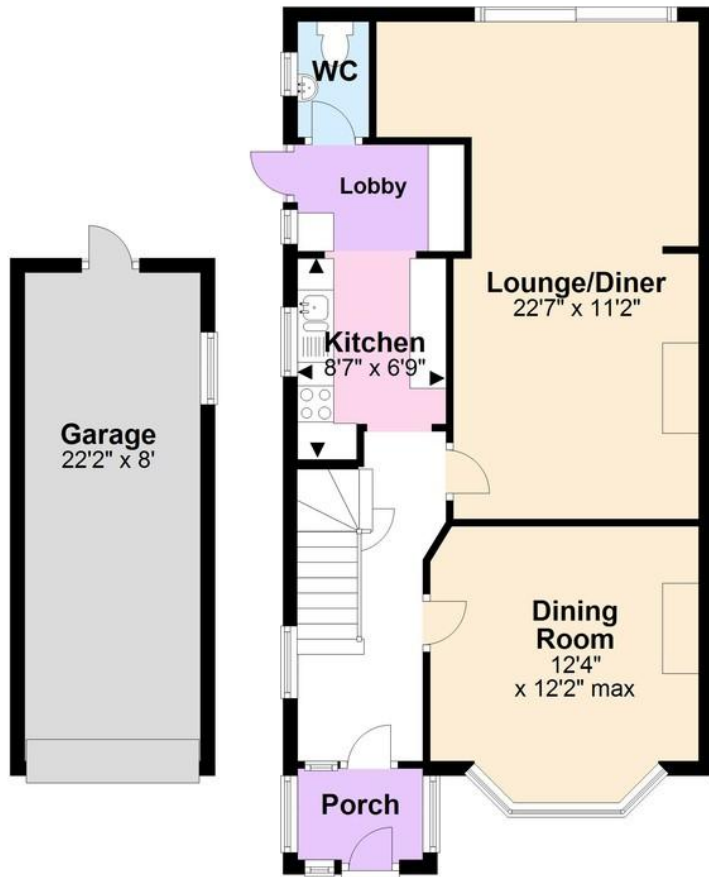








Ground Floor



First Floor



Total area: approx. 1202.9 sq. feet

For illustrative purposes only. Not to scale.
Plan produced using PlanUp.

Score	Energy rating	Current	Potential
92+	A		
81-91	B		81 B
69-80	C		
55-68	D	66 D	
39-54	E		
21-38	F		
1-20	G		

Useful Information

Council Tax Band: D - £2,310.40 per annum (2023/2024)

Tenure: Freehold

Local Authority: Adur District Council



To book a viewing, or a valuation of your own property, get in touch with one of our experts.

Southwick – 01273 597730
info@hymanhill.co.uk

Shoreham – 01273 454511
shoreham@hymanhill.co.uk

Lettings – 01273 597730
lettings@hymanhill.co.uk

www.hymanhill.co.uk