



Flat 2, Longshaw Hazelwood Lane, Chipstead
£750,000 LEASEHOLD

ShineRocks
PROPERTY AGENTS

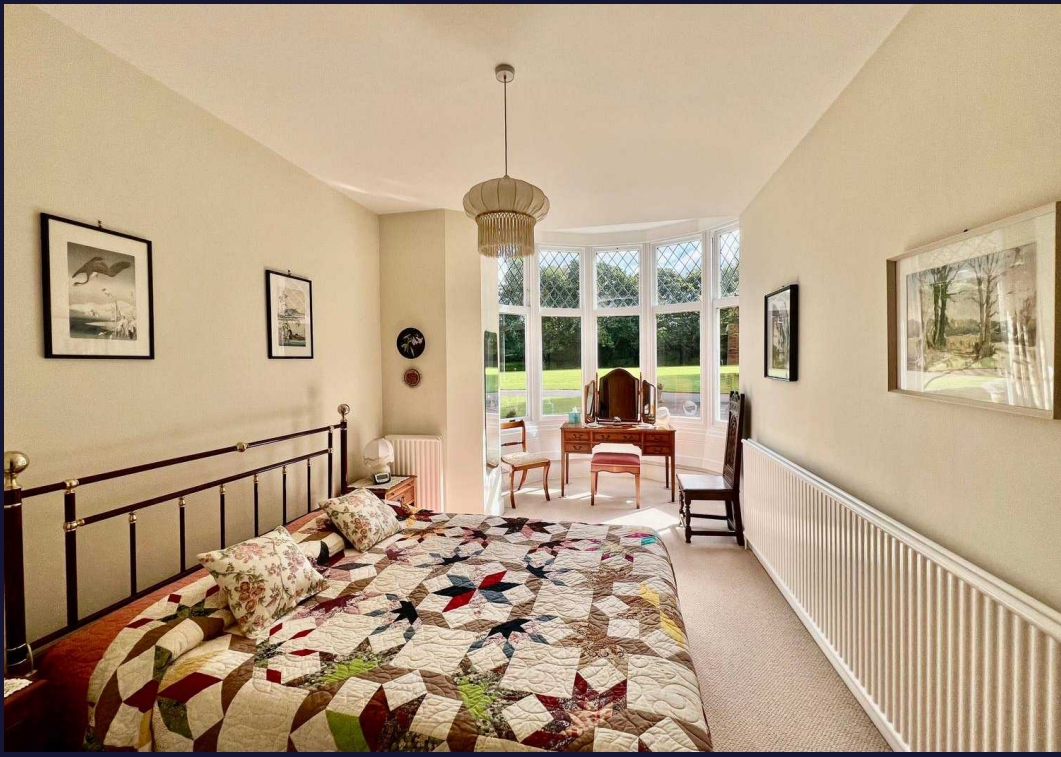
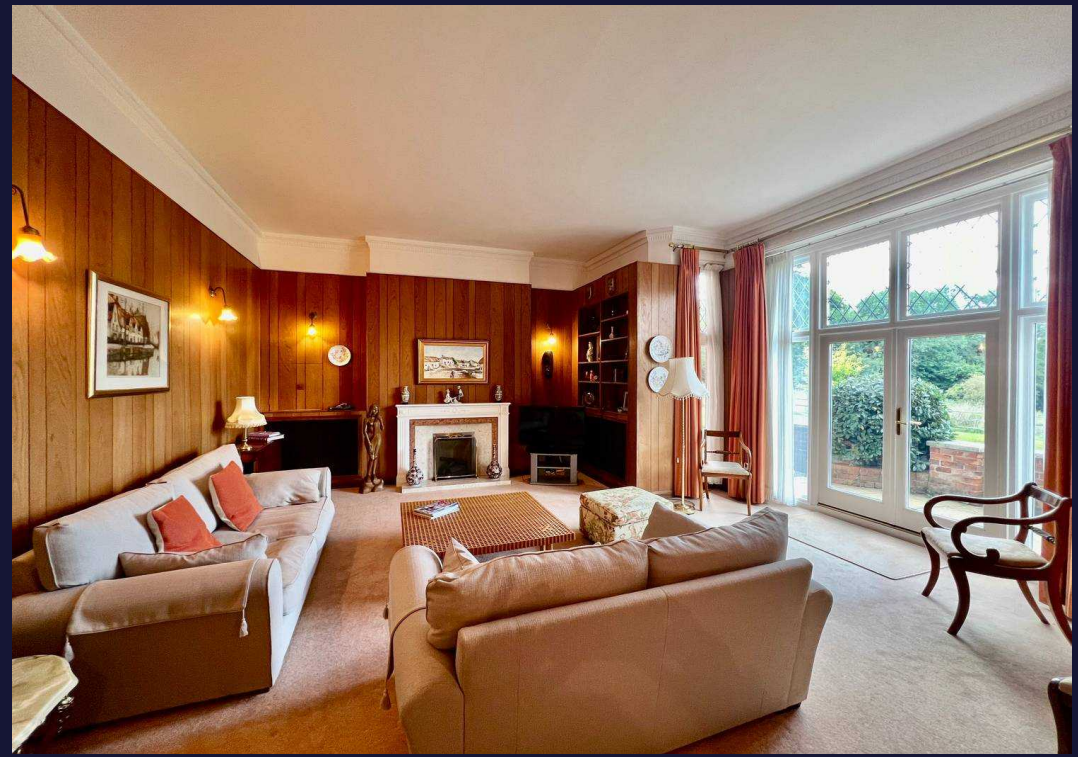
Flat 2

Longshaw Hazelwood Lane, Chipstead

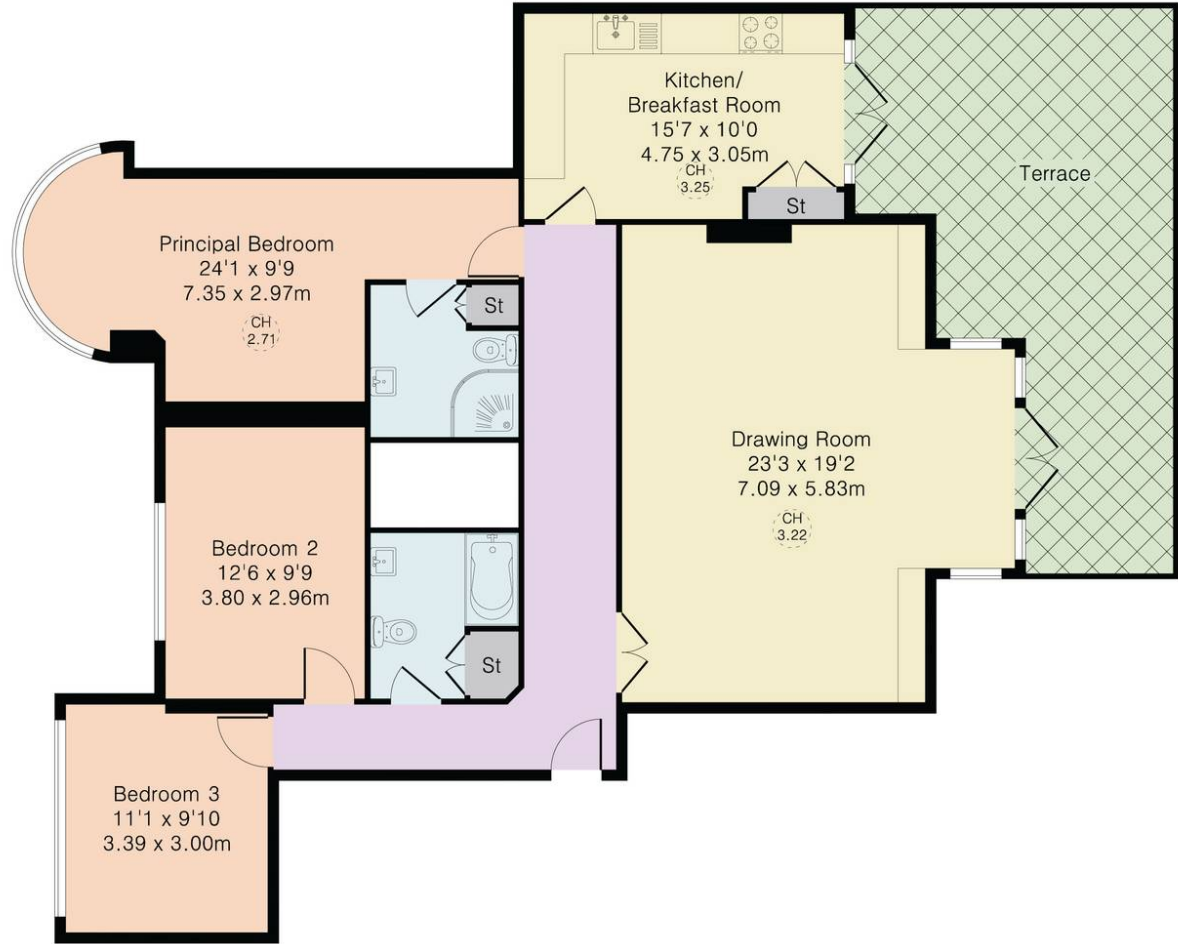
Simply stunning, BUILT IN 1888, Longshaw was once one of the main Victorian estates in Chipstead, the residence of G.H. Bravington, Chairman of Bravingtons, the jewellery retailer. In 1978. the house was converted into 8 apartments, while at the same time, the stable block was converted into the Chipstead Courtyard theatre. Flat 2, is the jewel in the crown, the largest of the main house apartments, comprising three double bedrooms, two bathrooms, an eat-in kitchen/diner and a beautifully formed drawing room, both with French doors to it's own private West facing terrace with far reaching countryside views. The apartment has its own garage en-bloc. Leasehold with 143 years remaining. Peppercorn Ground Rent. Service charge approximately £3,000 P/A (varying from year to year).

- LONGSHAW, A STUNNING VICTORIAN PROPERTY BUILT IN 1888
- THREE DOUBLE BEDROOM GROUND FLOOR APARTMENT
- TWO BATH/SHOWER ROOMS
- EAT IN KITCHEN/DINER & IMPRESSIVE DRAWING ROOM BOTH WITH FRENCH DOORS TO PRIVATE WEST FACING TERRACE
- GARAGE EN-BLOC
- SURROUNDED BY BEAUTIFUL GROUNDS WITH UNINTERRUPTED COUNTRYSIDE VIEWS
- LEASEHOLD WITH 143 YEARS REMAINING. PEPPERCORN GROUND RENT. SERVICE CHARGE: APPROX £3,000 P/A. EPC - D. COUNCIL TAX - E.





Approximate Gross Internal Area 1259 sq ft - 117 sq m



ShineRocks Estate Agents

ShineRocks Property Agents, 4 Russell Parade, Russell Hill Road - CR8 2LE

020 8660 2010

enquiries@shinerocks.co.uk

www.shinerocks.co.uk

ShineRocks
PROPERTY AGENTS

For clarification purposes, we wish to inform prospective purchasers that these details have been prepared as a general guide only. We have not carried out a detailed survey, nor tested the services, appliances and specific fittings. Room sizes are approximate and generally to maximum dimensions and should not be relied upon for carpets or furnishings. Whilst every attempt has been made to ensure the accuracy of the floor plan contained herein, measurements of doors, windows and room sizes are approximate and no responsibility is taken for any error, omission or mis-statement. This plan is for illustration purposes only and should only be used as such.